

User manual

Data collection & analysis software
DOGANet



EN

60521-06/26

CONTENTS

Revision history	3
Symbols	3
1 INFORMATION	4
1.1 Summary	4
1.2 Product reference	4
1.3 Download	4
2 INSTALLATION	5
2.1 Requirements	5
2.2 How to install	5
2.2.1 Install .NET Framework 4.8	5
2.2.2 Install Npgsql 4.1.8	6
2.2.3 Install DOGANet	7
2.2.4 Run DOGANet and initialize the database	8
2.2.5 Uninstall DOGANet	9
3 LICENSE	10
3.1 Licence activation : USB dongle	10
3.2 Licence activation : registration Key	11
3.2.1 License activation for online users (only if DOGANet computer is connected to Internet)	11
3.2.2 License activation for offline users (if DOGANet computer is NOT connected to Internet)	12
4 SETTINGS THE NETWORK	13
4.1 Setting the network of server PCs with DOGANet installed	13
4.2 Network settings for tools that connect directly with DOGANet	14
4.3 Network settings when connecting with ParaMon-Pro X	14
4.4 Firewall settings	15
5 MAIN MENU	16
5.1 Overview	17
5.1.1 Tool status	17
5.1.2 System logs	18
5.1.3 Event status	19
5.2 Report	20
5.2.1 Search options	21
5.2.2 Search result	22
5.3 Tools (Tool manager)	25
5.3.1 Tool information	26
5.3.2 Settings	27
5.3.3 Change system password	27
5.3.4 Set server settings	28
5.3.5 Set monitoring data type	28
5.3.6 Database Backup & Restore	28
5.3.7 Automatic backup	29
5.3.8 License information	29
6 SUPPORT	30
6.1 Troubleshooting	30
6.2 Hotline	30

REMARKS ABOUT THE MANUAL

Revision history

Version	Date	Description	Author
1.0	2023-02-13	Release documents	Jerry. Kim
1.1	2026-06-09	Update licence activation and network firewall setting	JF Chèze

Symbols



Information

This warning statement indicates important information (for example: damage to property), but no hazard.



Information

Information to view in your customer area on the www.doga.fr web site.



Caution

This warning statement indicates a low risk that may lead to minor or moderate injuries if not avoided.



Wear personal protection equipment.

This symbol indicates the need to wear protective gloves.



Warning

This warning statement indicates a moderate risk that may lead to severe or fatal injuries if not avoided.

1 INFORMATION

1.1 Summary

DOGANet is PC software that collects event data from several tools used in the manufacturing process. The software prevents event data collected from multiple tools from being lost or deformed and collects data quickly. The collected event data can be searched under multiple conditions, and various information is provided through the retrieved data.

Main features:

- Tool connectivity and data collection capabilities.
- Connectivity and data collection capabilities with the task control management device ParaMon-Pro X
- Managing collection data through a database (PostgreSQL)
- Analysis and view of collected data
- System logs

1.2 Product reference

Description	Windows PC software for collecting and analyzing assembly data.
Type	DOGANet software- called v1.xx.x
Compatibility	MDCv2, MDTC, BM, BMT, ParaMon-Pro X screwdrivers and controllers with minimum tool&controller FW version v4.0.9 & v4.2.1 for Pro X

1.3 Download

The **DOGANet** software is available for downloading from the DOGA website. You can download it from any compatible tool's page by selecting "Resources" at the top of the list.

To use the DOGANet software, you must have an activation key that must be permanently installed on a USB port; otherwise, the application will automatically close after 10 minutes.

2 INSTALLATION

2.1 Requirements

	Minimum	Recommend
OS	Windows 8 / 10 / 11 Windows Server 2012 / 2016 / 2022	
CPU	Intel® Core™ i5-6600	Intel® Core™ i7-9700
MEMORY	8GB RAM	
HDD/SDD	At least 500MB of free space	
Requirement	.NET Framework 4.8 Npgsql 4.1.8	

2.2 How to install

2.2.1 Install .NET Framework 4.8

If you are using **Windows 11** or **Windows server 2022**, you do not need to proceed with this step because **.NET Framework 4.8** is installed as the default specification.

- **When Internet is available**
If you run “**setup.exe**” among **DOGANet**’s installation files, you can check if **.NET Framework 4.8** is installed before **DOGANet** installation, and if not, you can automatically download and install **.NET Framework 4.8** over the Internet.
- **When internet is not available**
You can download the **Offline installer**¹ or find and download the **Offline installer (Runtime)** from site².

For a detailed installation guide for **.NET Framework 4.8**, see the Microsoft **.NET Framework Installation Guide**³.

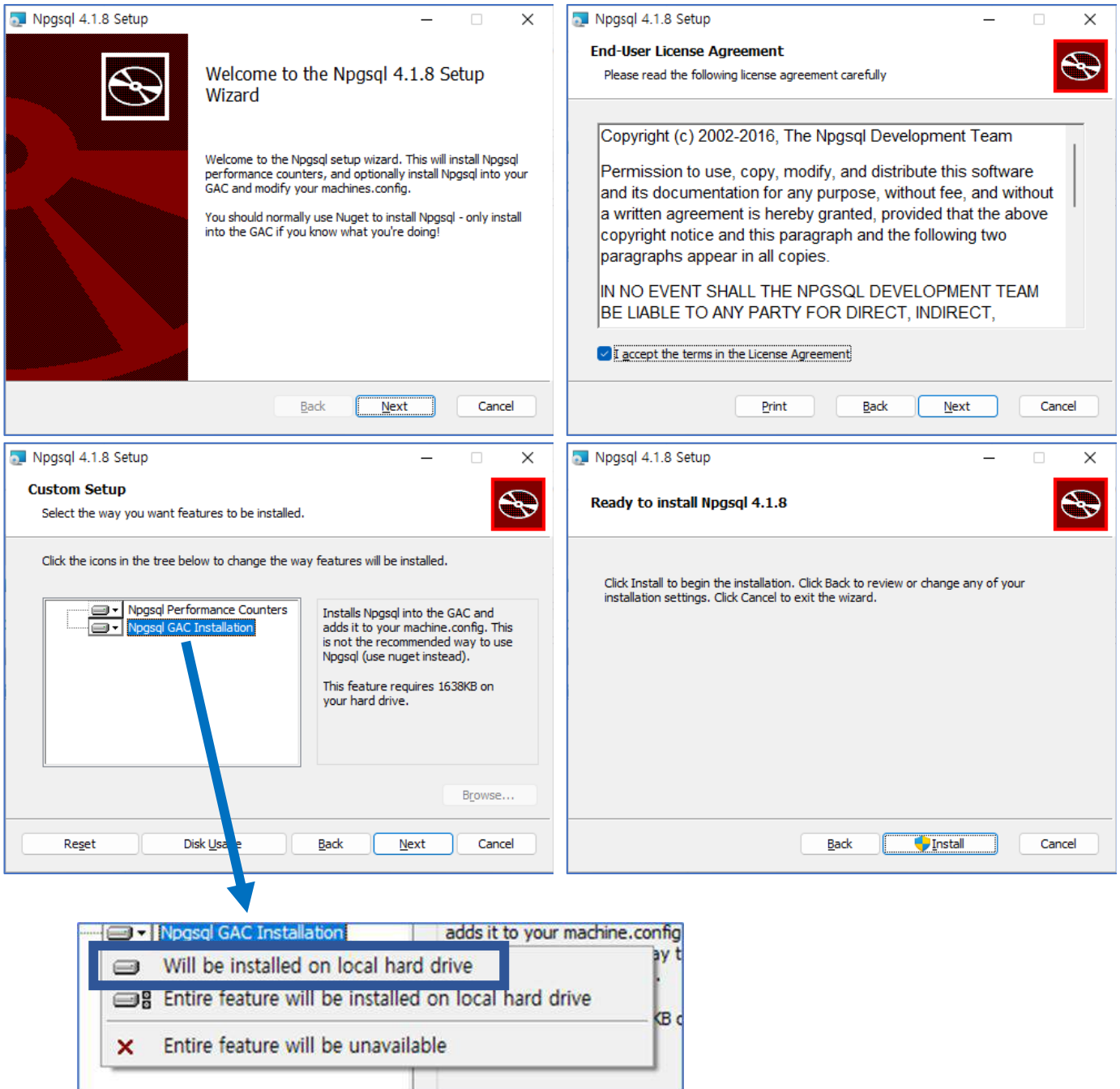
¹ <https://go.microsoft.com/fwlink/?linkid=2088631>

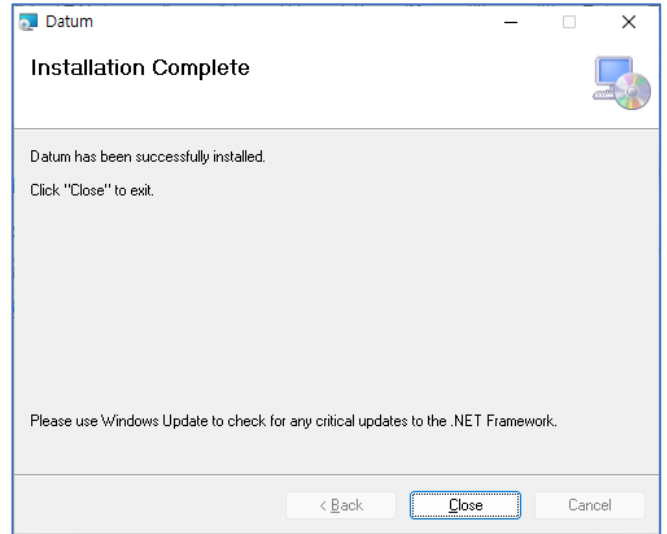
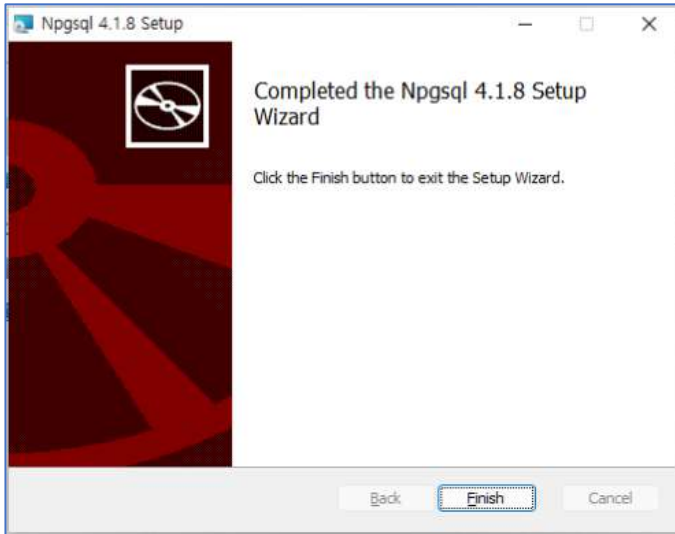
² <https://dotnet.microsoft.com/en-us/download/dotnet-framework/net48>

³ [.NET Framework installation guide - .NET Framework | Microsoft Learn](#)

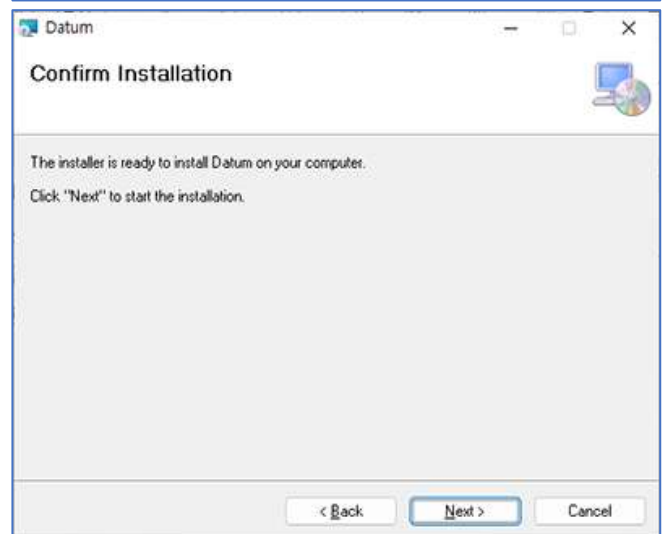
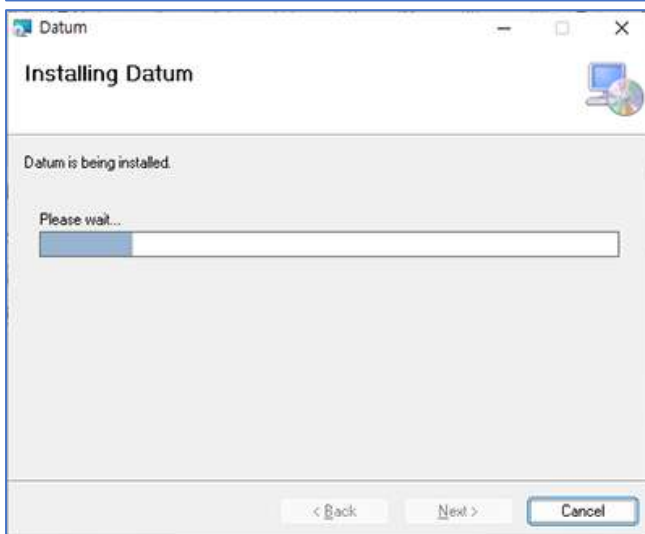
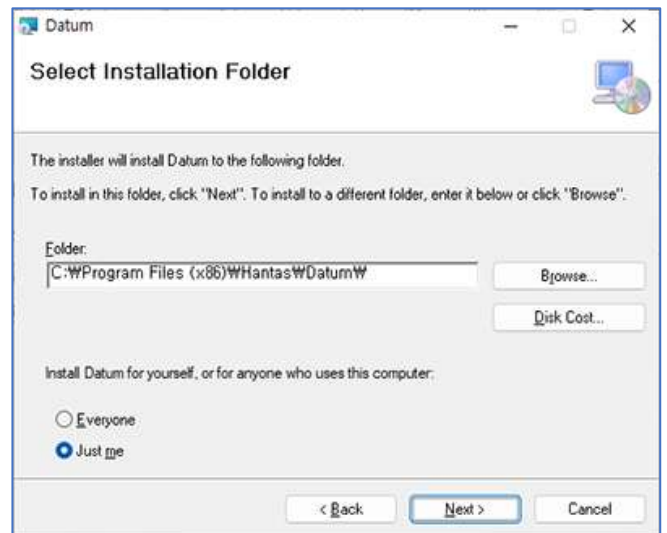
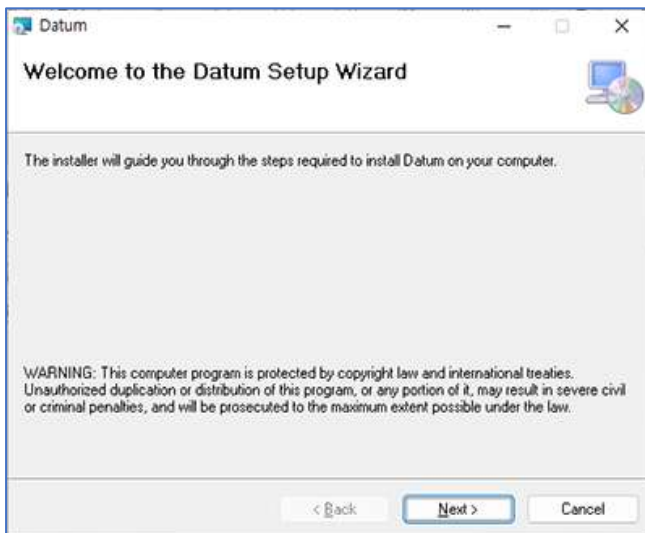
2.2.2 Install Npgsql 4.1.8

- **Npgsql** installs the essential system files for using the database functionality.
- You must install **Npgsql** before **DOGANet** runs.
- If you are requesting administrator privileges while installing **Npgsql**, press the **“Yes”** button to continue.
- In step Custom setup, you must press the **"Npgsql GAC installation"** item to change it to the **"Will be installed on local hard drive"** item.



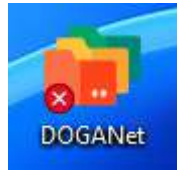


2.2.3 Install DOGANet

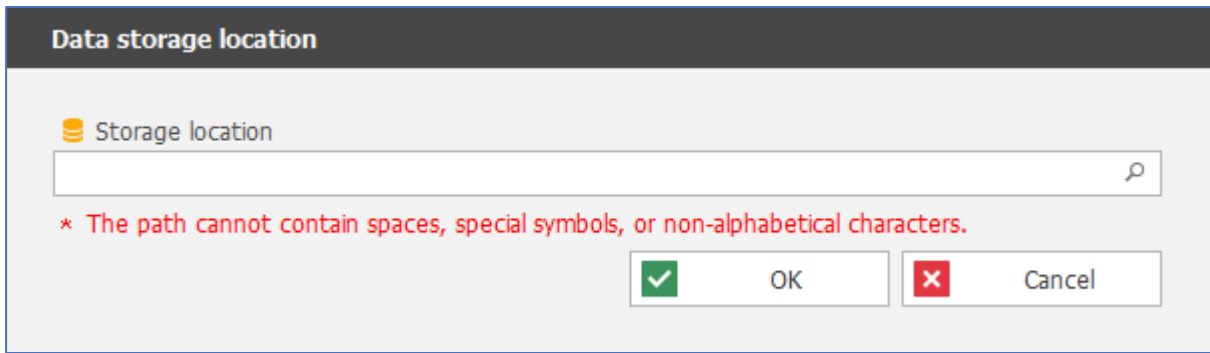


- If you are requesting administrator privileges while installing **DOGANet**, press the “**Yes**” button to continue.
- **.NET Framework 4.8** must be installed to install **DOGANet**, so please refer to “**2.5.1. Install .NET Framework 4.8**” and install **.NET Framework 4.8** in advance.

2.2.4 Run DOGANet and initialize the database



If the installation ends successfully, you'll see a shortcut icon on your desktop that you can double-click to launch **DOGANet**.



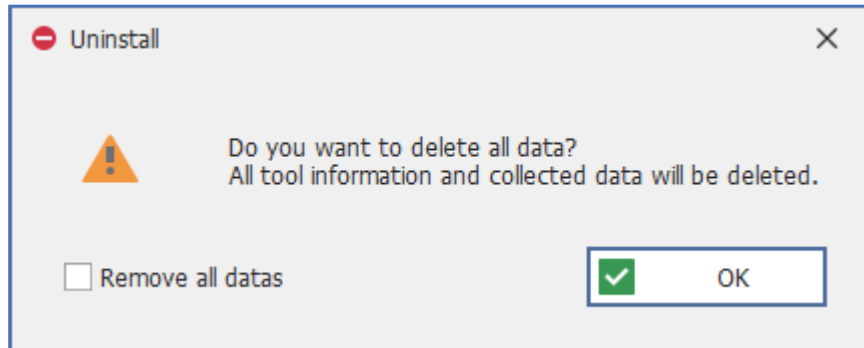
When you run **DOGANet** for the first time, a window will appear on the screen asking you to specify the path where the database will be installed. Click the magnifying glass icon to the right of the "**Storage location**" item to specify the path where the database will be installed and press the "**OK**" button. **Please note that if the installation path contains spaces, special characters, or non-alphabetic characters, the installation may not be performed correctly.**



When the initialization is complete, a message like the one above will appear on the screen, and you can close the window by pressing the "**OK**" button or wait for a while and the window will close automatically. After that, please run **DOGANet** again. If you had a problem installing the database, it may cause an error when running **DOGANet**, in which case, please go to the database installation path, delete the folder, and run **DOGANet** again to reinstall the database to the correct location.

2.2.5 Uninstall DOGANet

You can uninstall **DOGANet** using the “**Program install/uninstall**” feature provided by Windows. When uninstalling **DOGANet**, if you want to delete all the data, tool information, program settings, etc. collected so far, please check “**Remove all data**” in the lower left corner of the option window that appears during the uninstallation process and click the OK button.



3 LICENSE

DOGANet needs **License dongle USB or Key activation** to be used as a commercial software.

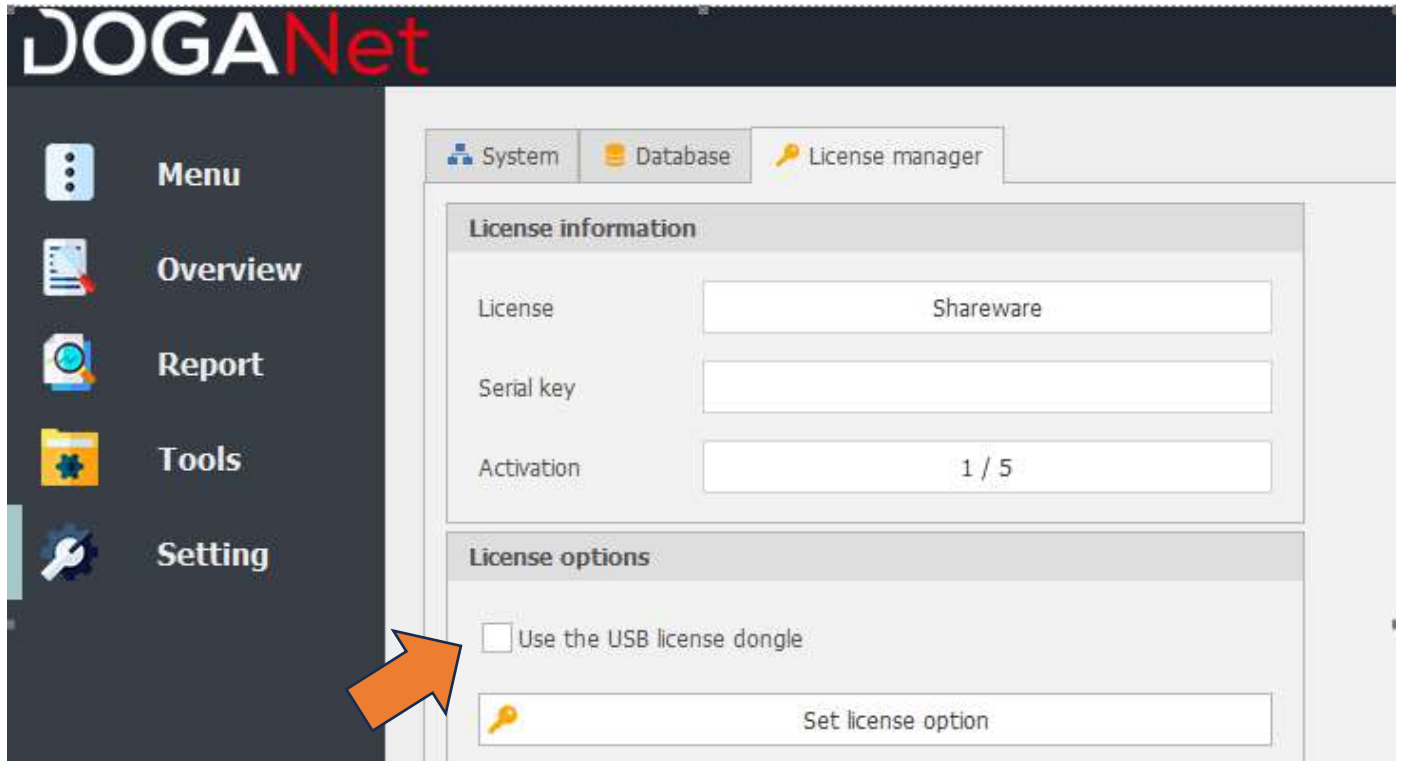
If **License dongle USB or Key licence** is not present, the software will shut down in 4 hours.

The license type limits the number of tools that can be activated, and the software will exit after 4 hours, even if the number of tools that are activated is greater than the number of tools that the license supports.

License type	Number of tools available for activation
NO LICENSE	Exit automatically in 4 hours.
TYPE LITE	Up to 10 tools
TYPE STANDARD	Up to 25 tools
TYPE ADVANCED	Up to 50 tools
TYPE PRO	Up to 100 tools

3.1 Licence activation : USB dongle

Select 'Use the USB licence dongle' and click on 'set licence option'.



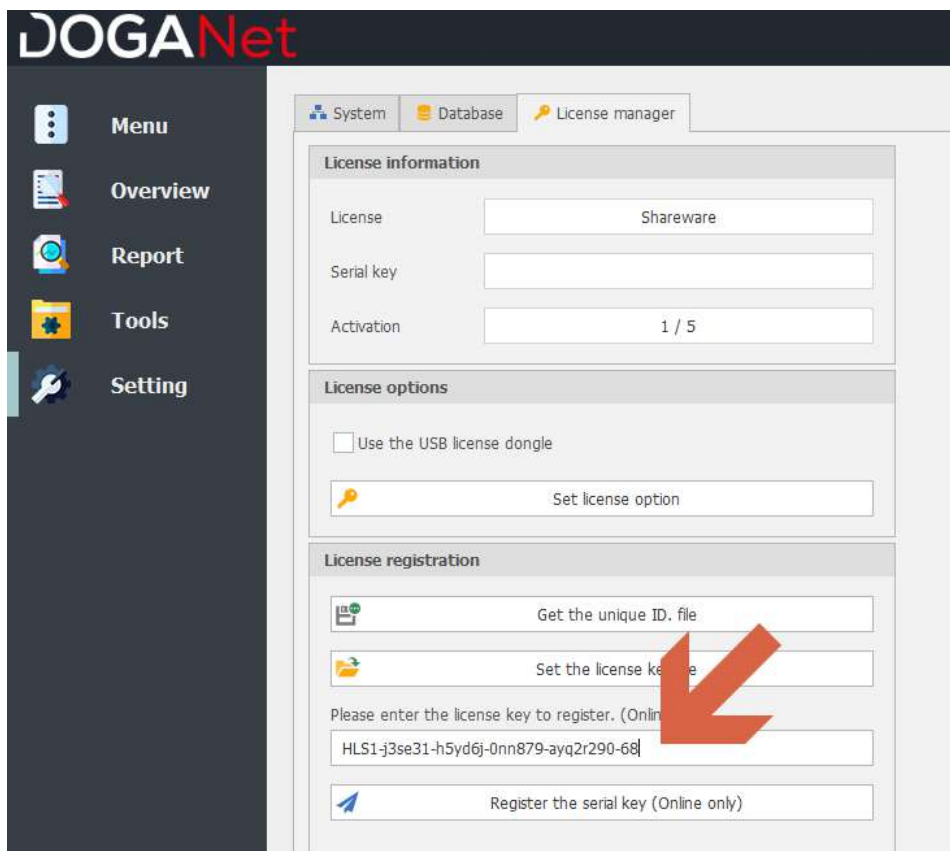
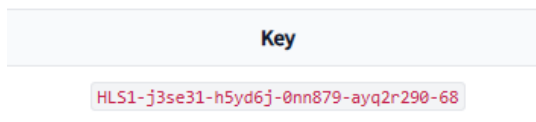
3.2 Licence activation : registration Key



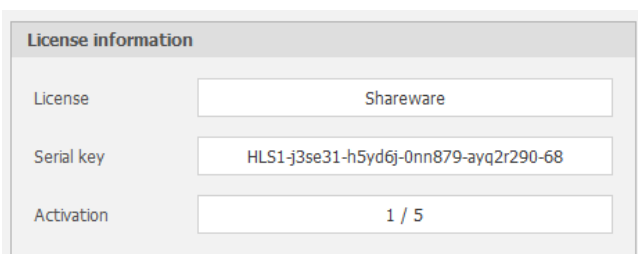
Online users activate their license by directly entering the serial key,
While offline users activate their license by submitting the unique key of the installed PC to DOGA to receive the corresponding license key file.

3.2.1 License activation for online users (only if DOGANet computer is connected to Internet).

Online users are provided with only the “Key” item as below.



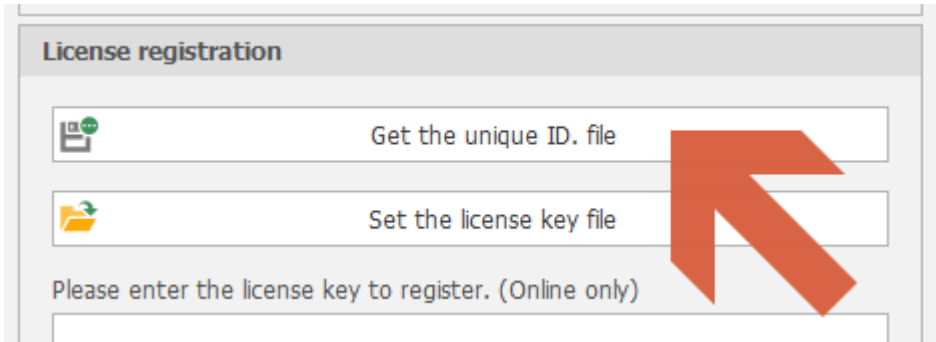
- 1) In the DogaNET Settings - License Manager menu, enter the provided Key in the License Registration field as shown in the image,
- 2) Then click the “Register the serial key” button at the bottom to activate the license.



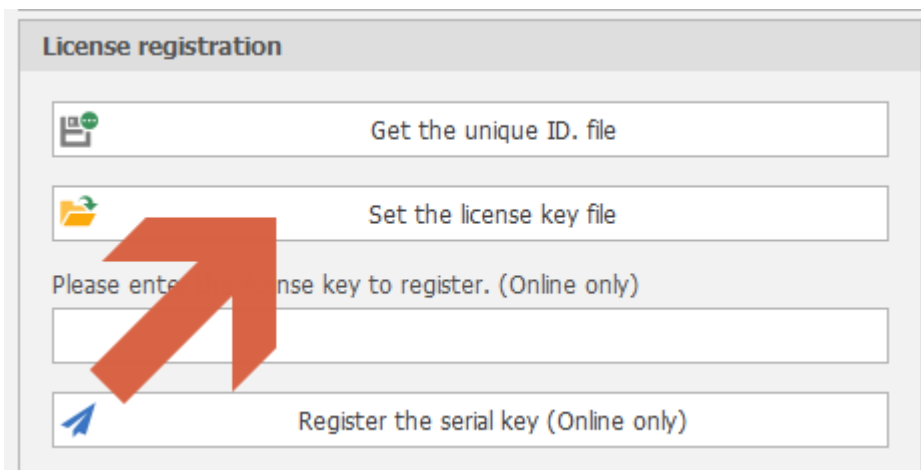
- 3) Upon successful completion, the license tier, serial key, and number of tool activations registered in the license information section will be displayed.

3.2.2 License activation for offline users (if DOGANet computer is NOT connected to Internet)

For users on offline closed networks without internet access, activate the license as follows.



- 1) In licence manager/registration clicks “Get the unique ID. file” under the “License manager” section to save the SUID file to the PC.
SUID is an encrypted file containing the secret key information essential for license issuance.
- 2) Copy the SUID file and send it to the DOGA representative.
- 3) DOGA will provide you by return the license key file (.elf extension).
- 4) Then complete license activation by registering the license key file (.elf) received through “Set the license key file”.




Caution

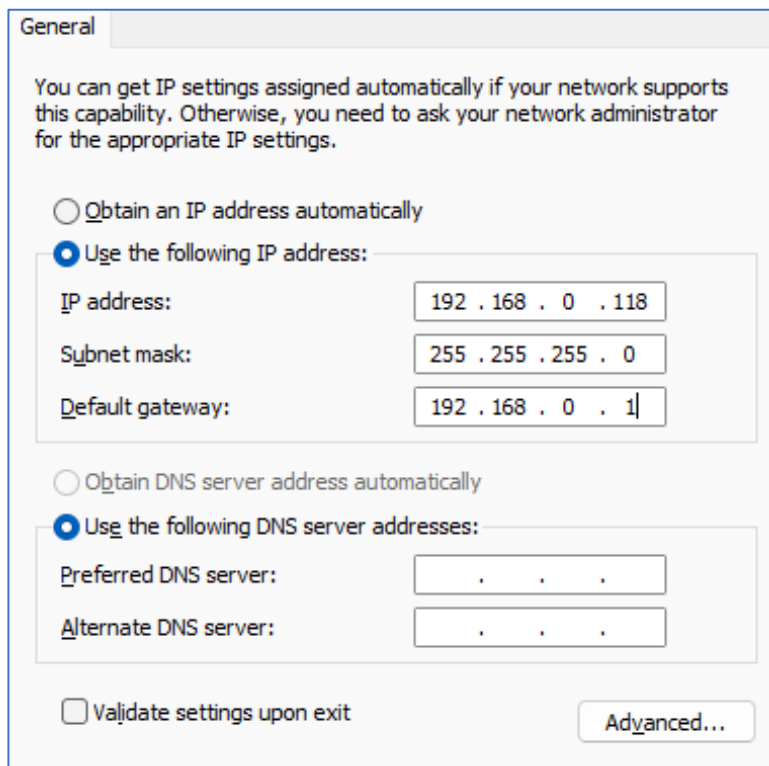
You can only activate the license using this license key file on the PC where you downloaded the secret key via “Get the unique ID. file.”


Once activated, a license cannot be used elsewhere until the DOGA administrator deactivates it..

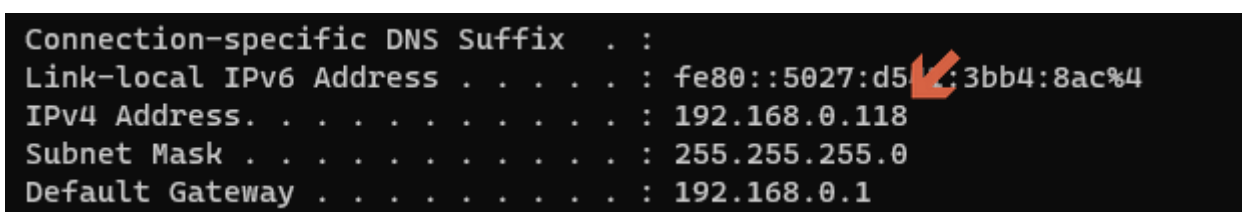
4 SETTINGS THE NETWORK

4.1 Setting the network of server PCs with DOGANet installed

- 1) Press **Window** () + **R** to open the Run window.
- 2) Type "**control**" in the input box and press **Enter** to open the **Control Panel**.
- 3) In the "**Network and Internet**" section, click "**Network and Sharing Center**" to open it.
- 4) Click "**Change adapter settings**" in the left menu to open it.
- 5) Select the network adapter and select the "**Properties**" menu from the menu that appears from the right-click. When choosing a network adapter, make sure you select a network adapter that is connected to the network that the tool you want to collect data from is connected to.
- 6) In the properties window, locate and click "**Internet Protocol Version 4 (TCP/IPv4)**" and click the "**Properties**" button below.
- 7) In the Internet Protocol version4 window, enter the IP address that the administrator wants.
You can use an automatic IP assigned by your router using DHCP, but **we recommend that you enter and use a static IP** because the system might not work if the IP changes.



- 8) When you are done entering, press the "**OK**" button to save the settings.
- 9) Press **Window** () + **R** to open the Run window.
- 10) Type "**cmd**" in the input box and press **Enter** to open the Command window.
- 11) In the command window, type "**ipconfig**" and press **Enter** to confirm that the IP address is applied.



4.2 Network settings for tools that connect directly with DOGANet

- Set the IP address of the PC where **DOGANet** is installed in “**Target IP**” of item “**Network – Remote server**” through **ParaMon PC software**⁴
- For “**Target Port**”, enter the port set by the user in **DOGANet**.
The default port number for direct connection tools set up in **DOGANet** is **4297**.

Driver	
Network	
Remote server	
Target IP	192.168.0.118
Target Port	4297
General	
Network enable	On
Mode	DHCP

4.3 Network settings when connecting with ParaMon-Pro X

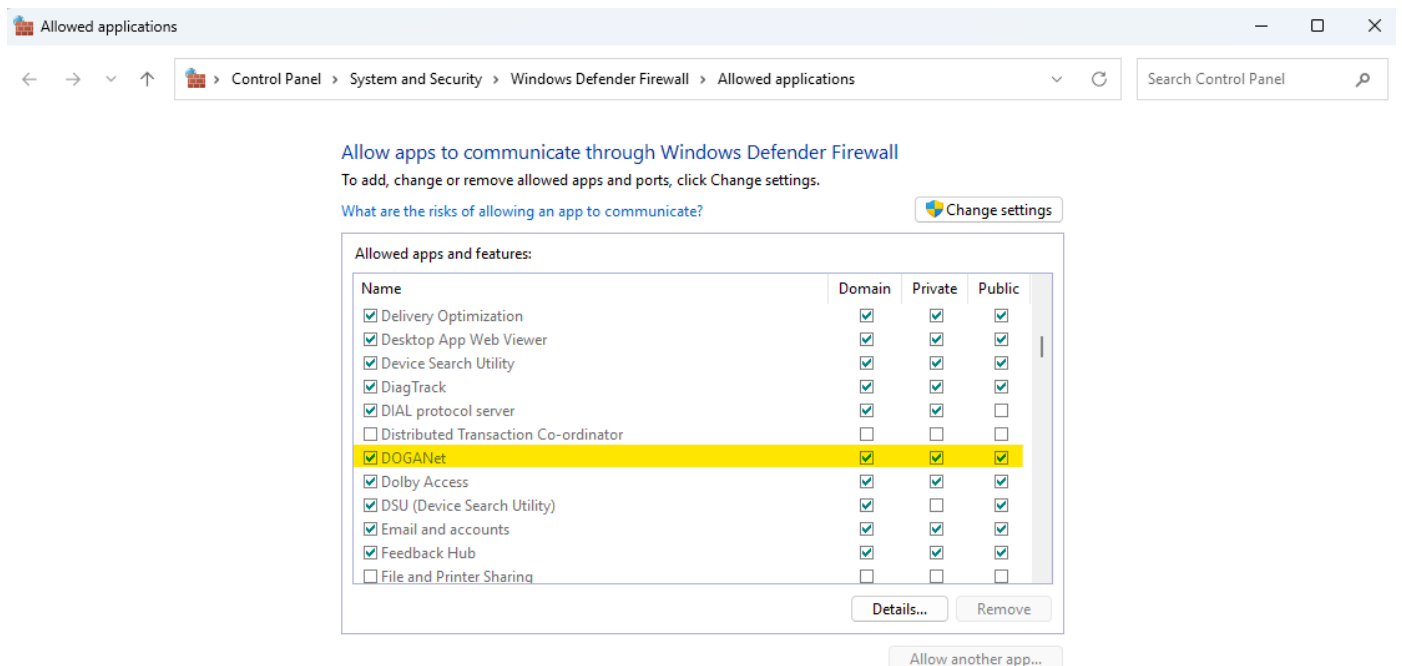
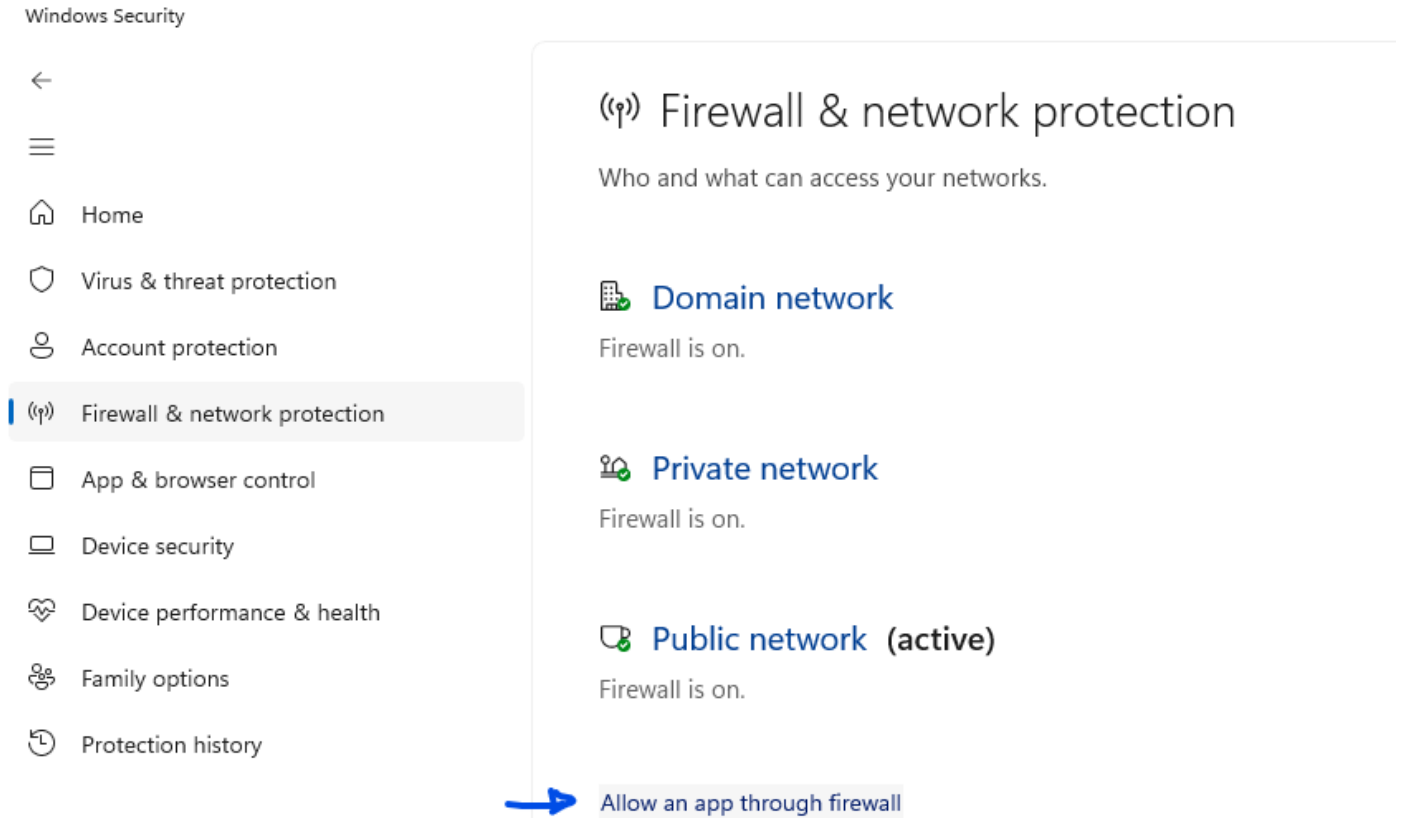
- Set the IP address of the PC where **DOGANet** is installed in “**Server IP address**” of item “**Setting – Share – Remote Pro X (Client)**” of ParaMon-Pro X
- For “**Port**”, enter the port you set up in **DOGANet**.
- The default port number for the ParaMon-Pro X set in **DOGANet** is **4299**.

 Remote Pro X (Client)	Server IP address :	192	.	168	.	0	.	118
	Port :	4299						

⁴ **ParaMon PC software** is a free PC software provided by DOGA for the management of the tools.

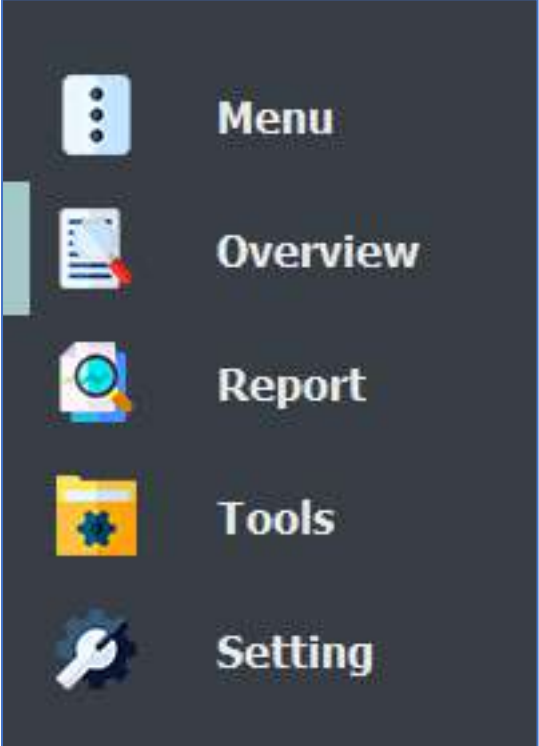
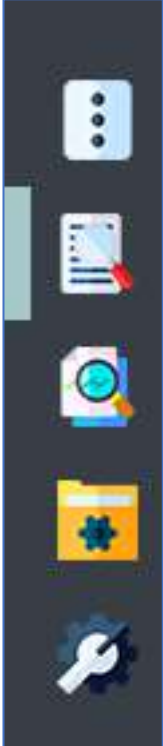
4.4 Firewall settings

Please allow DOGANet application through Firewall.



5 MAIN MENU

When you run **DOGANet**, the main menu is on the left.

Expanded menu	Collapsed menu
	

- **Overview**
Provides a simplified overview of the current state of the tool or the data collected.
- **Report**
The collected data is searched under various conditions, and analysis values based on the results of the search are provided.
- **Tools**
Provides features such as group management, tool activation, and display information about the tool. You must be logged in to use this menu.⁵
- **Setting**
Provides system settings for the **DOGANet**. You must be logged in to use this menu.

⁵ The default password for **DOGANet** is "admin".

5.1 Overview

Overview provides information about the tool's status or log information, recently collected event information, and changes in engagement by time/day.

The screenshot displays three main sections of the software interface:


- Tool status:** A table listing tools with columns for Name, Serial number, IP address, Type, Model, and State. Tools are categorized as 'Unmanaged' or 'Connected'. A summary bar at the bottom shows 'Connected: 4'.
- System logs:** A log table with columns for Date Time and Message, showing system events like 'Start monitoring' and 'Periodic database backup is complete'.
- Event status:** A detailed table of fastening events with columns for Tool, Time, Fastening time, Torque, Speed, Angle 1, Angle 2, Angle 3, Direction, and Status.

5.1.1 Tool status

Name	Serial number	IP address	Type	Model	State
Unmanaged					
MDT2007151234	2007151234	192.168.0.27	MDT	MDT2604	Connected
BPT2212200001	2212200001	192.168.0.43	BPT	BPT60	Disconnected
BMT2003190012	2003190012	192.168.0.9	BMT	BMT3204	Connected
PROX2210129999	2210129999	192.168.0.230			
BM2002100023	2002100023	192.168.131.78	BM	BM3201	Connected

Summary bar: Connected : 3 | Disconnected : 1


The Tool status item provides detailed information about the currently active tools. The information and connection status of the tool are provided in tree form. And the bottom bar graph shows the number of tools that connected and disconnected count.

- Update the status of all tools through the  button.

5.1.2 System logs

Date Time	Message
2022-11-10 12:17:45.195	Tool BMT2003190012 change in activation status (True)
2022-11-10 12:17:43.342	Tool MDTC2007151234 change in activation status (True)
2022-11-10 12:17:39.898	Tool BM2002100023 change in activation status (True)
2022-11-10 12:17:19.535	The system has been started.
2022-11-10 12:14:35.268	The system has been shut down.
2022-11-10 12:14:29.050	License key not found.
2022-11-10 12:14:09.483	The system has been started.
2022-11-10 12:13:41.584	The system has been shut down.
2022-11-10 12:13:38.812	License key not found.
2022-11-10 12:03:33.361	The system has been started.
2022-11-10 11:29:22.269	The system has been shut down.
2022-11-10 11:22:00.412	Tool BMT2003190012 change in activation status (False)
2022-11-10 11:21:58.571	Tool BM2002100023 change in activation status (False)
2022-11-10 11:21:56.816	Tool MDTC2007151234 change in activation status (False)
2022-11-10 11:21:53.904	Tool BMT2003190012 change in activation status (True)
2022-11-10 11:21:51.814	Tool BM2002100023 change in activation status (True)

The System log entry provides logs that occur in the software. Displays software execution or shutdown, tool connection status changes, errors, and system message history.

- Save all log messages to a file through the  button.
- General items are common alarms, such as connections from active tools and changes in tool status.
- **Caution** entries occur when data collection is interrupted by a problem, such as an active tool disconnecting, or an administrator shutting down the system. They do not directly cause problems with the system but can be problematic for data collection.
- **Error** entries occur when a license is not recognized, or a system error occurs. They should be checked carefully by the administrator.

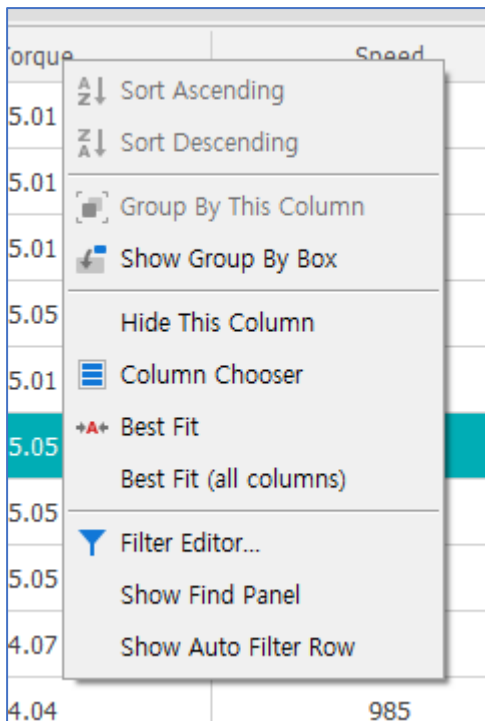
5.1.3 Event status

1) Recent event

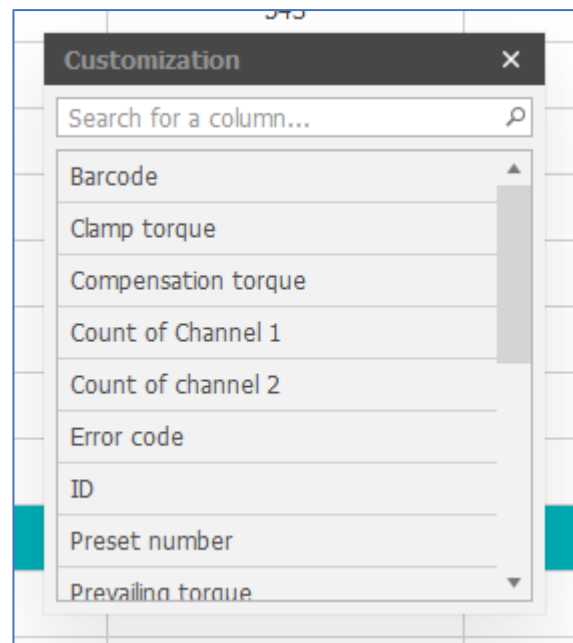
Tool	Time	Fastening time	Torque	Speed	Angle 1	Angle 2	Angle 3	Direction	Status
MDTC2007151234	2022-11-09 15:02:03.000	558	5.01	543	1495	10	1595	Fastening	Fastening OK
MDTC2007151234	2022-11-09 15:02:02.000	561	5.01	543	1288	11	1299	Fastening	Fastening OK
MDTC2007151234	2022-11-09 15:02:01.000	334	5.01	543	624	10	634	Fastening	Fastening OK
MDTC2007151234	2022-11-09 15:02:00.000	532	5.05	543	1425	8	1434	Fastening	Fastening OK
MDTC2007151234	2022-11-09 15:01:59.000	463	5.01	543	1170	9	1188	Fastening	Fastening OK
MDTC2007151234	2022-11-09 15:01:58.000	568	5.05	543	1334	10	1344	Fastening	Fastening OK
MDTC2007151234	2022-11-09 15:01:57.000	481	5.05	543	1269	11	1280	Fastening	Fastening OK
MDTC2007151234	2022-11-09 15:01:56.000	543	5.05	543	1463	8	1471	Fastening	Fastening OK
BH2002100023	2022-11-09 15:01:47.000	682	4.07	985	3177	14	3191	Fastening	Fastening OK
BH2002100023	2022-11-09 15:01:46.000	676	4.04	985	3143	15	3158	Fastening	Fastening OK
BH2002100023	2022-11-09 15:01:45.000	619	4.05	985	2807	14	2821	Fastening	Fastening OK

The Recent event displays up to 100 recently collected event data from the registered tools. It is not suitable for viewing collected data, but it is easy to understand changes in event data. Double-click the selected item to view the graph data.

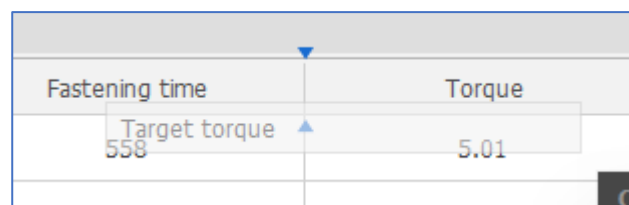
Column menu



Customization

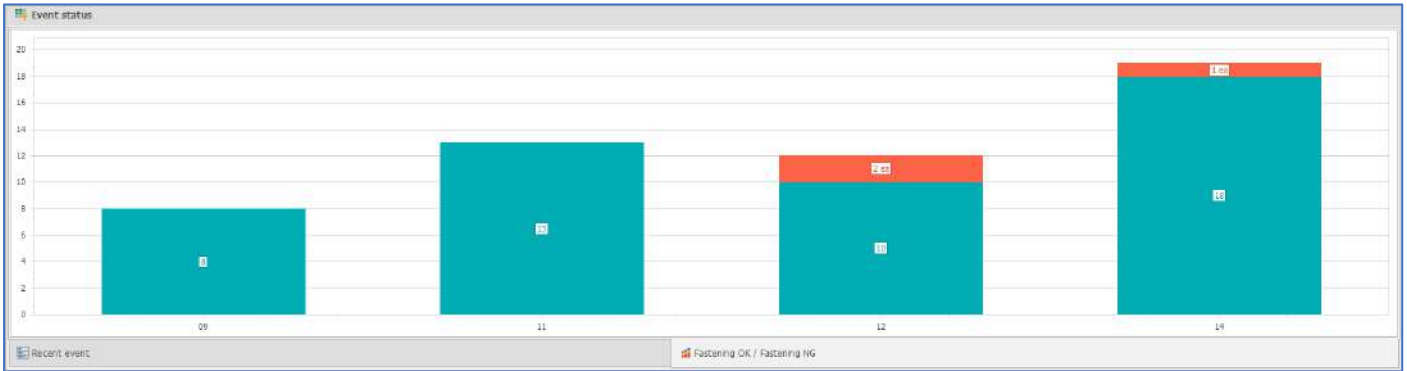


Column insert or remove



- In Recent event, right-click over the column header to display the column menu.
- When you select the "**Column chooser**" item in the column menu, the "**Customization**" window appears on the screen.
- Drag the desired column in the "**Customization**" item and drop it to the desired location, and the contents of that column will be displayed in the Recent event. Conversely, you can hide columns from Recent events by dragging and dropping them in the "**Customization**" window.
- The configuration of the changed column is saved and then applied automatically.

2) Fastening OK / Fastening NG





Fastening OK/Fastening NG displays the count of time or daily engagement change.

- Right-click on the chart to select your hourly and daily changes through the menu that appears.
- **Today:** Displays the count of tightening change over time for today's work.
- **This week:** Displays the count of tightening change over day for this week.

5.2 Report

ID	Tool	Date time	Fastening	Preset nu.	Target tor...	Torque	Unit	Speed	Angle 1	Angle 2	Angle 3	Snug angle	Remain scr.	Error code	Dractian	Status
882556	MDT2022	2022-10-2	256	1	1	1.12	Kgf.cm	160	256	2	258	0	1	0	Fastening	Fastening OK
882555	MDT2022	2022-10-2	256	1	1	1.12	Kgf.cm	160	256	2	258	0	1	0	Fastening	Fastening OK
882483	MDT2022	2022-10-2	256	1	1	1.12	Kgf.cm	160	256	2	258	0	1	0	Fastening	Fastening OK
882482	MDT2022	2022-10-2	250	1	1	1.12	Kgf.cm	100	250	2	258	0	1	0	Fastening	Fastening OK
882410	MDT2022	2022-10-2	256	1	1	1.12	Kgf.cm	160	256	2	258	0	1	0	Fastening	Fastening NG
882409	MDT2022	2022-10-2	256	1	1	1.12	Kgf.cm	160	256	2	258	0	1	0	Fastening	Fastening NG
882337	MDT2022	2022-10-2	256	1	1	1.12	Kgf.cm	160	256	2	258	0	1	0	Fastening	Fastening OK
882336	MDT2022	2022-10-2	256	1	1	1.12	Kgf.cm	160	256	2	258	0	1	0	Fastening	Fastening OK
882264	MDT2022	2022-10-2	256	1	1	1.12	Kgf.cm	160	256	2	258	0	1	0	Fastening	Fastening OK
882263	MDT2022	2022-10-2	256	1	1	1.12	Kgf.cm	160	256	2	258	0	1	0	Fastening	Fastening OK
882191	MDT2022	2022-10-2	256	1	1	1.12	Kgf.cm	160	256	2	258	0	1	0	Fastening	Fastening OK
882190	MDT2022	2022-10-2	256	1	1	1.12	Kgf.cm	160	256	2	258	0	1	0	Fastening	Fastening OK
882118	MDT2022	2022-10-2	256	1	1	1.12	Kgf.cm	160	256	2	258	0	1	0	Fastening	Fastening OK
882117	MDT2022	2022-10-2	256	1	1	1.12	Kgf.cm	160	256	2	258	0	1	0	Fastening	Fastening OK
882045	MDT2022	2022-10-2	256	1	1	1.12	Kgf.cm	160	256	2	258	0	1	0	Fastening	Fastening OK
882044	MDT2022	2022-10-2	256	1	1	1.12	Kgf.cm	160	256	2	258	0	1	0	Fastening	Fastening OK
881972	MDT2022	2022-10-2	256	1	1	1.12	Kgf.cm	160	256	2	258	0	1	0	Fastening	Fastening OK
881971	MDT2022	2022-10-2	256	1	1	1.12	Kgf.cm	160	256	2	258	0	1	0	Fastening	Fastening OK
881899	MDT2022	2022-10-2	256	1	1	1.12	Kgf.cm	160	256	2	258	0	1	0	Fastening	Fastening NG
881898	MDT2022	2022-10-2	256	1	1	1.12	Kgf.cm	160	256	2	258	0	1	0	Fastening	Fastening NG
881826	MDT2022	2022-10-2	250	1	1	1.12	Kgf.cm	160	250	2	258	0	1	0	Fastening	Fastening OK
881825	MDT2022	2022-10-2	256	1	1	1.12	Kgf.cm	160	256	2	258	0	1	0	Fastening	Fastening OK
881753	MDT2022	2022-10-2	256	1	1	1.12	Kgf.cm	160	256	2	258	0	1	0	Fastening	Fastening OK
881752	MDT2022	2022-10-2	256	1	1	1.12	Kgf.cm	160	256	2	258	0	1	0	Fastening	Fastening OK
881680	MDT2022	2022-10-2	256	1	1	1.12	Kgf.cm	160	256	2	258	0	1	0	Fastening	Fastening OK
881679	MDT2022	2022-10-2	256	1	1	1.12	Kgf.cm	160	256	2	258	0	1	0	Fastening	Fastening OK
881607	MDT2022	2022-10-2	256	1	1	1.12	Kgf.cm	160	256	2	258	0	1	0	Fastening	Fastening OK
881606	MDT2022	2022-10-2	256	1	1	1.12	Kgf.cm	160	256	2	258	0	1	0	Fastening	Fastening OK
881534	MDT2022	2022-10-2	256	1	1	1.12	Kgf.cm	160	256	2	258	0	1	0	Fastening	Fastening OK

Report features provide the ability to query and analyze event data collected so far.

- You can generate up to 8 reports using the  button.
- You can change the name of report by double-clicking the tab for each report
- You can close the report through the  button on the right side of the tab for each report.

5.2.1 Search options

Search options

Tools

Status

Direction

Date

2023년 1월 3일 화요일

◀ 2023년 1월 ▶

일	월	화	수	목	금	토
1	2	3	4	5	6	7
8	9	10	11	12	13	14
15	16	17	18	19	20	21
22	23	24	25	26	27	28
29	30	31	1	2	3	4
5	6	7	8	9	10	11

Clear

You can set different search options in the **Report**. Search only for data that satisfies all options. If you have a lot of search results, it takes a lot of time, so we recommend using option as much as possible.

-Tools

Retrieves data only for the selected tool. If nothing is selected, retrieves data for all tools.

-Status

Retrieves data only for the selected Status. If none is selected, retrieves data for all Status.

-Direction

Retrieves data only for the selected Direction. If nothing is selected, retrieves data for all Directions.

-Date

Retrieves data only for the selected date. If none is selected, retrieves data for all dates. You can select multiple dates by using the Ctrl key and the mouse drag.

5.2.2 Search result

1) Result

ID	Tool	Date time	Fastening tl...	Preset num...	Target torq...	Torque	Unit	Speed	Angle 1	Angle 2	Angle 3	Snug angle	Remain sca...	Error code	Direction	Status
1	MDT20221...	2022-10-20...	256	1	1	1.12	Kgf.cm	160	256	2	258	0	1	0	Fastening	Fastening NG
2	MDT20221...	2022-10-20...	256	1	1	1.12	Kgf.cm	160	256	2	258	0	1	0	Fastening	Fastening NG
3	MDT20221...	2022-10-20...	256	1	1	1.12	Kgf.cm	160	256	2	258	0	1	0	Fastening	Fastening NG
101	MDT20221...	2022-10-20...	256	1	1	1.12	Kgf.cm	160	256	2	258	0	1	0	Fastening	Fastening OK
102	MDT20221...	2022-10-20...	256	1	1	1.12	Kgf.cm	160	256	2	258	0	1	0	Fastening	Fastening OK
103	MDT20221...	2022-10-20...	256	1	1	1.12	Kgf.cm	160	256	2	258	0	1	0	Fastening	Fastening OK
200	MDT20221...	2022-10-20...	256	1	1	1.12	Kgf.cm	160	256	2	258	0	1	0	Fastening	Fastening OK
201	MDT20221...	2022-10-20...	256	1	1	1.12	Kgf.cm	160	256	2	258	0	1	0	Fastening	Fastening OK
202	MDT20221...	2022-10-20...	256	1	1	1.12	Kgf.cm	160	256	2	258	0	1	0	Fastening	Fastening OK
299	MDT20221...	2022-10-20...	256	1	1	1.12	Kgf.cm	160	256	2	258	0	1	0	Fastening	Fastening OK
300	MDT20221...	2022-10-20...	256	1	1	1.12	Kgf.cm	160	256	2	258	0	1	0	Fastening	Fastening OK
301	MDT20221...	2022-10-20...	256	1	1	1.12	Kgf.cm	160	256	2	258	0	1	0	Fastening	Fastening OK
398	MDT20221...	2022-10-20...	256	1	1	1.12	Kgf.cm	160	256	2	258	0	1	0	Fastening	Fastening OK
399	MDT20221...	2022-10-20...	256	1	1	1.12	Kgf.cm	160	256	2	258	0	1	0	Fastening	Fastening OK
400	MDT20221...	2022-10-20...	256	1	1	1.12	Kgf.cm	160	256	2	258	0	1	0	Fastening	Fastening OK
497	MDT20221...	2022-10-20...	256	1	1	1.12	Kgf.cm	160	256	2	258	0	1	0	Fastening	Fastening OK
498	MDT20221...	2022-10-20...	256	1	1	1.12	Kgf.cm	160	256	2	258	0	1	0	Fastening	Fastening OK
499	MDT20221...	2022-10-20...	256	1	1	1.12	Kgf.cm	160	256	2	258	0	1	0	Fastening	Fastening OK
596	MDT20221...	2022-10-20...	256	1	1	1.12	Kgf.cm	160	256	2	258	0	1	0	Fastening	Fastening OK
597	MDT20221...	2022-10-20...	256	1	1	1.12	Kgf.cm	160	256	2	258	0	1	0	Fastening	Fastening OK
598	MDT20221...	2022-10-20...	256	1	1	1.12	Kgf.cm	160	256	2	258	0	1	0	Fastening	Fastening OK
695	MDT20221...	2022-10-20...	256	1	1	1.12	Kgf.cm	160	256	2	258	0	1	0	Fastening	Fastening NG
696	MDT20221...	2022-10-20...	256	1	1	1.12	Kgf.cm	160	256	2	258	0	1	0	Fastening	Fastening NG
697	MDT20221...	2022-10-20...	256	1	1	1.12	Kgf.cm	160	256	2	258	0	1	0	Fastening	Fastening NG
794	MDT20221...	2022-10-20...	256	1	1	1.12	Kgf.cm	160	256	2	258	0	1	0	Fastening	Fastening OK
795	MDT20221...	2022-10-20...	256	1	1	1.12	Kgf.cm	160	256	2	258	0	1	0	Fastening	Fastening OK
796	MDT20221...	2022-10-20...	256	1	1	1.12	Kgf.cm	160	256	2	258	0	1	0	Fastening	Fastening OK
893	MDT20221...	2022-10-20...	256	1	1	1.12	Kgf.cm	160	256	2	258	0	1	0	Fastening	Fastening OK
894	MDT20221...	2022-10-20...	256	1	1	1.12	Kgf.cm	160	256	2	258	0	1	0	Fastening	Fastening OK

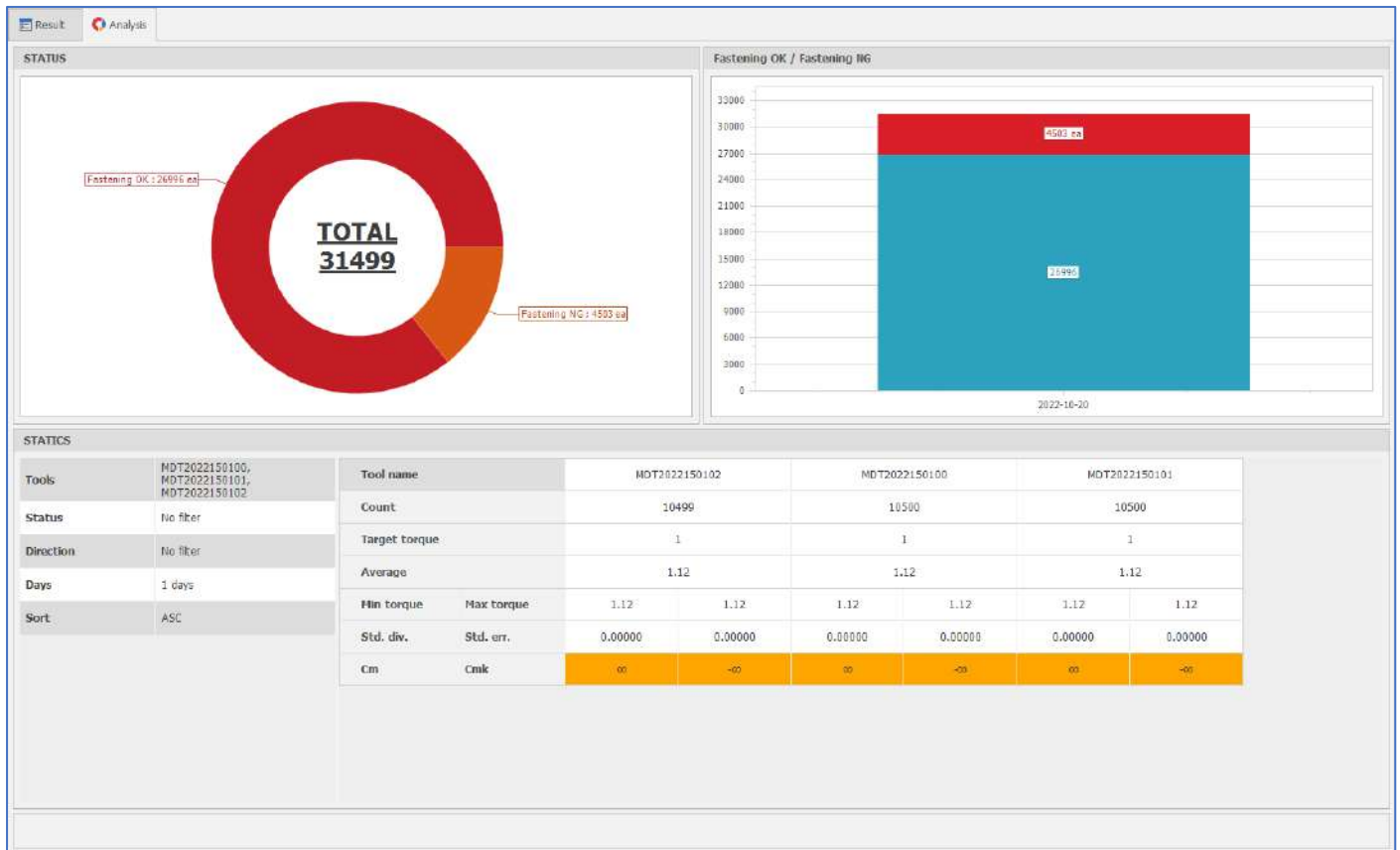
The Results tab displays all event data retrieved.

- **View**
Displays graph data for the selected item in a separate window. Select multiple items via Ctrl or Shift and press the View button to display up to 8 items in one window.
- **Export to file**
Saves the retrieved parent data as a **CSV** file or **XLSX** (EXCEL) file. The saved form is saved as it appears on the screen.
- **Column chooser**
With the same functionality as right clicking a column header to select “**Column chooser**”, a column's list window appears on the screen, and you can add or delete specific columns by dragging and dropping columns.
- If the error code is not 0, you can see what the error is about by hovering the mouse pointer over it.

	1080	0	1080	332	Fastening NG
				332	Fastening NG
				0	Fastening OK
				0	Fastening OK

ERROR - 332
Angle over
Target torque reached over the Max angle .

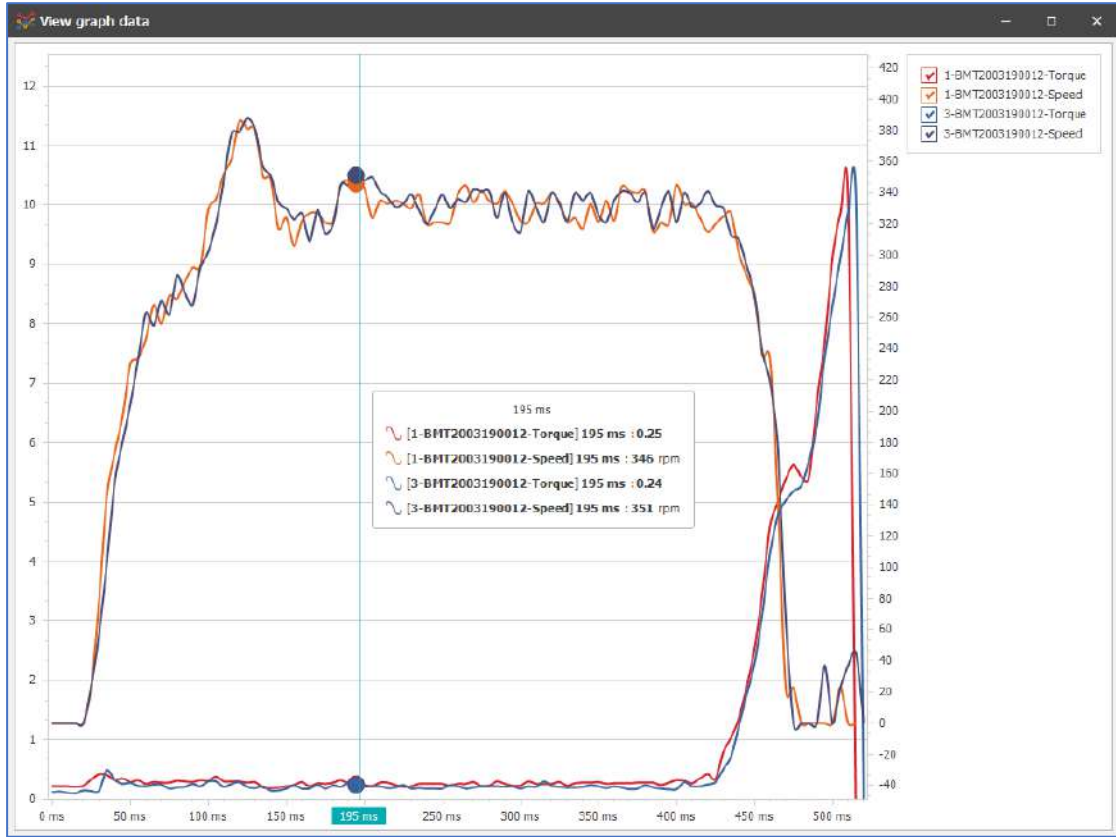
2) Analysis



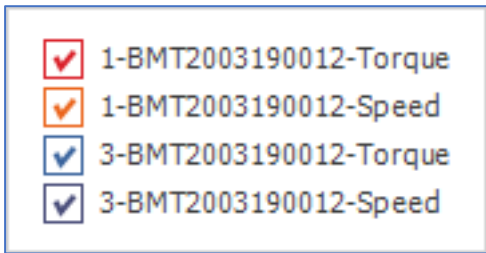
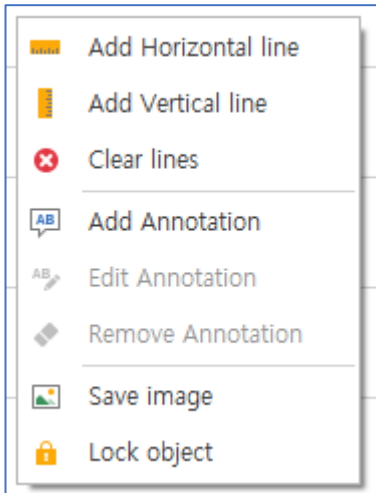
The Analysis tab provides analysis data for the retrieved data.

- **Status**
Displays a pie chart of the total number of retrieved data and the number of individuals according to Status items.
- **Fastening OK/Fastening NG**
Displays the number of Fastening OK/NG for retrieved data by date. You can change it by day, month, and year using the menu that appears by right-clicking on the chart.
- **Statics**
Provides analysis values based on the selected search criteria and each tool.

View graph data



The View window displays the Graph data of the data selected in the Result item. If multiple event data is selected, multiple charts are displayed in a single pane. Users can move the selected chart left or right by clicking the mouse on the desired chart and pressing the keyboard left/right keys.

Legend	Right menu
	
<p>The check box to the left of the legend allows you to select the chart that is displayed on the screen. Only checked items are displayed on the screen.</p>	<p>You can right-click a chart to open a menu that provides features such as lines or annotations to the chart.</p>

5.3 Tools (Tool manager)

Show disabled tool		Lock all items								
Name	IP address	Serial number	Type	Model	Temperature	Last data date	State			
Unmanaged										
GROUP-A										
GROUP-B										
MDT2022150171	192.168.0.118	2022150171	MDT	MDT2611	0.0 °C	2022-10-20 16:09:18	Connected			
MDT2022150172	192.168.0.118	2022150172	MDT	MDT2616	0.0 °C	2022-10-20 16:09:18	Connected			
MDT2022150173	192.168.0.118	2022150173	MDT	MDT3204	0.0 °C	2022-10-20 15:17:26	Disconnected			
MDT2022150174	192.168.0.118	2022150174	MDT	MDT3211	0.0 °C	2022-10-20 15:17:26	Disconnected			
MDT2022150175	192.168.0.118	2022150175	MDT	MDT2604	0.0 °C	2022-10-20 15:17:26	Disconnected			
MDT2022150176	192.168.0.118	2022150176	MDT	MDT2611	0.0 °C	2022-10-20 15:17:26	Disconnected			
MDT2022150177	192.168.0.118	2022150177	MDT	MDT2616	0.0 °C	2022-10-20 15:17:26	Disconnected			
MDT2022150178	192.168.0.118	2022150178	MDT	MDT3204	0.0 °C	2022-10-20 15:17:26	Disconnected			
MDT2022150179	192.168.0.118	2022150179	MDT	MDT3211	0.0 °C	2022-10-20 15:17:26	Disconnected			
MDT2022150180	192.168.0.118	2022150180	MDT	MDT2604	0.0 °C	2022-10-20 15:17:26	Disconnected			
GROUP-C										
GROUP-E										
GROUP-F										
GROUP-G										
GROUP-H										
GROUP-I										

The Tools menu displays information about the tools that are registered in **DOGANet** and sets the activation to perform data collection. When ParaMon-Pro X is connected, a group is created with the name "**PROX<SERIAL NUMBER>**", and tools registered with ParaMon-Pro X are added under that group.

- Status

A. **Disabled**: The tool has been connected but is disabled.

MDT2022150199	192.168.0.118	2022150199	MDT	MDT3211	0.0 °C	2022-10-20 15:17:26	Disabled
---------------	---------------	------------	-----	---------	--------	---------------------	----------

B. **Disconnected**: The tool is active but is currently not connected.

MDT2022150175	192.168.0.118	2022150175	MDT	MDT2604	0.0 °C	2022-10-20 15:17:26	Disconnected
---------------	---------------	------------	-----	---------	--------	---------------------	--------------


C. **Connected**: The tool is active and is currently connected.

MDT2022150171	192.168.0.118	2022150171	MDT	MDT2611	0.0 °C	2022-10-20 16:09:18	Connected
---------------	---------------	------------	-----	---------	--------	---------------------	-----------


D. **Group**: Groups that can contain tools or groups.


GROUP-A							
---------	--	--	--	--	--	--	--

- Drag and Drop



Drag and drop to move a group or tool to a child of the desired group. Press Shift to move to the parent group when dragging and dropping. If the item being dragged has an  mark, it cannot be moved to that point. Drag-and-drop functionality is not available when "**Lock all items**" is checked at the top.

- By default, disabled tools are not displayed, but you can display disabled tools by checking "**Show disabled tool**" at the top.



- You can add a group through the  button.

- You can delete a group or disabled tool through the  button. If a subgroup or tool exists within a group, you cannot delete it.


If you delete a disabled tool, all event data collected by that tool is also deleted.

- Modify the selected group through the  button or display information about the selected tool.
- Update the status of all tools through the  button.

5.3.1 Tool information

Tool information ✖			
Tool ID	1	Register date	2022-11-09
Tool name	BMT2003190012 	Calibration date	
IP address	192.168.0.12	Last data time	2022-11-09 15:01:35
Serial number	2003190012	Usage count	57029
Type	BMT	Fastening OK	10
Model	BMT3204	Fastening NG	0
Firmware	1.41.2	Other	0
Activation	Enabled	Total count	10

Enabled

You can select a tool and check the tool information through the  button or double-click. You can change whether to disable the activation of the tool through the buttons on the bottom left. **Disabled tools stop the collection.**

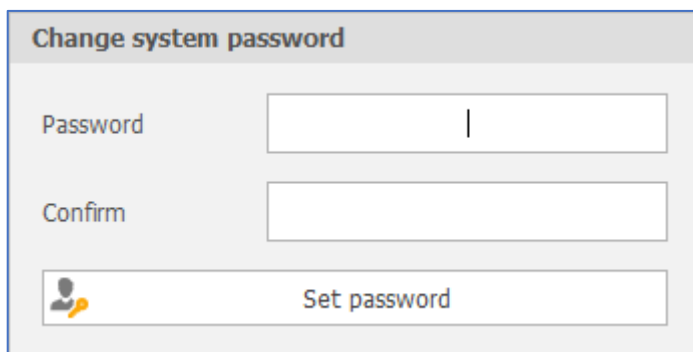
- **Tool ID**
Unique number given to the tool. You cannot change this unique number unless you delete the tool.
- **Tool name**
The name given to the tool. You can modify it by clicking the pencil icon on the right. If the tool is connected via **ParaMon-Pro X**, it is registered with the name specified by **ParaMon-Pro X**, and if you change the name of the tool in **DOGANet**, **ParaMon-Pro X** will also change the tool name.
- **IP address**
IP address of the connected tool. If the IP changes, it is automatically updated.
- **Serial number**
The unique serial number of the tool.
- **Type**
The type of tool.
- **Model**
The model of tool
- **Activation**
Enabled/disabled state.

- **Register date**
Date and time the tool was registered.
- **Calibration date**
The last date the tool was calibrated. You can modify it by clicking the pencil icon on the right.
- **Last data time**
The date of the last event data received from the tool.
- **Usage count**
Number of uses of the motor stored in the tool.
- **Fastening OK**
The number of Fastening OKs among all event data received since the tool was registered.
- **Fastening NG**
The number of Fastening NGs among all event data received since the tool was registered.
- **Other**
The number of all event data received since the tool was registered except Fastening OK and Fastening NG.
- **Total count**
The number of all event data received since the tool was registered.

5.3.2 Settings

The Settings menu provides features such as changing the administrator password, the type of data you want to collect, database management, and license verification.

5.3.3 Change system password



The screenshot shows a dialog box titled "Change system password". It has two text input fields: "Password" and "Confirm". Below these fields is a button labeled "Set password" with a small icon of a person and a key.

- You can change the password by entering the password you want to change in the **Password** column, entering the same password in the **Confirm** column, and then changing the password through the "**Set password**" button.
- Your password is encrypted and stored on your PC. If you lose your password, please contact your administrator.
- The default password is "**admin**".

5.3.4 Set server settings

- In the Tool port field, enter the access port for tools that connect directly to **DOGANet**. The default value is **4297**.
- In the ParaMon-Pro X port field, enter the access port for the PRO X connecting to **DOGANet**. The default is **4299**.
- After entering the desired port number, you must press Set sever to apply and restart **DOGANet**.

5.3.5 Set monitoring data type

- You can set the type of data to collect and the type of sampling.
- Changing the settings will reload information from all tools and change the type of data that occurs later.
- If you select “**Torque/Angle**” for Type of channel 1, Type of channel 2 is not available.

5.3.6 Database Backup & Restore

1) Backup database

Backup all stored data to a file with a **.dat** extension. If you have a lot of data, you need a lot of capacity, so it is recommended that you check and backup free space.

2) Restore database

Restore through a backup file with a **.dat** extension. **You need to be careful because everything that's existing will disappear and be restored to new data.** You must restart the software after the restore.

5.3.7 Automatic backup

- Performs a database backup every period that you set to a folder that you set.
- If you are performing periodic backups, be mindful of your storage space.

5.3.8 License information

- **License**
The type of license currently active. See "**4. Licenses**" for a description of each type of license.
- **Serial number**
The serial number of the currently active license.
- **Activation**
The total number of tools supported by the license and the number of tools currently active.

6 SUPPORT

6.1 Troubleshooting

If you cannot resolve a problem despite reading this manual, please contact the DOGA After-Sales Department.



My client area on www.doga.fr

Go to your client area on www.doga.fr, click “Your contacts”, then select your specific **After-sales department contact** depending on the device type.

6.2 Hotline

For any questions about the use of the software

Please contact your Technical Salespeople.



My client area on www.doga.fr

Go to your client area on www.doga.fr, click “Your contacts”, then select your **Technical Salespeople** depending on the device type.

For any questions regarding troubleshooting

Please contact your After-Sales contact.



My client area on www.doga.fr

Go to your client area on www.doga.fr, click “Your contacts”, then select your specific **After-sales department contact** depending on the device type.

If our technician can remotely determine the origin of the fault, he will tell you what to do in order to repair it by yourself as much as possible.

