



Parts list & exploded view

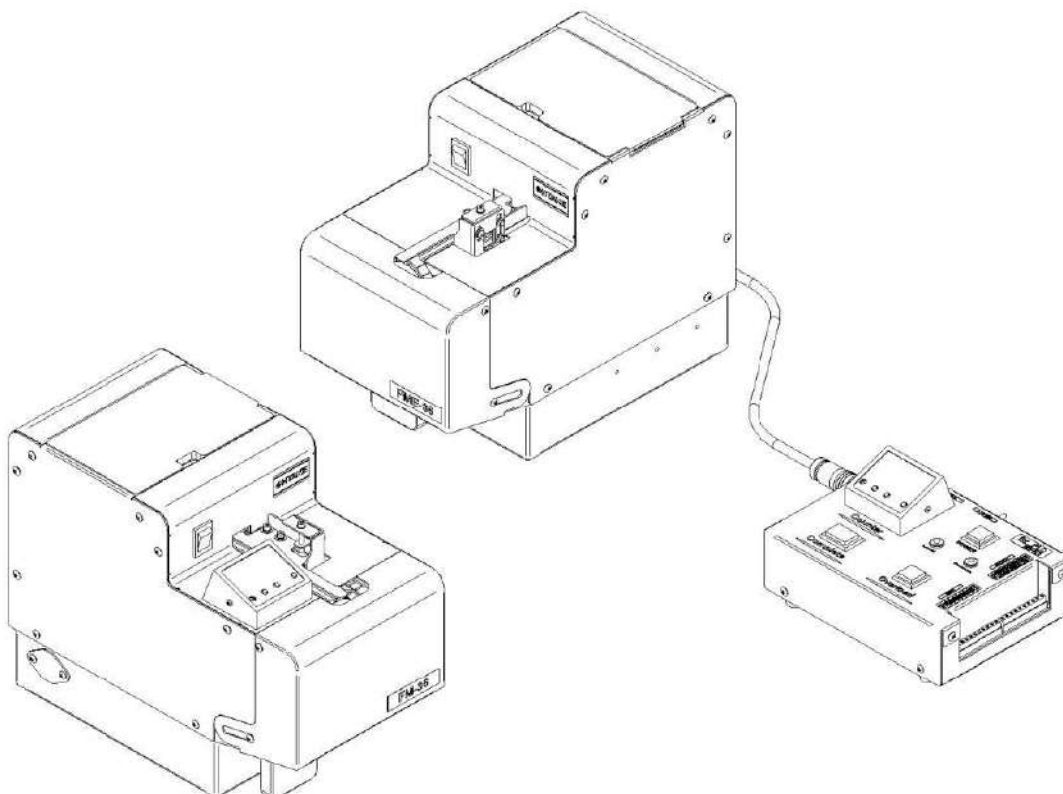
OHTAKE**FM-36
FME-36****OHTAKE automatic screw feeder NEJIKURA****FM-3630 / FM-3635 / FM-3640 / FM-3650 / FM-3660 series****FM-3630 / FM-3635 / FM-3640 / FM-3650 / FM-3660 series**

© DOGA DOC.60483.10/22

IMPORTANT

- Parts would be delivered in the minimum order quantity base.
- Some components are supplied only as assemblies.
- The components assembly might be reviewed without any notice.
- The minimum order quantities are indicated in the item descriptions.
- Any variations and upgrades in the designs of the product change without notice.

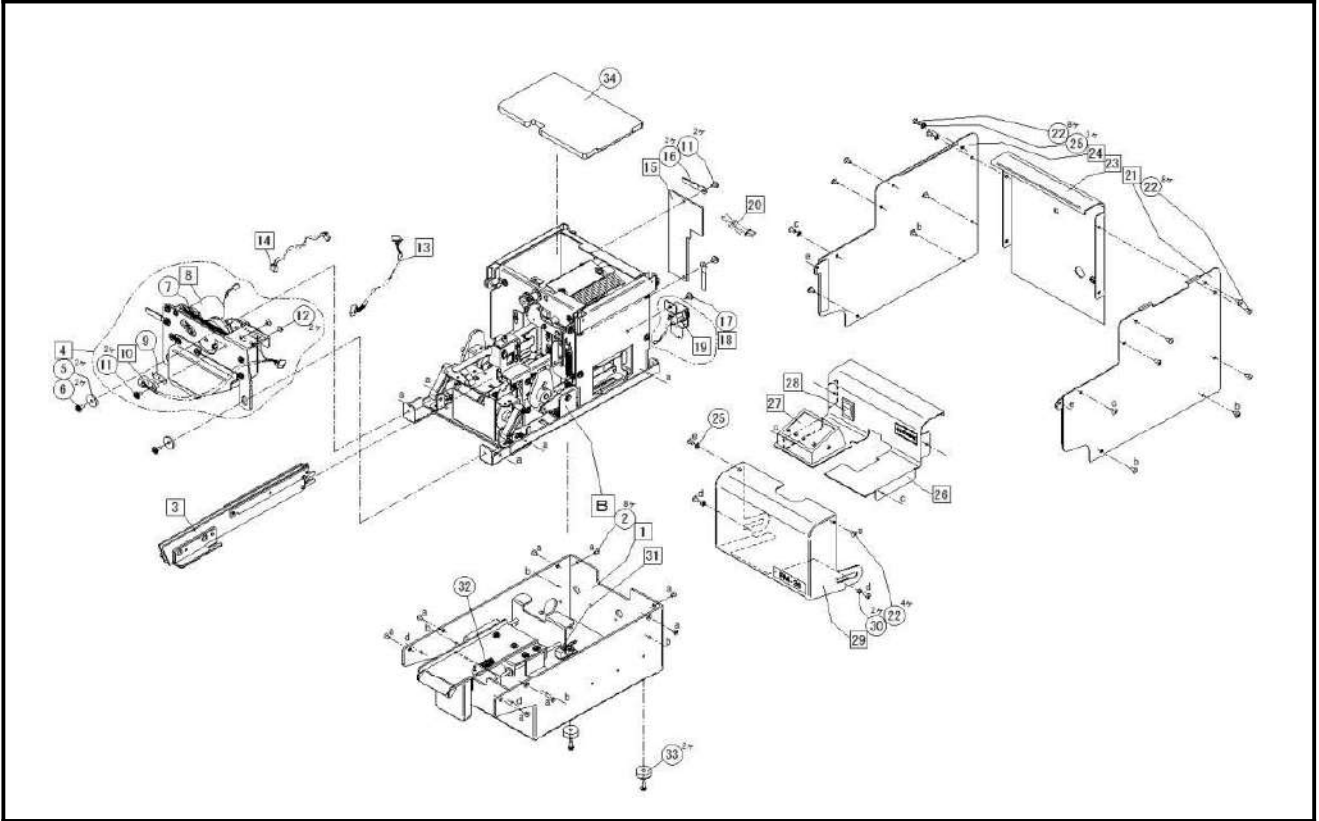
OVERVIEW



A

[FM-36**]

A



No.	Part Number	Name of Part	Q'ty used per set	Minimum q'ty packaging
B	-	Main Body B	1	-
1	-	Take-Out Slider Unit	1	-
2	ZZM00099	Plus Countersunk Head Screw M2.6*4 (10pcs)	8	1
3	※3 FR30SET	Exchange Kit M3.0	Each Nominal	1
	※3 FR35SET	Exchange Kit M3.5		1
	※3 FR40SET	Exchange Kit M4.0		1
	※3 FR50SET	Exchange Kit M5.0		1
	※3 FR60SET	Exchange Kit M6.0		1
4	NJ00077#01	Escaper Unit(C) M3.0:F30	Each Nominal	1
	NJ00077#02	Escaper Unit(C) M3.5:F35		1
	NJ00077#03	Escaper Unit(C) M4.0:F40		1
	NJ00077#04	Escaper Unit(C) M5.0:F50		1
	NJ00077#05	Escaper Unit(C) M6.0:F60		1
5	NJ06621	Washer	2	1
6	ZZM00068	Pan Head Screw PW,SW M2.6*8 Ni (10pcs)	2	1
7	NJ06588#02	Extension Spring	1	1
8	NJ06640	FM Escaper Motor (With Harness)(C)	1	1
	※2 NJ09782#08	Escaper Motor (With Harness)	1	1
9	NSR08621	Light Receiver Slit Plate	1	1
10	NJ09782#02	Passing Sensor (With Harness)	1	1
11	ZZM00029	Pan Head Screw PW,SW M2.6*6 (10pcs)	4	1
12	ZZM00159	Plus Truss Head Screw M2.6*3 Ni (10pcs)	2	1
13	NJ09781#03	Passing Sensor Junction Cable	1	1
14	NJ09781#07	Escaper Motor Junction Cable	1	1
15	ZPV00001#08	Main Circuit Board For FM-FME	1	1
16	CS-9	Coated Clip(10pcs)	2	1
17	ZZM00028	Pan Head Screw PW,SW M2.6*5 (10pcs)	1	1
18	NJ00046	DC Jack Assy	1	1
19	NJ09782#05	POWER Plug (With Harness)	1	1
20	NJ09781#09	Signal Harness	1	1
21	TFM00114	Right Side Cover	1	1
	※6 NJ06617	Right Side Cover	1	1
22	ZZM00161	Plus Truss Head Screw M2.6*5 Ni (10pcs)	20	1

23		NJ00083	Rear Cover Assy(Model Mix ver)	1	1
	※2	NJ00075#01	Rear Cover Assy	1	1
24		TFM00116	Left Side Cover	1	1
	※6	NJ06616	Left Side Cover	1	1
25		ZZM00442	Toothed Lock Washer M2.6 Ni (10pcs)	4	1
26		NJ08112#01	Front Cover Assy (With Sticker)	1	1
27		NJ06074#02	Counter Assy	1	1
28		NJ09782#04	Power Switch (With Harness)	1	1
29		NJ00074#01	Front Main Cover Assy (With Sticker)	1	1
30		ZZM00588	Stainless Spacer	2	1
31		NJ09782#01	Passing Sensor (With Harness)	1	1
32		NJ01042#01	Extension Spring	1	1
33		SK-156	Rubber Foot	2	1
34		NJ08015	Upper Cover	1	1
	※6	NJ66506	Upper Cover	1	1

※1 Please contact us for further details.

※2 Before Sept. 2017 (for 5 years).

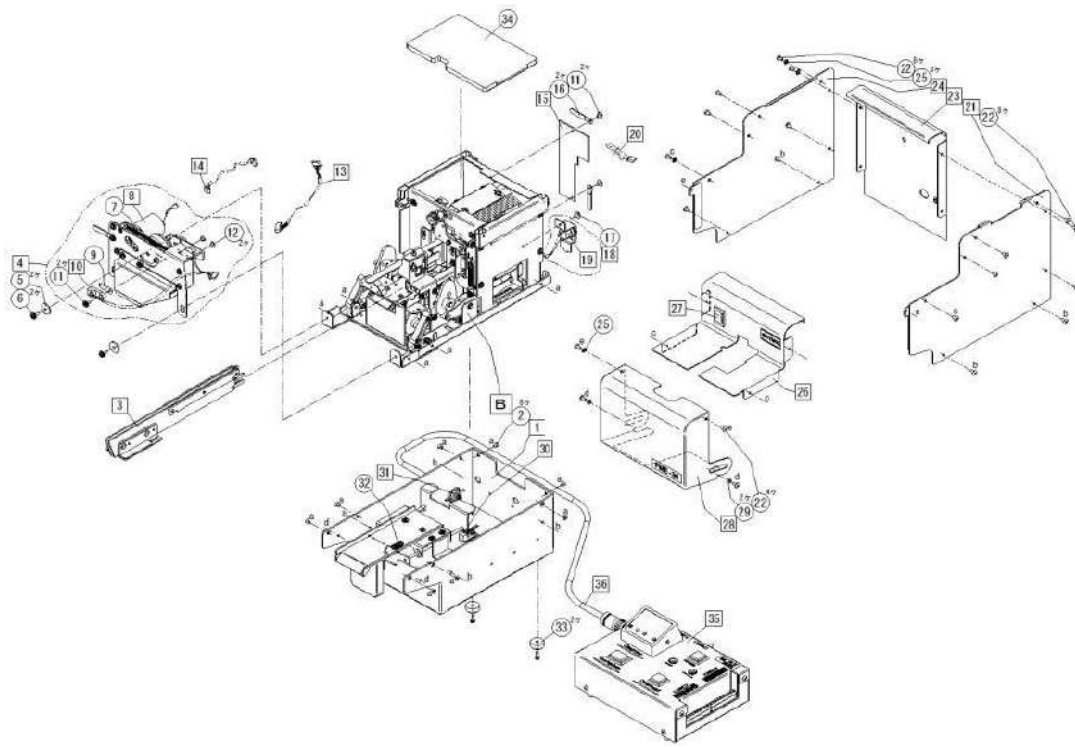
※3 Breakdown of the Exchange Kit (Rail, Passing Plate, Escaper Unit).

※6 The S/N starts with 3 or earlier. (for 5 years).

A

《FME-36**》

A



No.	Part Number	Name of Part	Q'ty used per set	Minimum q'ty packaging
B	-	Main Body B	1	-
1	-	Take-Out Slider Unit	1	-
2	ZZM00099	Plus Countersunk Head Screw M2.6*4 (10pcs)	8	1
3	※3 FR30SET	Exchange Kit M3.0	Each Nominal	1
	※3 FR35SET	Exchange Kit M3.5		1
	※3 FR40SET	Exchange Kit M4.0		1
	※3 FR50SET	Exchange Kit M5.0		1
	※3 FR60SET	Exchange Kit M6.0		1
4	NJ00077#01	Escaper Unit(C) M3.0:F30	Each Nominal	1
	NJ00077#02	Escaper Unit(C) M3.5:F35		1
	NJ00077#03	Escaper Unit(C) M4.0:F40		1
	NJ00077#04	Escaper Unit(C) M5.0:F50		1
	NJ00077#05	Escaper Unit(C) M6.0:F60		1
5	NJ06621	Washer	2	1
6	ZZM00068	Pan Head Screw PW,SW M2.6*8 Ni (10pcs)	2	1
7	NJ06588#02	Extension Spring	1	1
8	NJ06640	FM Escaper Motor (With Harness)(C)	1	1
	※2 NJ09782#08	Escaper Motor (With Harness)	1	1
9	NSR08621	Light Receiver Slit Plate	1	1
10	NJ09782#02	Passing Sensor (With Harness)	1	1
11	ZZM00029	Pan Head Screw PW,SW M2.6*6 (10pcs)	4	1
12	ZZM00159	Plus Truss Head Screw M2.6*3 Ni (10pcs)	2	1
13	NJ09781#03	Passing Sensor Junction Cable	1	1
14	NJ09781#07	Escaper Motor Junction Cable	1	1
15	ZPV0001#08	Main Circuit Board For FM-FME	1	1
16	CS-9	Coated Clip(10pcs)	2	1
17	ZZM00028	Pan Head Screw PW,SW M2.6*5 (10pcs)	1	1
18	NJ00046	DC Jack Assy	1	1
19	NJ09782#05	POWER Plug (With Harness)	1	1
20	NJ09781#09	Signal Harness	1	1
21	TFM00114	Right Side Cover	1	1
	※6 NJ06617	Right Side Cover	1	1
22	ZZM00161	Plus Truss Head Screw M2.6*5 Ni (10pcs)	20	1

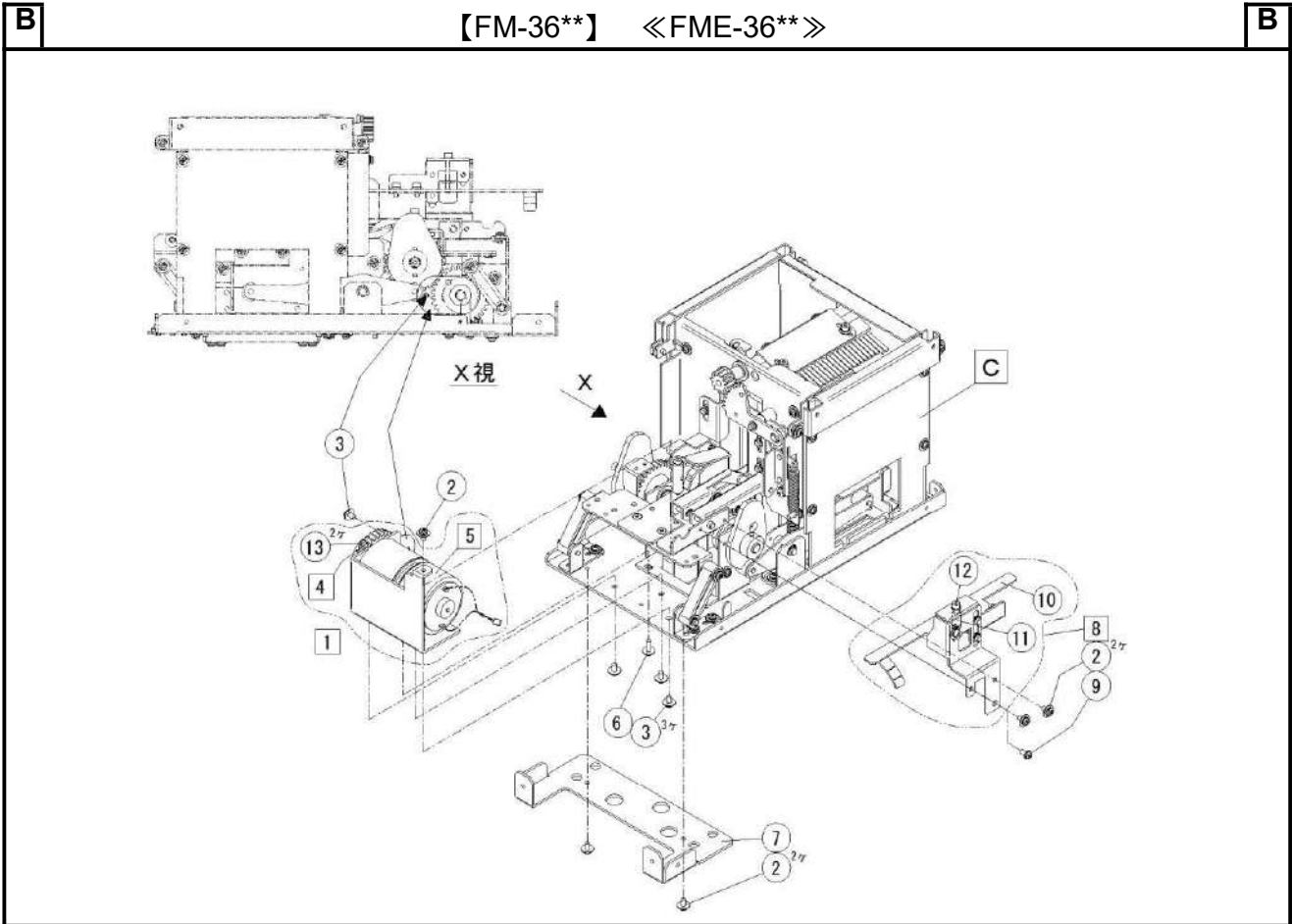
23		NJ00083	Rear Cover Assy(Model Mix ver)	1	1
	※2	NJ00075#01	Rear Cover Assy	1	1
24		TFM00116	Left Side Cover	1	1
	※6	NJ06616	Left Side Cover	1	1
25		ZZM00442	Toothed Lock Washer M2.6 Ni (10pcs)	4	1
26		NJ08112#02	Front Cover Assy (With Sticker)	1	1
27		NJ09782#04	Power Switch (With Harness)	1	1
28		NJ00074#02	Front Main Cover Assy (With Sticker)	1	1
29		ZZM00588	Stainless Spacer	2	1
30		NJ09782#01	Passing Sensor (With Harness)	1	1
31		NEX09011#3-c	Interface Cable	1	1
32		NJ01042#01	Extension Spring	1	1
33		SK-156	Rubber Foot	2	1
34		NJ08015	Upper Cover	1	1
	※6	NJ66506	Upper Cover	1	1
35		NEX00001	NEX-PLC	1	1
36		NEX09012#3-b	Interface Cable	1	1

※1 Please contact us for further details.

※2 Before Sept. 2017 (for 5 years).

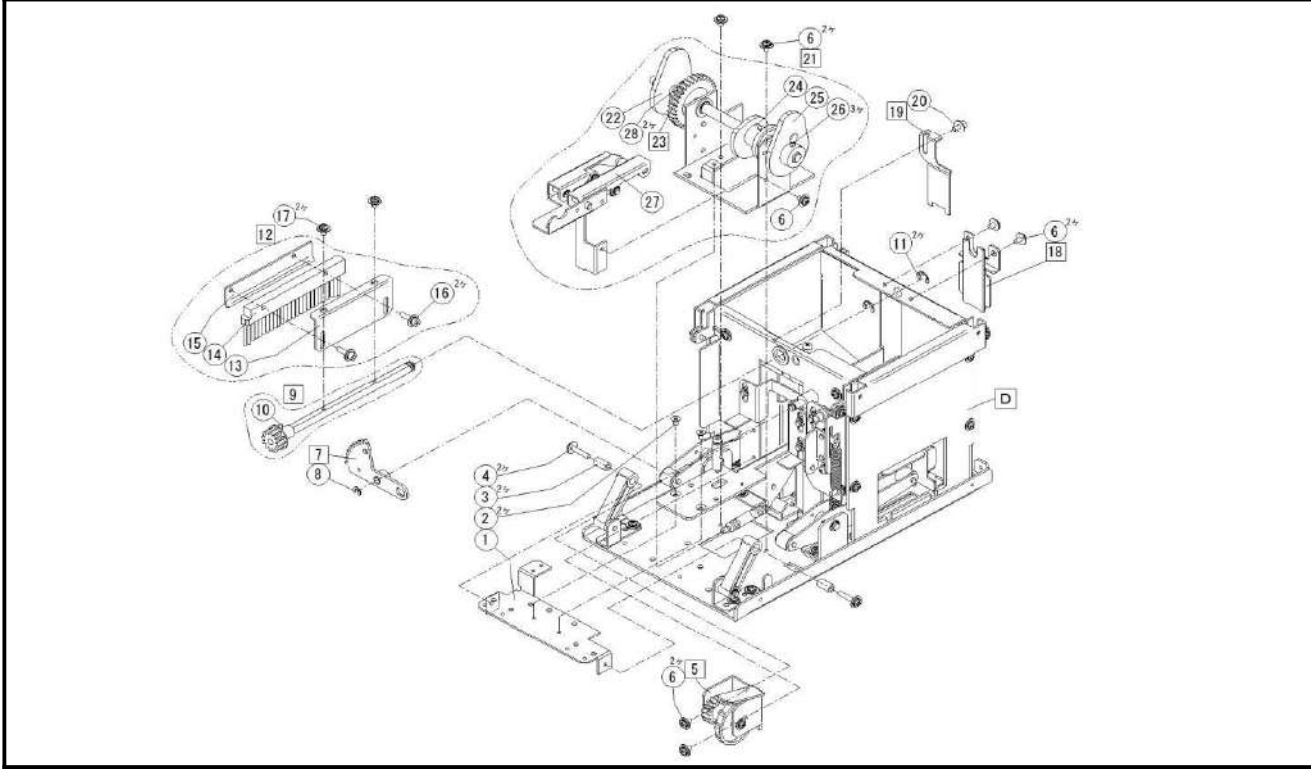
※3 Breakdown of the Exchange Kit(Rail,Passing Plate,Escaper Unit).

※6 The S/N starts with 3 or earlier.(for 5 years).



No.	Part Number	Name of Part	Q'ty used per set	Minimum q'ty packaging
C	-	Main Body C	1	-
1	NJ04502	Driving Motor Assy	1	1
2	ZZM00028	Pan Head Screw PW,SW M2.6*5 (10pcs)	5	1
		Pan Head Screw PW,SW M2.6*5		
4	NJ04013	Driving Gear #1	1	1
5	NJ09782#10	Main Motor (With Harness)	1	1
		Pan Head Screw PW,SW M2.6*8		
7	NJ06550	Extension Base	1	1
8	NJ05030	Bit Guide Assy	1	1
9	ZZM00074	Pan Head Screw SW M2.6*5 (10pcs)	1	1
10	TFM00054	Screw Guide	1	1
11	TPO00809	Compression Spring	1	1
12	ZZM00188	Hex. Socket Head Bolt M2.6*20 (10pcs)	1	1
13	ZZM00388	Hex. Socket Head Screw M4*8 Loosening Prevention (10pcs)	2	1

C 【FM-36**】 <<FME-36**>> C



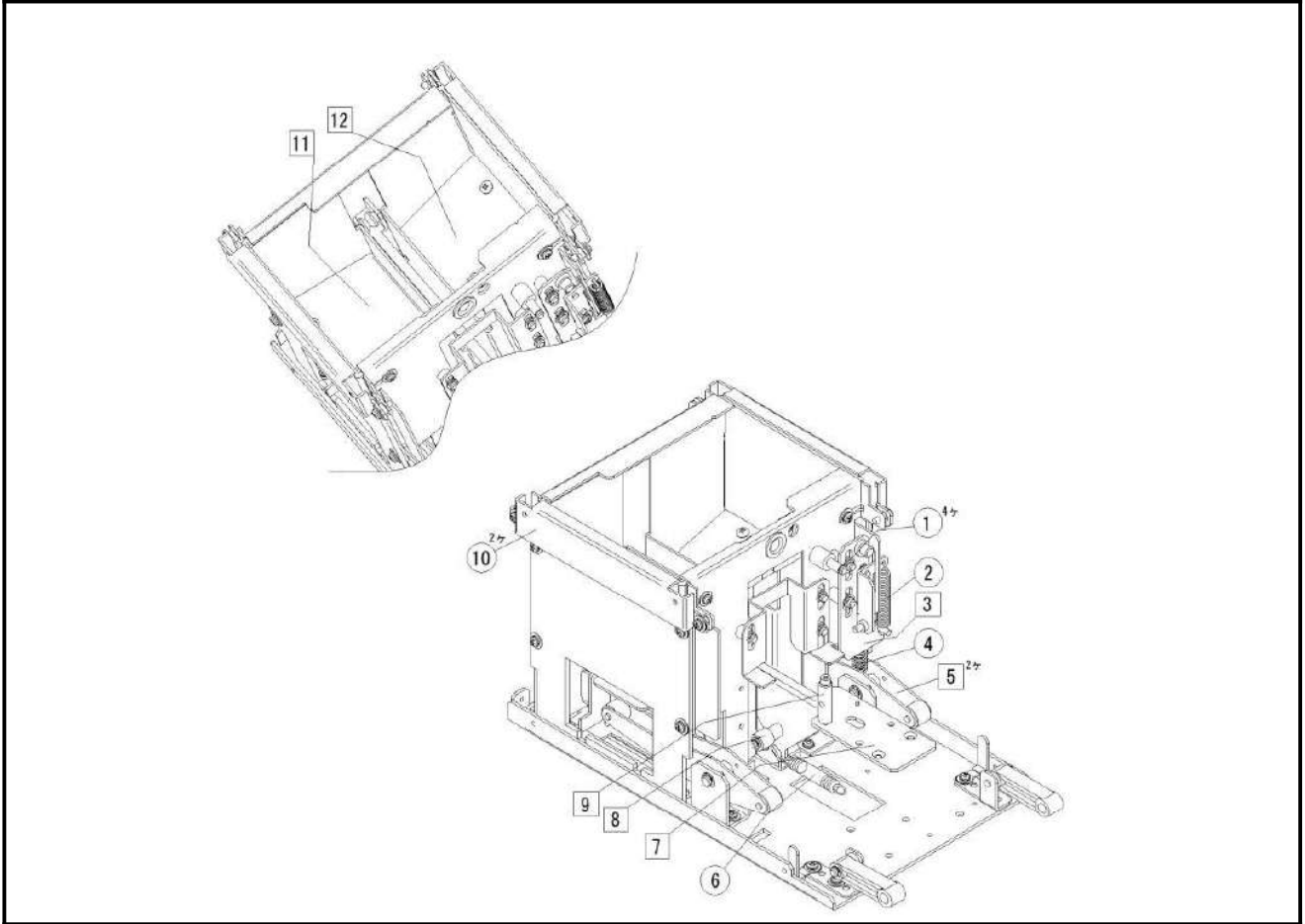
No.	Part Number	Name of Part	Q'ty used per set	Minimum q'ty packaging
D	-	Main Body D	1	-
1	NJ03034	Rail Holder #2	1	1
2	ZZM00099	Plus Countersunk Head Screw M2.6*4 (10pcs)	2	1
3	ZZM00584	Brass Spacer	2	1
4	ZZM00033	Pan Head Screw PW,SW M2.6*14 (10pcs)	2	1
5	NJ02001#03	Vibration Cam Assy	1	1
6	ZZM00028	Pan Head Screw PW,SW M2.6*5 (10pcs)	7	1
7	NJ11053	Brush Driving Gear	1	1
	※2 TEK30410	Brush Driving Gear	1	1
8	ZEK000510	E-Type Snap Ring E-3 (10pcs)	1	1
9	NJ02004	Brush Driving Shaft Assy	1	1
10	ZZM00557	Spring Pin 2*16 (10pcs)	1	1
11	ZZM00512	E-Type Snap Ring E-5 (10pcs)	2	1
12	NJB0040	BRUSH Assy	1	1
13	NJ02038	Brush Bracket #1	1	1
14	NJ02039#01	Brush	1	1
15	NJ11047	BRUSH BRACKET	1	1
16	ZZM01008	Hex. Socket Head Bolt PW,SW M2.6*10 (10pcs)	2	1
17	ZZM00067	Pan Head Screw PW,SW M2.6*5 Ni (10pcs)	2	1
18	NJ02043	Closing Plate: M5	1	1
19	NJ66504#01	Passing Plate #1 Assy M3.0:W3630	Each Nominal	1
	NJ66504#02	Passing Plate #1 Assy M3.5:W3635		1
	NJ66504#03	Passing Plate #1 Assy M4.0:W3640		1
	NJ66504#04	Passing Plate #1 Assy M5.0:W3650		1
	NJ66504#05	Passing Plate #1 Assy M6.0:W3660		1
20	ZZM00261	Hex. Socket Head Bolt PW,SW M2.6*5 (10pcs)	1	1
21	NJ04000#02	Driving Shaft Bracket Assy	1	1
22	NJ04014	Driving Cam - Left	1	1
23	NJ04013	Driving Gear #1	1	1
24	NJ04016	Shutter Cam	1	1
25	NJ04015	Driving Cam - Right	1	1
26	ZZM00559	Spring Pin 2.5*16 (10pcs)	3	1
27	NJ04004	Brush Link Assy	1	1
28	ZZM00388	Hex. Socket Head Screw M4*8 Loosening Prevention (10pcs)	2	1

※2 Before Sept. 2017 (for 5 years).

D

【FM-36**】 <<FME-36**>>

D



No.	Part Number	Name of Part	Q'ty used per set	Minimum q'ty packaging
1	ZZM00628	Polvurethan Slider/STW-FT45/4.6X7.2Xt0.13 (10pcs)	4	1
2	NJ11044	TENSION SPRING	1	1
3	NJ11051	Slide Plate #1	1	1
	※2 NJ11036	SLIDE DRIVE PLATE1 CALKING	1	1
4	NJ02041#01	Extension Spring	1	1
5	NJ03002	Driving Link Plate Assy	2	1
6	NJ03055	Vibration Spring	1	1
7	NJ03007	Rail Holder #1 Assy	1	1
8	NJ03032	Vibration Roller	1	1
9	NJ03033	Fixing Bolt	1	1
10	NJ02042	Cover Bracket	2	1
11	NJB0010	HOPPER LEFT	1	1
12	NJB0020	HOPPER RIGHT	1	1

※2 Before Sept. 2017 (for 5 years).

ACCESSORIES

No.	Part Number	Name of Part	Q'ty used per set	Minimum q'ty packaging
1	UNI315-1510(PSE)	UNI315-1510 AC Adapter DC15V with PSE Cord	Anyone	1
	UI315-15(CCC)	UI315-15 AC Adapter DC15V with CCC Cord		1
	UI315-15(KC)	UI315-15 AC Adapter DC15V with KC Cord		1
	UNI315-1510(UL)	UNI315-1510 AC Adapter DC15V with UL Cord		1
	※4 UNI315-1510(CE)	UNI315-1510 AC Adapter DC15V with CE Cord		1
2	WRENCH-M2.0	Allen Wrench	1	1
3	NSN08201	Driver	1	1
4	TPO21202	Ground Wire	1	1
5	SSIMMA01	Operation Manual SSI-M Series	1	1
	SSIRMA01	Operation Manual SSI-R Series	1	1

※4 The AC adapter uses CE certified products.

※5 Before Sept. 2017 (Please download from our homepage).

