



Parts list & exploded view

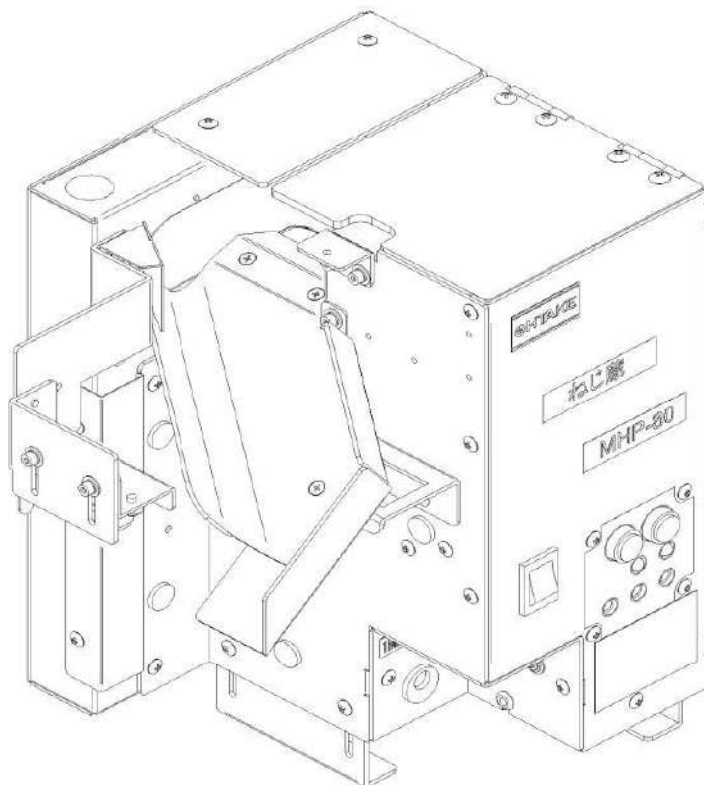
OHTAKE**MHP****OHTAKE automatic screw hopper NEJIKURA****MHP-80S / MHP-80J / MHP-80F / MHP-80M series**

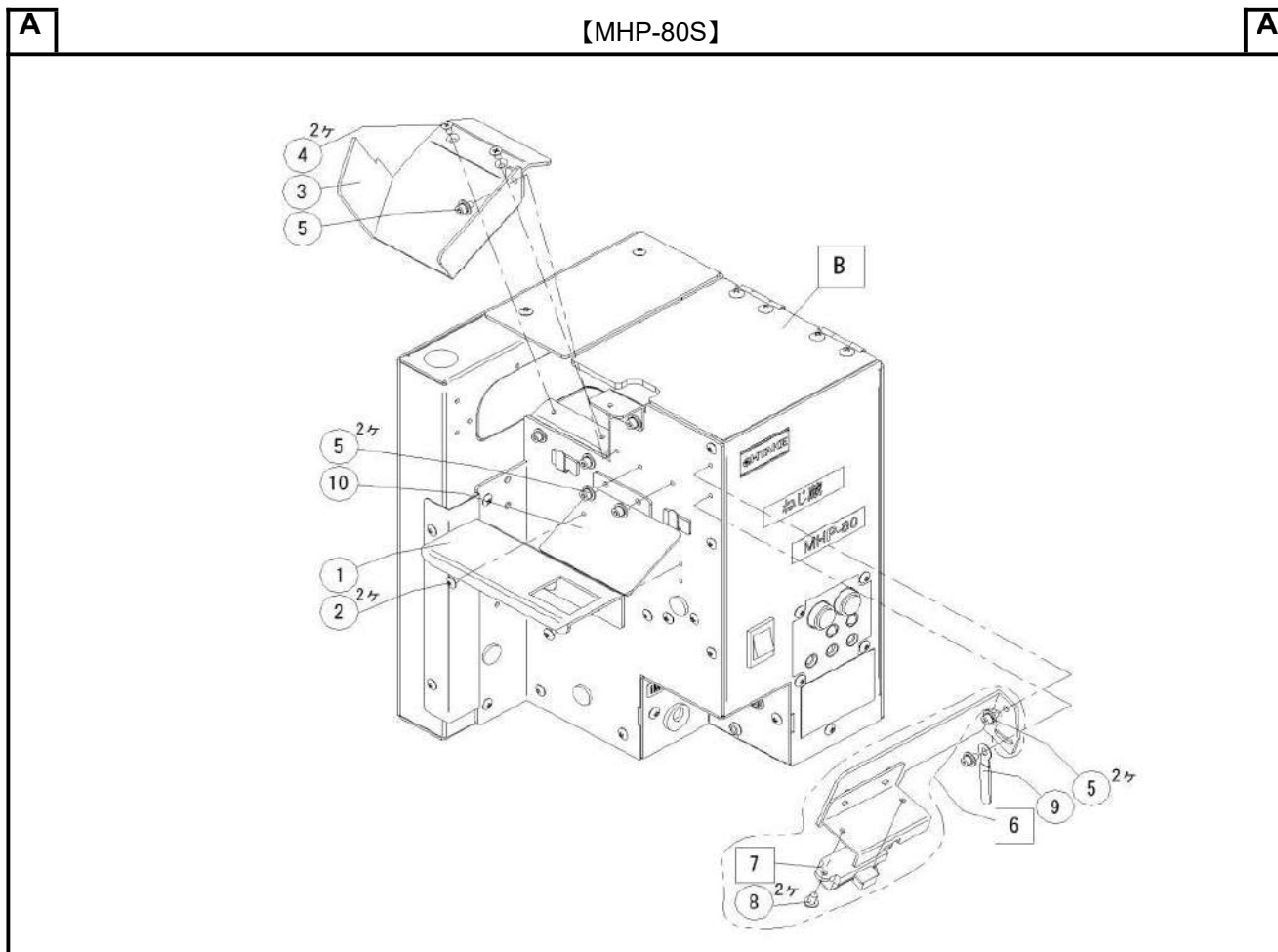
© DOGA DOC.60469.10/22

IMPORTANT

- Parts would be delivered in the minimum order quantity base.
- Some components are supplied only as assemblies.
- The components assembly might be reviewed without any notice.
- The minimum order quantities are indicated in the item descriptions.
- Any variations and upgrades in the designs of the product change without notice.

OVERVIEW



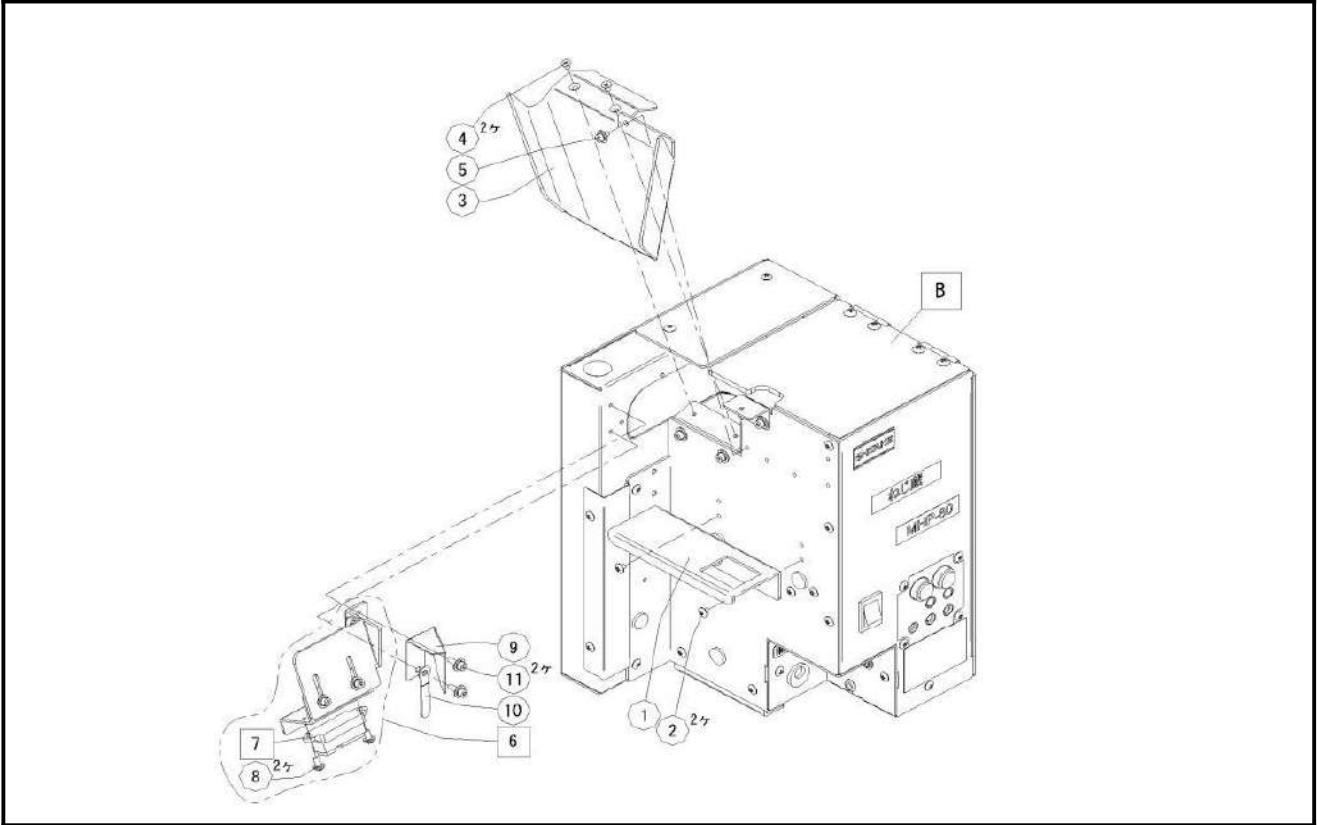


No.	Part Number	Name of Part	Q'ty used per set	Minimum q'ty packaging
B	-	Main Body Cover	1	-
1	MHP01011	Holding Bracket	1	1
2	ZZM00159	Plus Truss Head Screw M2.6*3 Ni (10pcs)	2	1
3	MHP02002	Output Port(Left:NSB)	1	1
4	ZZM00117	Plus Countersunk Head Screw M2.6*4 Ni (10pcs)	2	1
5	ZZM00261	Hex. Socket Head Bolt PW,SW M2.6*5 (10pcs)	5	1
6	MHP01113	Sensor Bracket Assy:NSB	1	1
7	GP2Y0A41SK0F	Infrared Proximity Sensor	1	1
8	ZZM00062	Pan Head Screw PW(s),SW M3*6 (10pcs)	2	1
9	CS-9	Coated Clip(10pcs)	1	1
10	MHP02011	NSB Screw Cover	1	1

A

【MHP-80J】

A

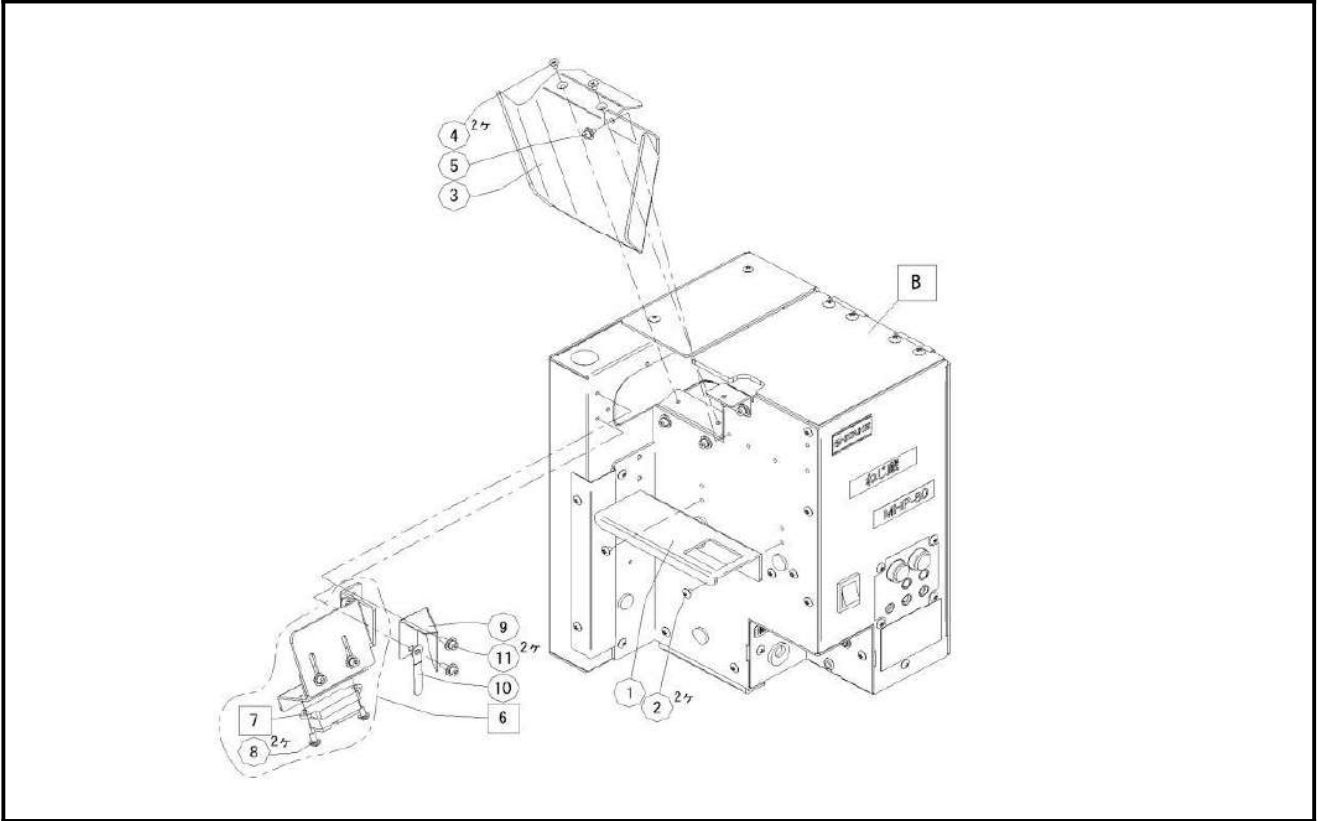


No.	Part Number	Name of Part	Q'ty used per set	Minimum q'ty packaging
B	-	Main Body Cover	1	-
1	MHP01011	Holding Bracket	1	1
2	ZZM00159	Plus Truss Head Screw M2.6*3 Ni (10pcs)	2	1
3	MHP02001	Output Port(Right:NJ)	1	1
4	ZZM00117	Plus Countersunk Head Screw M2.6*4 Ni (10pcs)	2	1
5	ZZM00261	Hex. Socket Head Bolt PW,SW M2.6*5 (10pcs)	1	1
6	MHP01112	Sensor Bracket Assy:NJ	1	1
7	GP2Y0A41SK0F	Infrared Proximity Sensor	1	1
8	ZZM00062	Pan Head Screw PW(s),SW M3*6 (10pcs)	2	1
9	MHP02014	Gap Cover	1	1
10	CS-9	Coated Clip(10pcs)	1	1
11	ZZM00289	Hex. Socket Head Bolt PW,SW M2.6*8 (10pcs)	2	1

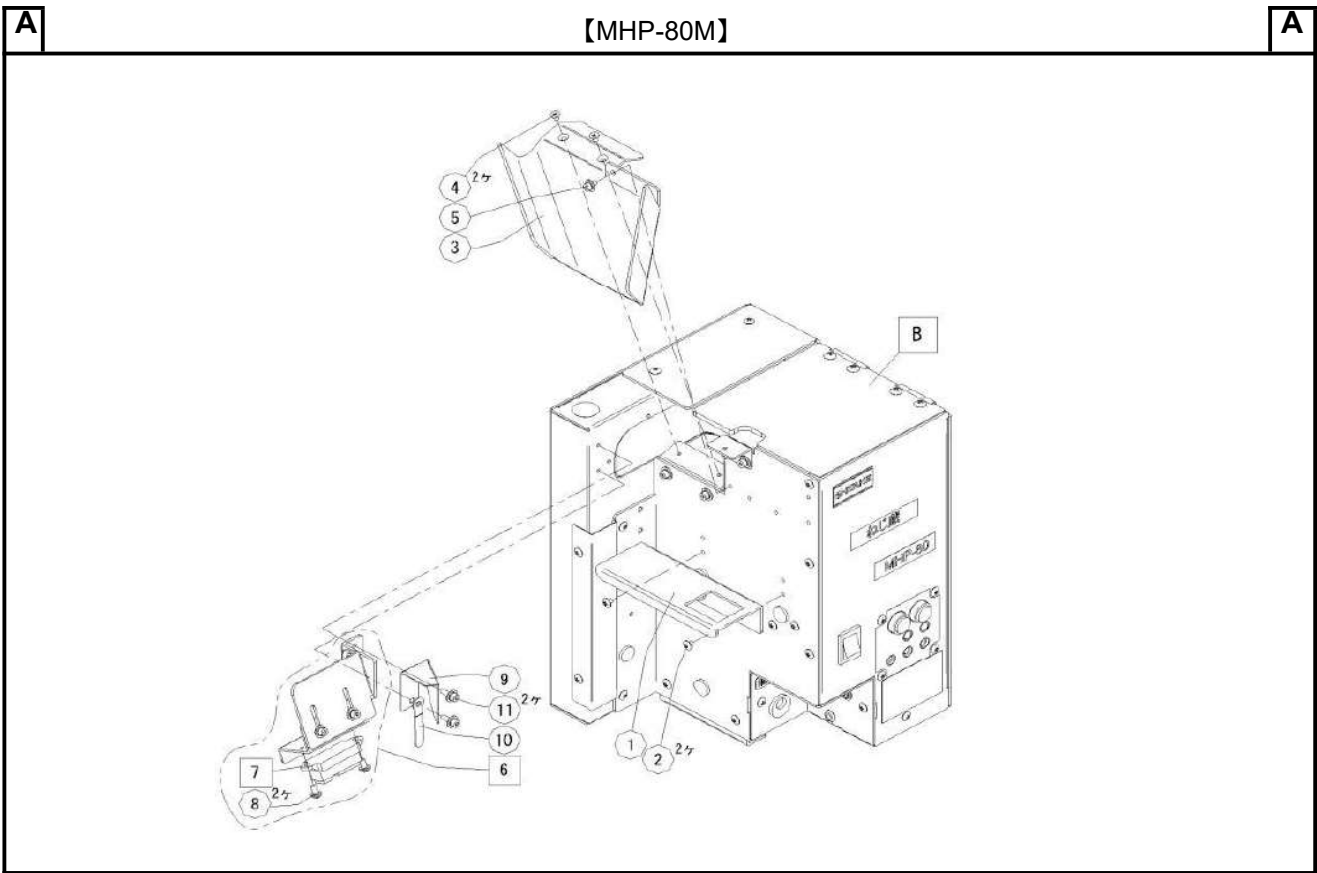
A

【MHP-80F】

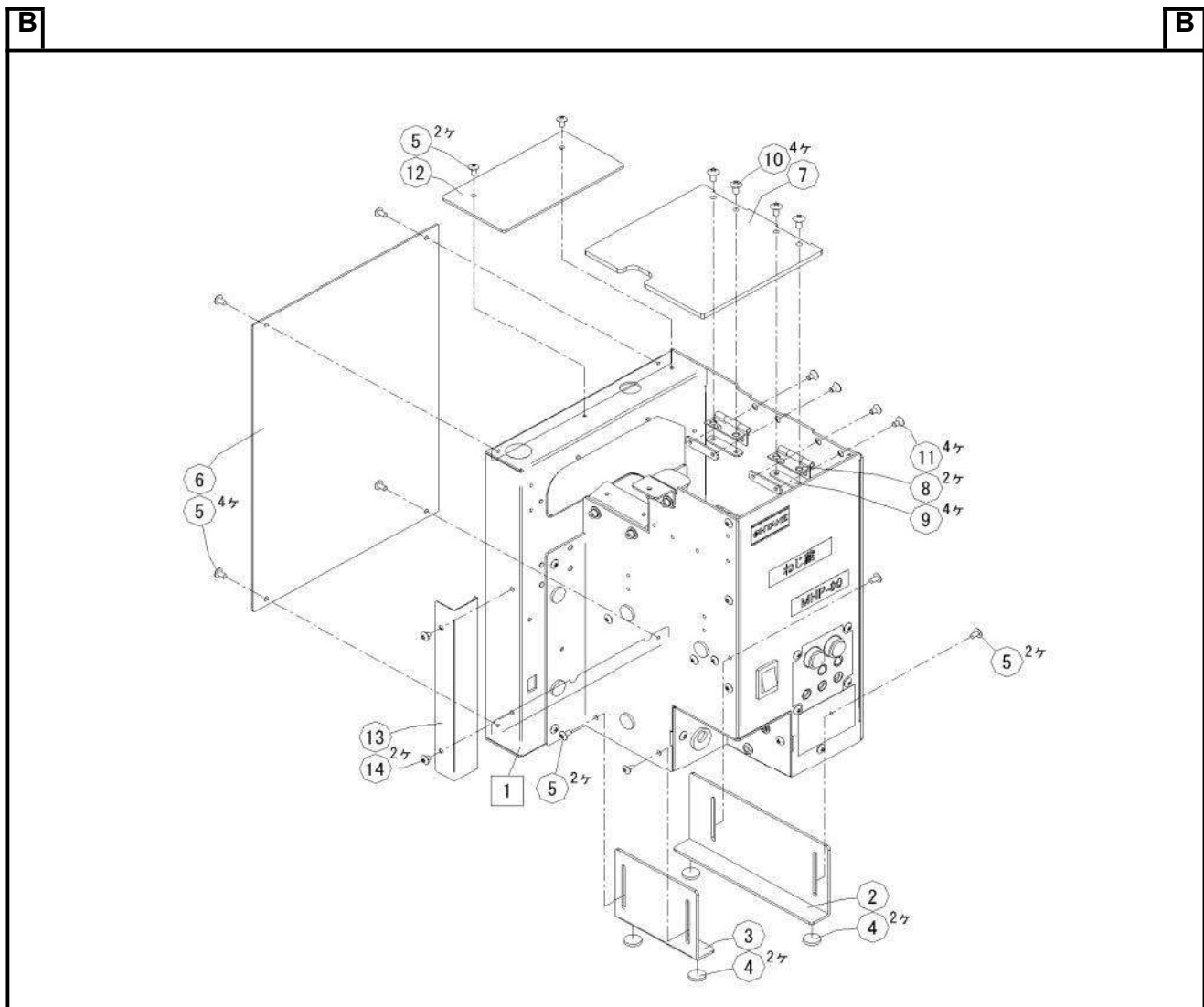
A



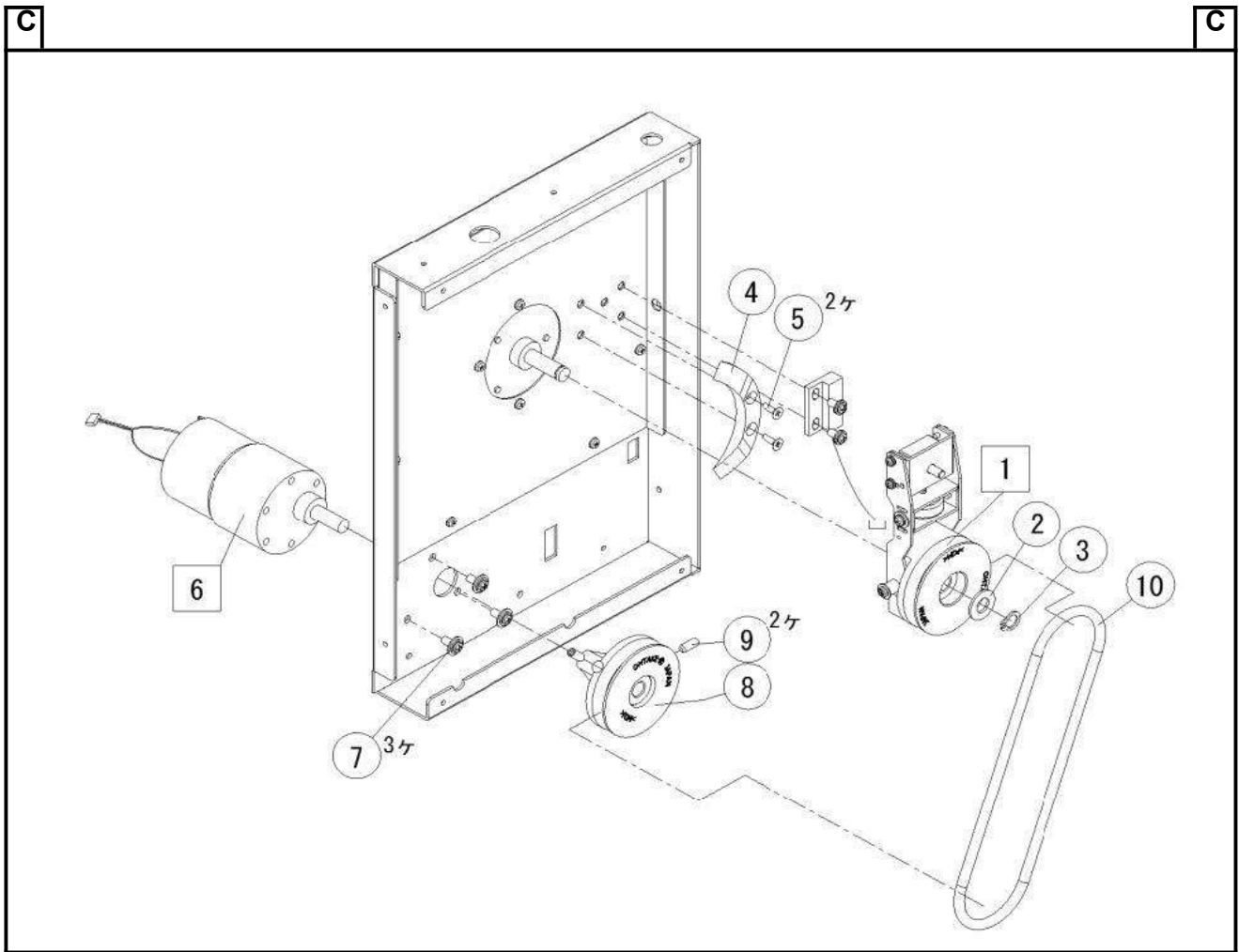
No.	Part Number	Name of Part	Q'ty used per set	Minimum q'ty packaging
B	-	Main Body Cover	1	-
1	MHP01011	Holding Bracket	1	1
2	ZZM00159	Plus Truss Head Screw M2.6*3 Ni (10pcs)	2	1
3	MHP02001	Output Port(Right:NJ)	1	1
4	ZZM00117	Plus Countersunk Head Screw M2.6*4 Ni (10pcs)	2	1
5	ZZM00261	Hex. Socket Head Bolt PW,SW M2.6*5 (10pcs)	1	1
6	MHP01112	Sensor Bracket Assy:NJ	1	1
7	GP2Y0A41SK0F	Infrared Proximity Sensor	1	1
8	ZZM00062	Pan Head Screw PW(s),SW M3*6 (10pcs)	2	1
9	MHP02014	Gap Cover	1	1
10	CS-9	Coated Clip(10pcs)	1	1
11	ZZM00289	Hex. Socket Head Bolt PW,SW M2.6*8 (10pcs)	2	1
12	MHP01118	FM Stand	1	1
13	ZZM00266	Hex. Socket Head Bolt PW,SW M4*8 (10pcs)	4	1



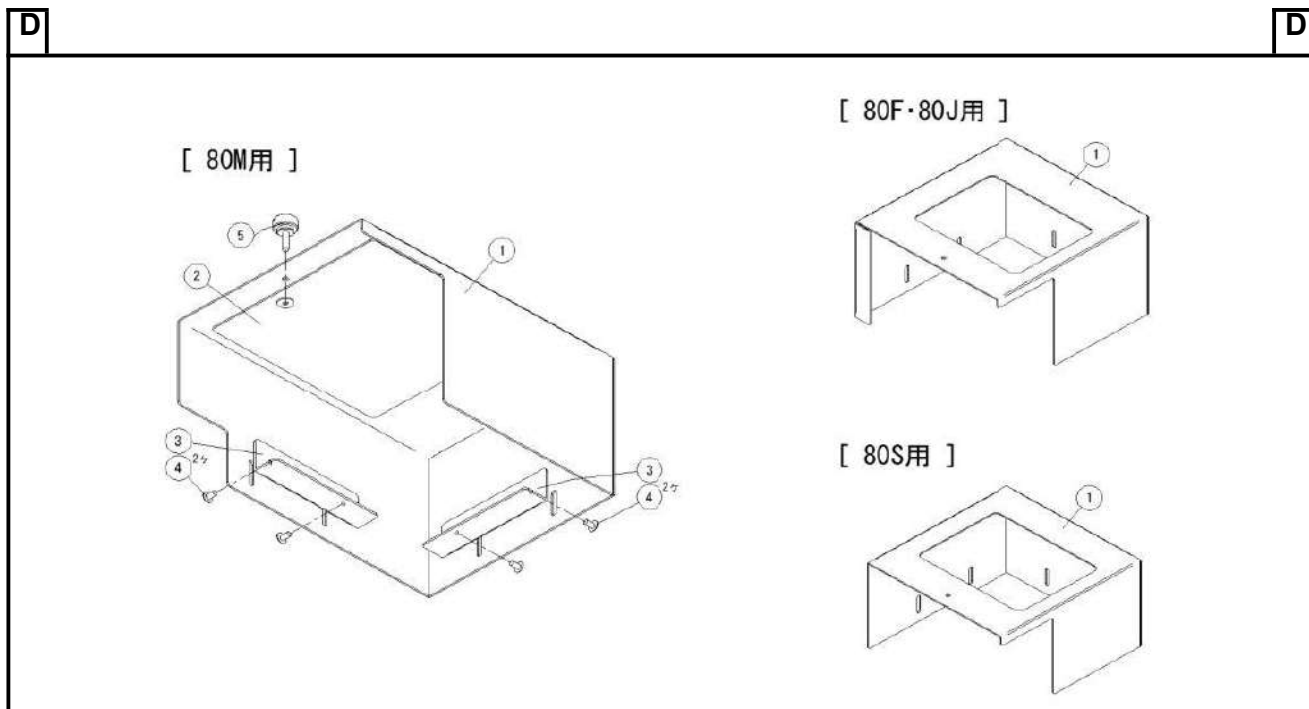
No.	Part Number	Name of Part	Q'ty used per set	Minimum q'ty packaging
B	-	Main Body Cover	1	-
1	MHP01011	Holding Bracket	1	1
2	ZZM00159	Plus Truss Head Screw M2.6*3 Ni (10pcs)	2	1
3	MHP01111	Output Port Assy:OM	1	1
4	ZZM00117	Plus Countersunk Head Screw M2.6*4 Ni (10pcs)	2	1
5	ZZM00261	Hex. Socket Head Bolt PW,SW M2.6*5 (10pcs)	1	1
6	MHP01110	Sensor Bracket Assy:OM	1	1
7	GP2Y0A41SK0	Infrared Proximity Sensor	1	1
8	ZZM00062	Pan Head Screw PW(s),SW M3*6 (10pcs)	2	1
9	MHP02014	Gap Cover	1	1
10	CS-9	Coated Clip(10pcs)	1	1
11	ZZM00289	Hex. Socket Head Bolt PW,SW M2.6*8 (10pcs)	2	1



No.	Part Number	Name of Part	Q'ty used per set	Minimum q'ty packaging
1	-	Main Body	1	-
2	MHP01019	Back Adjuster (80J・80M・80S)	1	1
3	MHP01020	Front Adjuster (80J・80M・80S)	1	1
4	TM-182-816-10	Urethane Roll Stock	4	1
5	ZZM00161	Plus Truss Head Screw M2.6*5 Ni (10pcs)	10	1
6	MHP01015	Left Cover	1	1
7	MHP01016	Upper Cover	1	1
8	TH-TM-112	Hinge	2	1
9	MHP01018	Hinge Fixing Plate	4	1
10	ZZM00144	Plus Truss Head Screw M3*6 (10pcs)	4	1
11	ZZM00623	Plus Countersunk Head Screw M3*5 Ni (10pcs)	4	1
12	MHP01028	Cover Plate	1	1
13	MHP02015	Harness Cover	1	1
14	ZZM00159	Plus Truss Head Screw M2.6*3 Ni (10pcs)	2	1



No.	Part Number	Name of Part	Q'ty used per set	Minimum q'ty packaging
1	MHP01101	Magnet Arm Unit	1	1
2	ZZM00397	Plain Washer M6 (10pcs)	1	1
3	ZZM00536	C-Type Snap Ring Nominal 6 (10pcs)	1	1
4	TPO00461	Separating Rail	1	1
5	ZZM00102	Plus Countersunk Head Screw M2.6*8 (10pcs)	2	1
6	MHP09013#05	Main Motor (With Harness)	1	1
7	ZZM00620	Pan Head Screw PW,SW M3*7 Loosening Prevention (10pcs)	3	1
8	TPO00509	Driving Pulley	1	1
9	ZZM00388	Hex. Socket Head Screw M4*8	2	1
10	MHP01029	Drive Belt	1	1



No.	Part Number	Name of Part	Q'ty used per set	Minimum q'ty packaging
1	MHP03003	Hopper Cover (OM) (80M)	Anyone	1
	MHP03001	Hopper Cover (NJ) (80F・80J)		1
	MHP03002	Hopper Cover (NSB) (80S)		1
2	MHP03005	Hopper Cover Window	1	1
3	MHP03004	Cover Holding Plate	2	1
4	ZZM00161	Plus Truss Head Screw M2.6*5 Ni (10pcs)	4	1
5	TL-233-2	Grip Screw	1	1

ACCESSORIES

No.	Part Number	Name of Part	Q'ty used per set	Minimum q'ty packaging
D	MHP01117	Screw Retaining Cover :OM (80M)	Anyone	1
	MHP01115	Screw Retaining Cover :NJ (80F・80J)		1
	MHP01116	Screw Retaining Cover :NSB (80S)		1
1	UNI315-1510(PS)	UNI315-1510 AC Adapter DC15V with PSE Cord	Anyone	1
	UI315-15(CCC)	UI315-15 AC Adapter DC15V with CCC Cord		1
	UI315-15(KC)	UI315-15 AC Adapter DC15V with KC Cord		1
	UNI315-1510(UL)	UNI315-1510 AC Adapter DC15V with UL Cord		1
	※1 UNI315-1510(CE)	UNI315-1510 AC Adapter DC15V with CE Cord		1
2	NSN08201	Driver	1	1
3	TPO21202	Ground Wire	1	1
4	MHPMA01	Operation Manual MHP Series	1	1

※1 The AC adapter uses CE certified products.

