



GY Series

XT-35D

A large, light gray, stylized 'D' shape is positioned on the left side of the page. It has a 3D effect with a shadow and a gradient, giving it a metallic appearance. The 'D' is composed of a vertical bar on the left and a semi-circular arc on the right.

FIRMWARE UPGRADE MANUAL



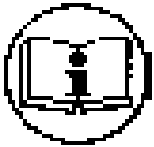
IMPORTANT

The tool delivered with this manual may be modified for specific needs.

In that case, please give us the tool code number written on our shipping note or the approximate tool delivery date when you will place an order for a new similar tool or for spare parts.

In that way, you will be sure to get the required and/or spare part.

WARNING



This information has to be kept in a location known to all users.



Each operator has to read carefully this manual before installing, using, and mending the product.

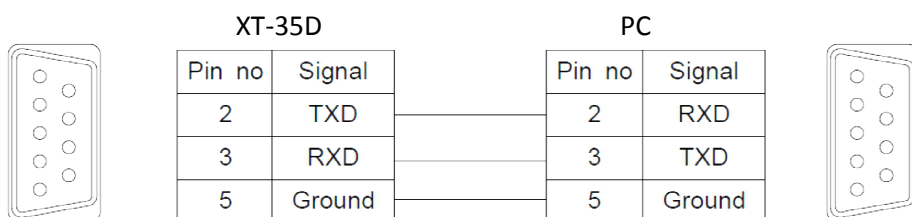
Be sure that the operator has understood using recommendations and the meaning of signs put on the product.

Most accidents could be avoided respecting this Manual Instructions. As a matter of fact, they were created according to European laws and norms regarding products.

In each case, please respect and follow safety national norms. Do not take off nor damage the stickers or advice put on the product and above all the details imposed by the law.

1. Connection of controller and PC

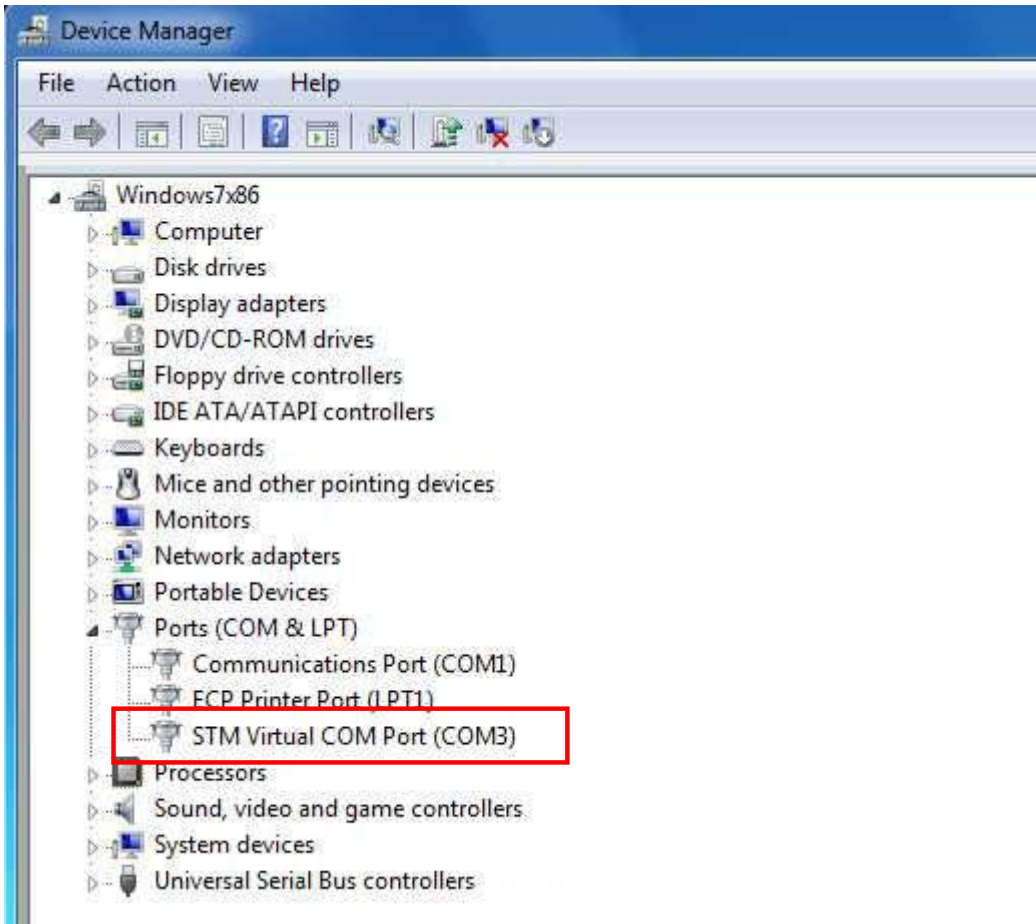
- ① At the back panel of YFC-35, check the current firmware version.
- ② Turn the power OFF of the controller and select "UPGRADE" on the firmware upgrade switch.
- ③ Connect the PC to the controller with RS232C direct cable shown as below.
- ④ Turn the power ON of the controller



2. Software (Flash Loader Demonstrator) installation

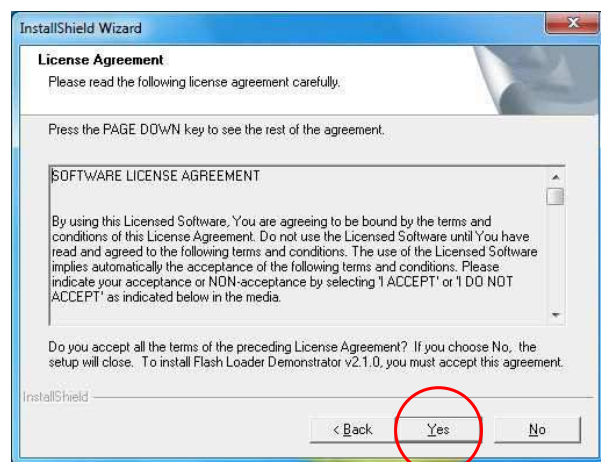
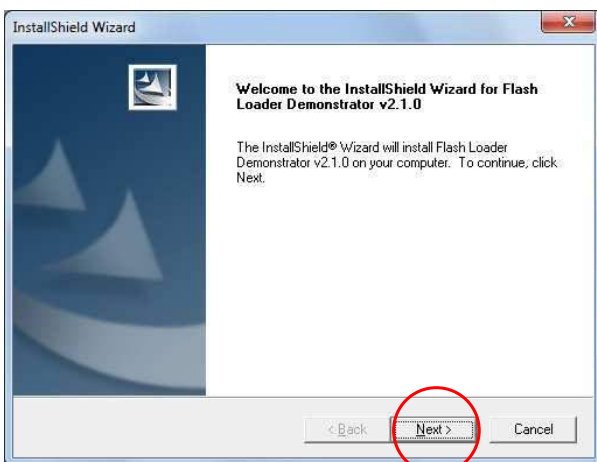
2.1 RS232C COM port on your PC

Find out "STM Virtual COM Port" number in the device manager on your PC.



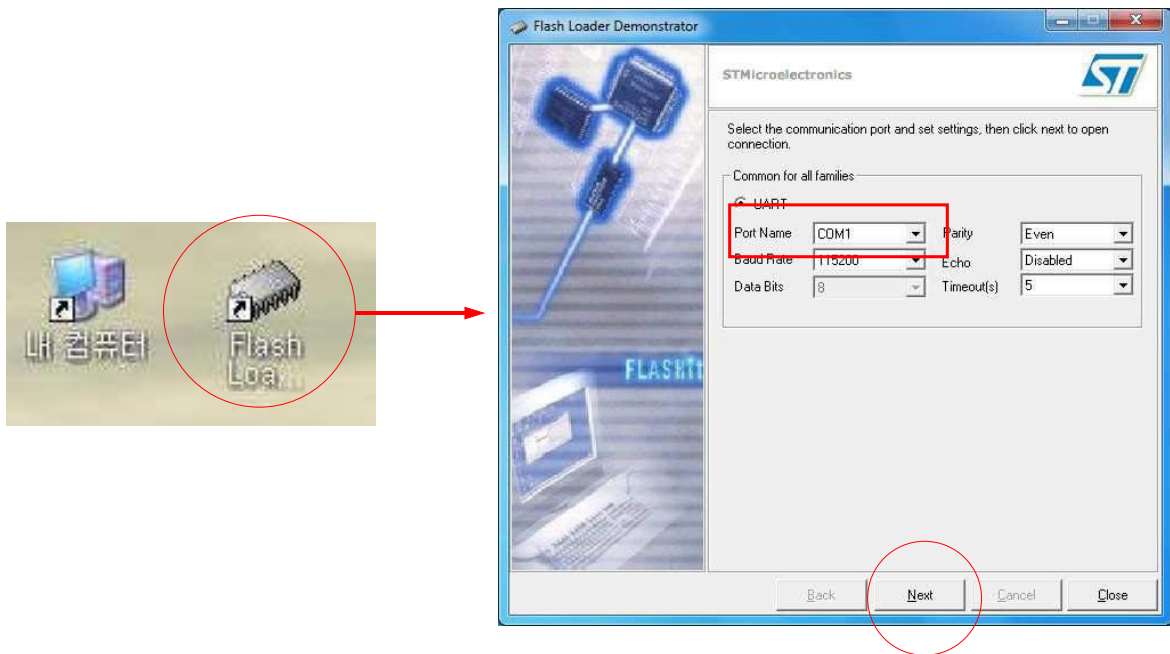
2.2 Set up the software file on your PC

Software file name : Flash_Loader_Demonstrator_v2.4.0_Setup.exe

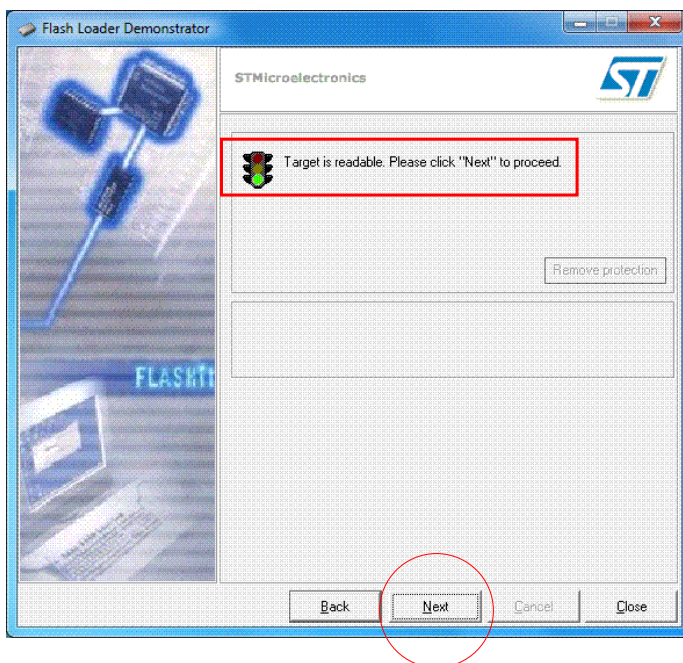


3. Firmware download

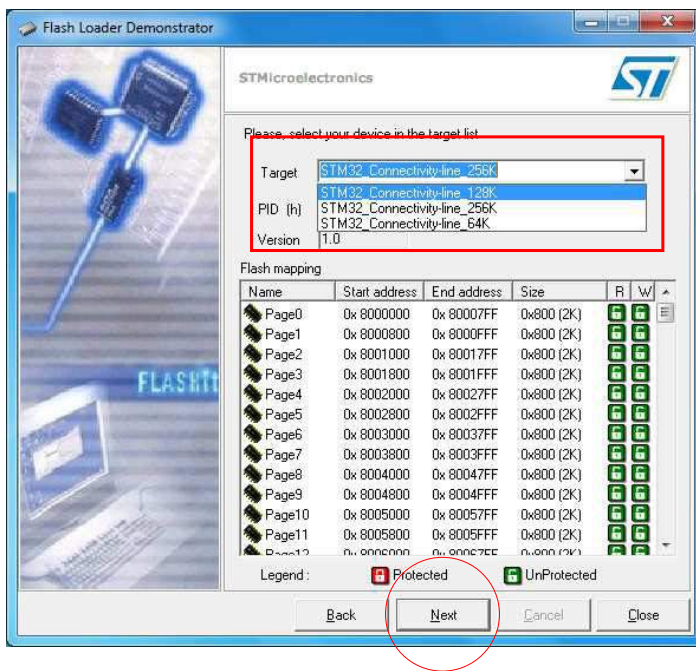
- ① Open "Flash Loader Demonstrator" by double click the icon.
And choose the COM port number.
Be sure that the RS232 cable should be connected before the controller power ON



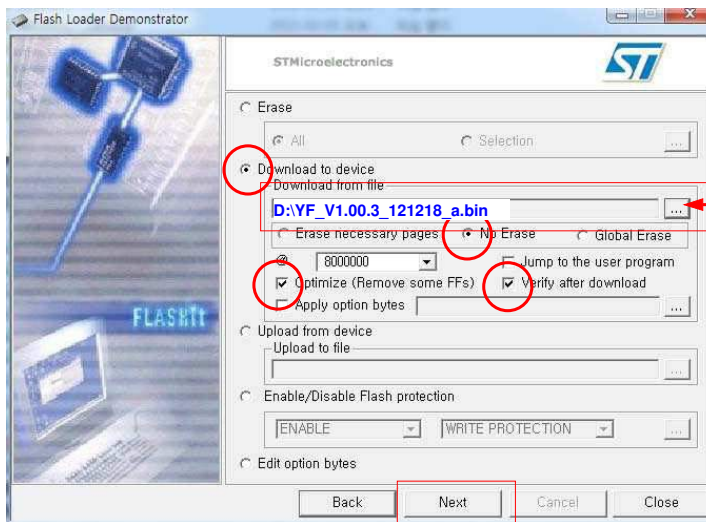
- ② Be sure of GREEN light to go next process.
If there is error, check the status of COM port, cable connection and controller power ON



③ Select the target "STM32_Med-density_64K", and click Next.



④ Select the "Download to device" and select and check the same as below. And open the firmware file which is downloaded on your PC

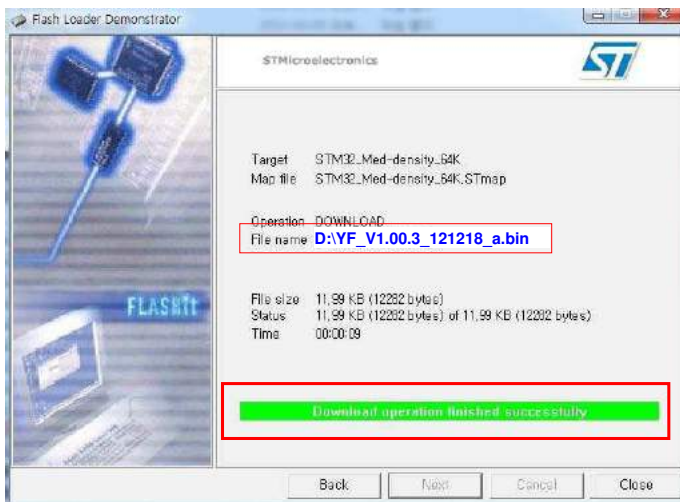


Click and open the firmware file on your PC

File name in example :
YF_V1.00.3_121218_a.bin

Then click Next.

⑤ Once it is successful, You will see " Download operation finished successfully



⑥ Turn the power of controller OFF and let the firmware upgrade switch to it's original position



⑦ Turn the power of the controller ON, then it is booted with new firmware.



8, avenue Gutenberg - CS 50510
78317 Maurepas Cedex - France
Tél. : 01 30 66 41 20 • Fax : 01 30 66 41 79
export@dogaf.fr

Nous travaillons constamment à l'amélioration de nos produits. De ce fait, les dimensions et indications portées dans cette brochure peuvent parfois ne pas correspondre aux dernières exécutions. De convention expresse, nos ventes sont faites sous bénéfice de réserve de propriété (les dispositions de la loi du 12/5/80 trouvent donc toute leur application).