



*SDC-24 Firmware
Upgrade Manual*

A large, stylized, light gray 'S' shape is positioned on the left side of the page, serving as a background element. It has a subtle gradient and a slight shadow effect.

INSTRUCTIONS MANUAL

IMPORTANT

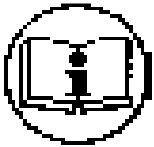


The tool delivered with this manual may be modified for specific needs.

In that case, please give us the tool code number written on our shipping note or the approximate tool delivery date when you place an order for a new similar tool or for spare parts.

In that way, you will be sure to get the required tool and/or spare part.

WARNING



This information has to be kept in a location known by all users.



Each operator has to read carefully this manual before installing, using, and mending the product.

Be sure that the operator has understood using recommendations and the meaning of signs put on the product.

Most accidents could be avoided respecting this Manual Instructions. As a matter of fact, they were created according to European laws and norms regarding products.

In each case, please respect and follow safety national norms. Do not take off nor damage the stickers or advise put on the product and above all the details imposed by the law.

1. Cable connection between Hybrid controller SDC-24 and PC

1-1. Cable connection



go on http://www.doga.fr/download2/control_tools_en.php to download the following files :

- usb driver CP210
- latest firmware version (depending on the controller type, FND or LDC display)
- software for firmware upgrade (SDflash)

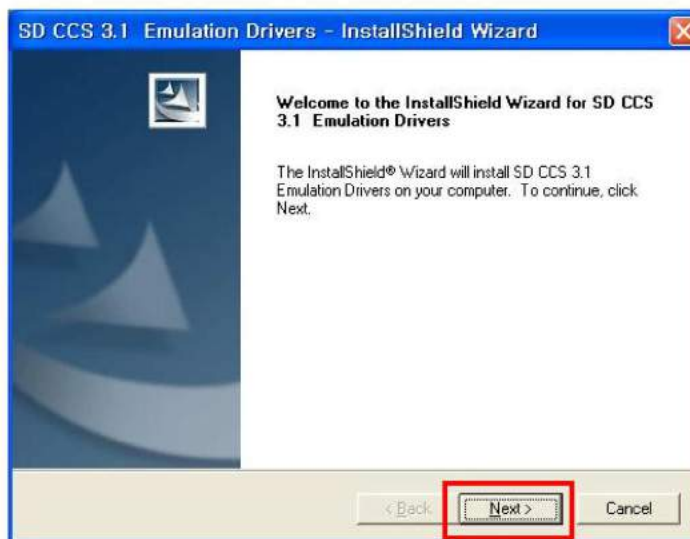
2. Emulation driver Software Install (Same software for Hybrid controller)

2-1. CCS31x\setupCCSPlatinum_v30118.exe install

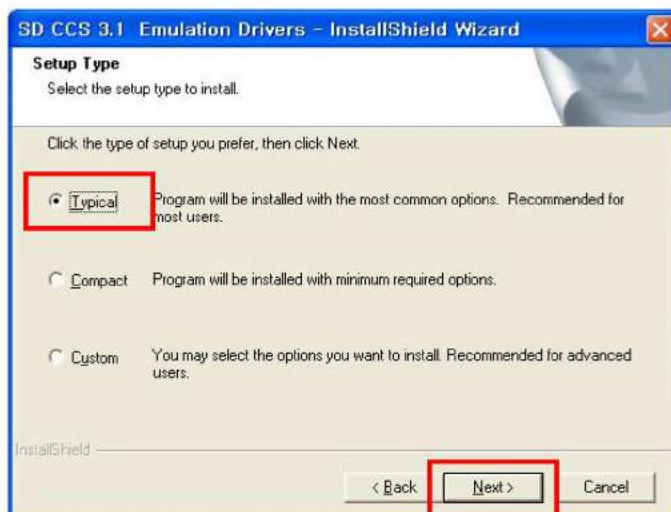
1) Install by double click the attached file CCS31x\setupCCSPlatinum_v30118.exe



2) Click < Next >



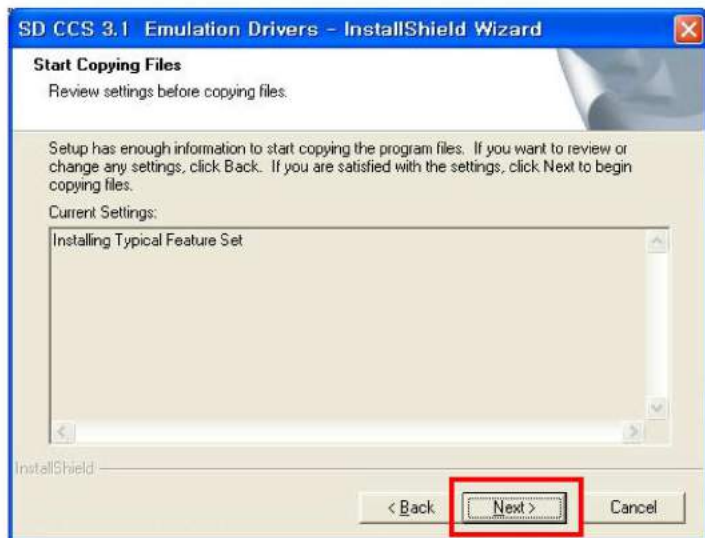
3) Choose < Typical > and click < Next >



4) Click < Next >



5) Click < Next >

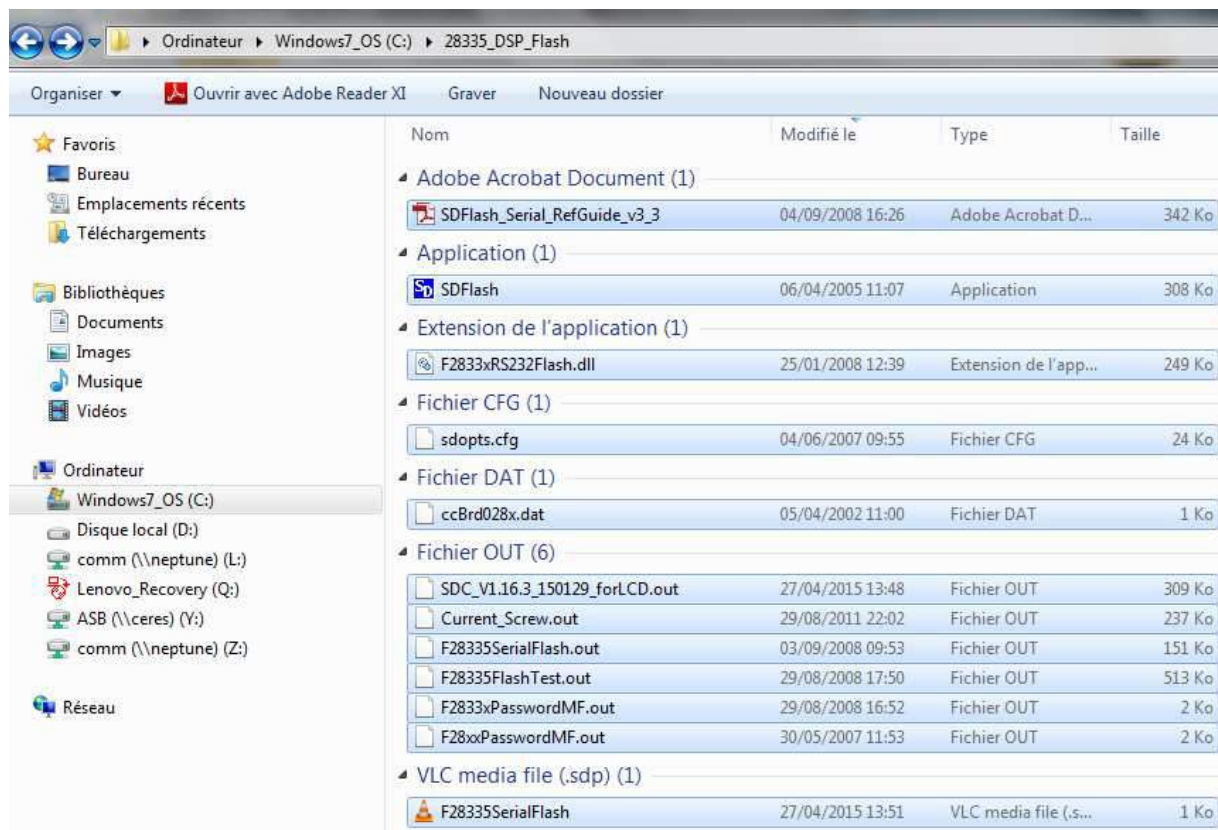
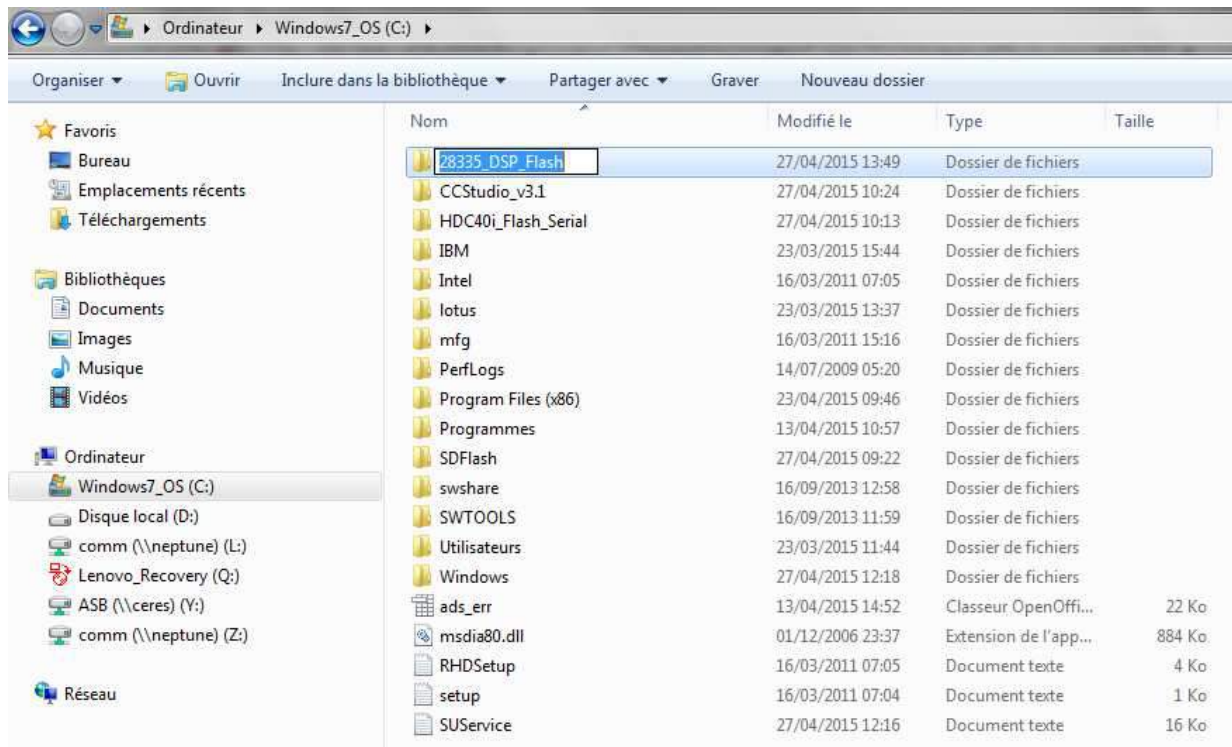


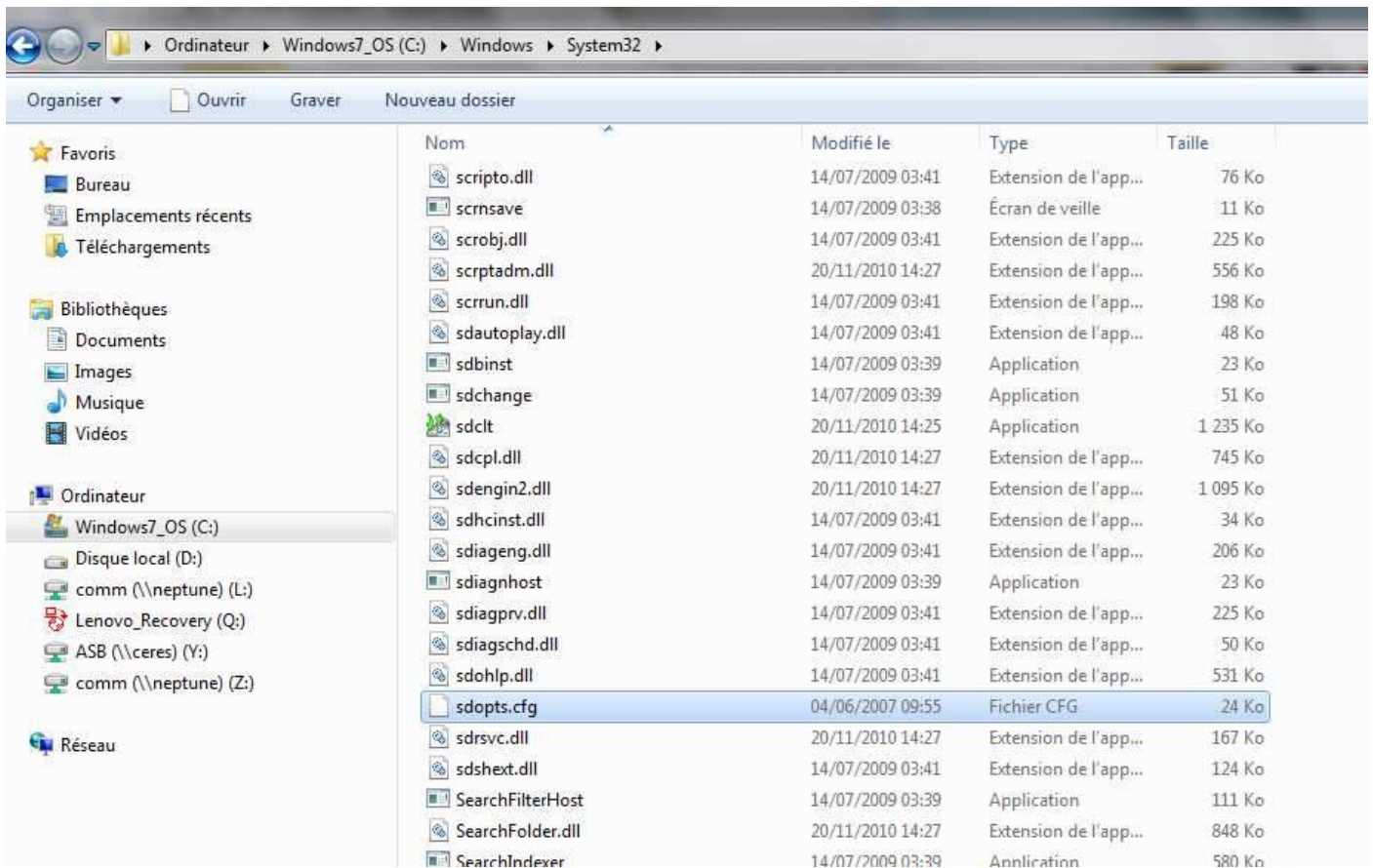
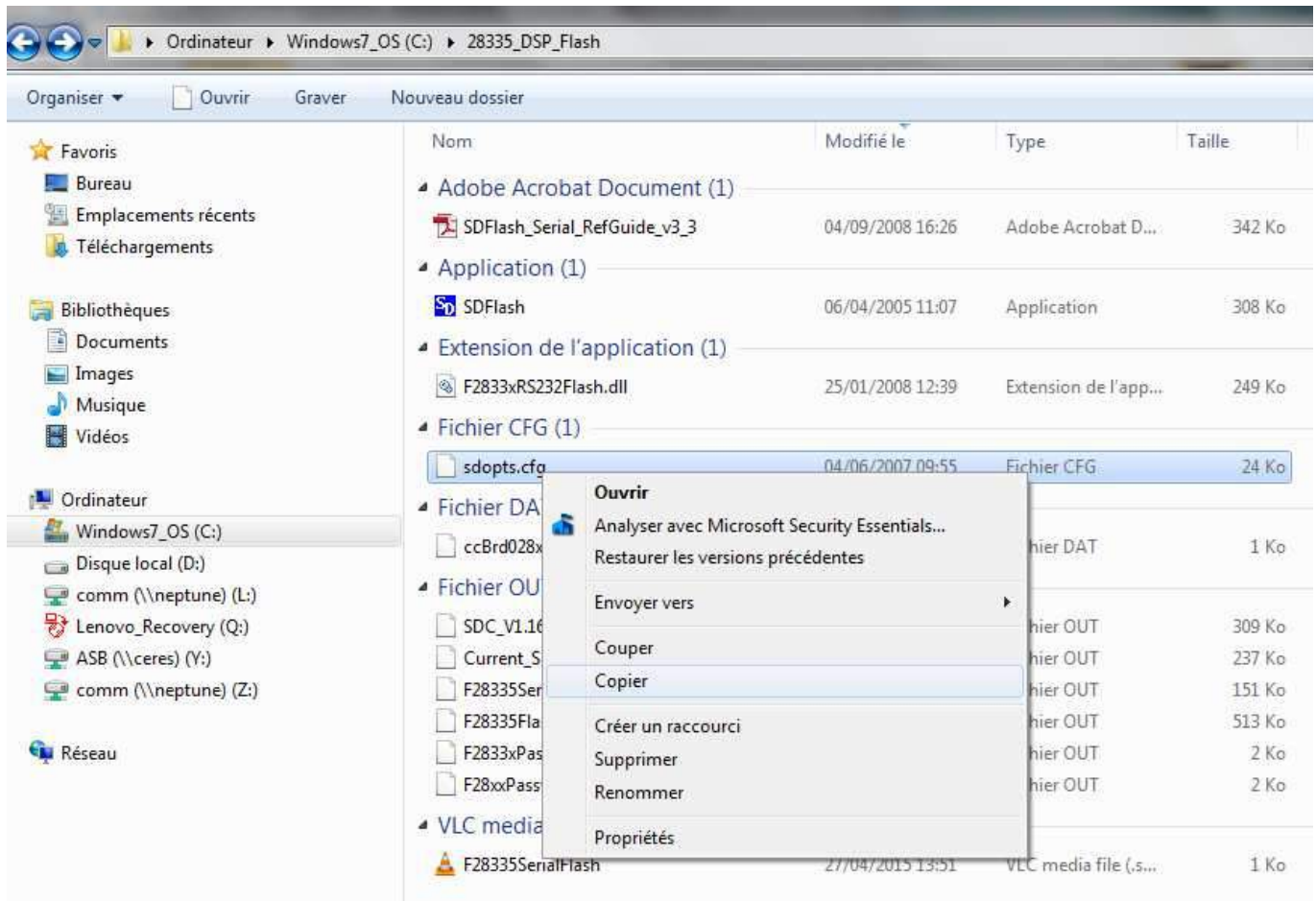
6) Click < Finish >



2-2. Copy of SD Flash boot loading software

- 1) Unzip "SDC_upgrade" archive
- 2) Copy/paste the "28335_DSP_Flash" file directly on your c:\driver
- 3) Copy the file "sdopts.cfg" in the above folder to the folder c:\Windows\System32 of the windows operating system file.





3. Firmware Upgrade of SDC-24

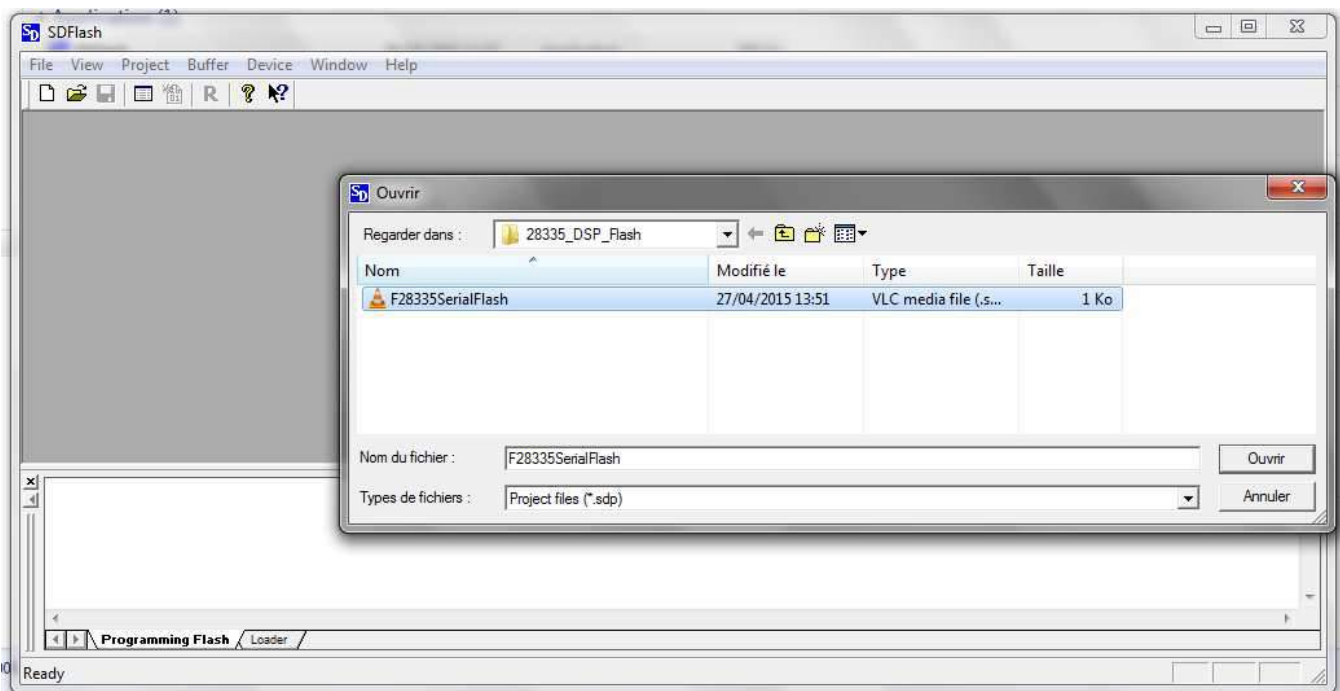
3-1. Preperation for upgrade

- 1) **Turn the power OFF** of controller
- 2) **Select mode switch to "Upgrade"** on the back
- 2) **Connect** SDC-24 controller to the PC by **USB Cable**
- 3) **Turn the power ON** of controller

- The controller will **not** be booted. Because the system is **controlled** by PC.
There will be **no display** on FND display.

3-2. Upgrade of firmware

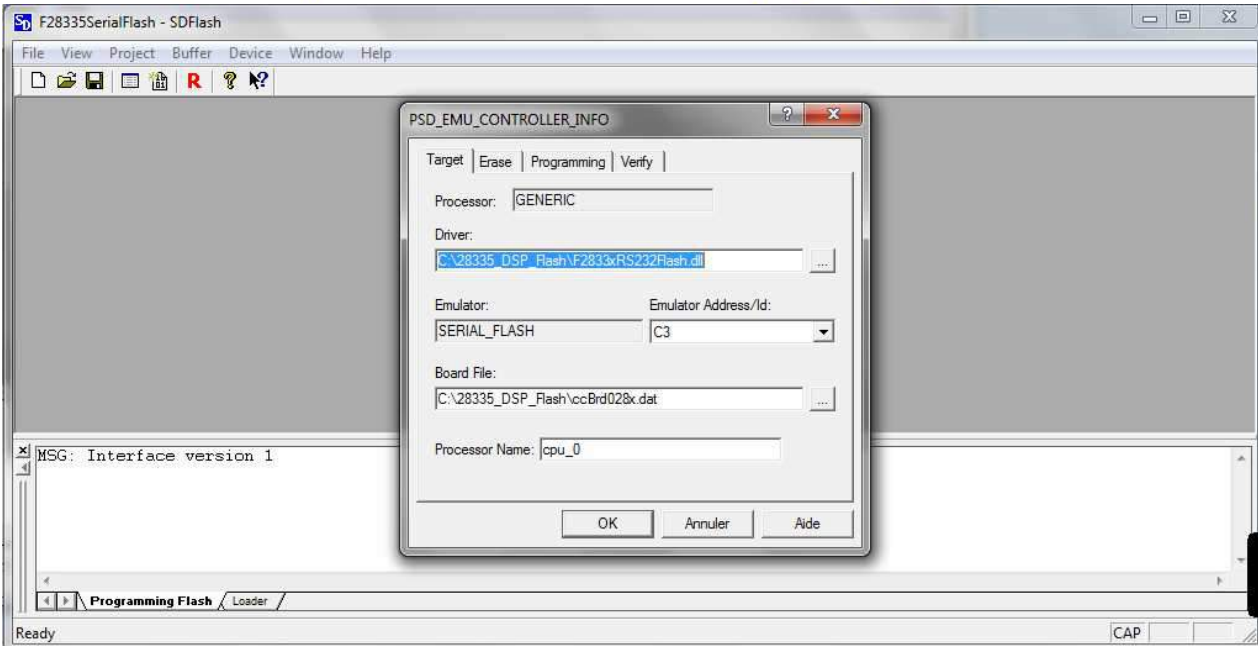
- 1) Open the "SDFlash.exe" file by double click in the folder of **C:\ 28335_DSP_Flash**
- 2) File→ Open Project→ **open the file " F28335SerialFlash.sdp " in the folder C:\ 28335_DSP_Flash**



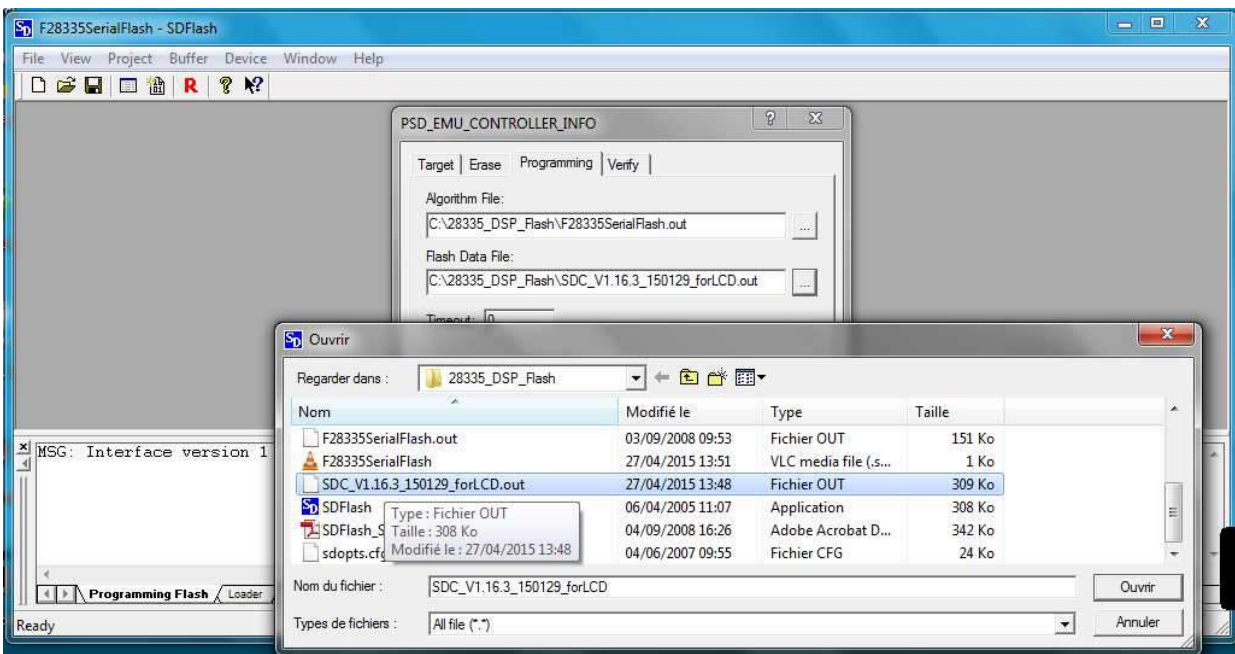
3.1) Project → Settings ... → **Target** tab

Check the communication port of the computer (=Emulator) and choose the right COM port and click OK

(COM port is supposed to be selected automatically by the program)

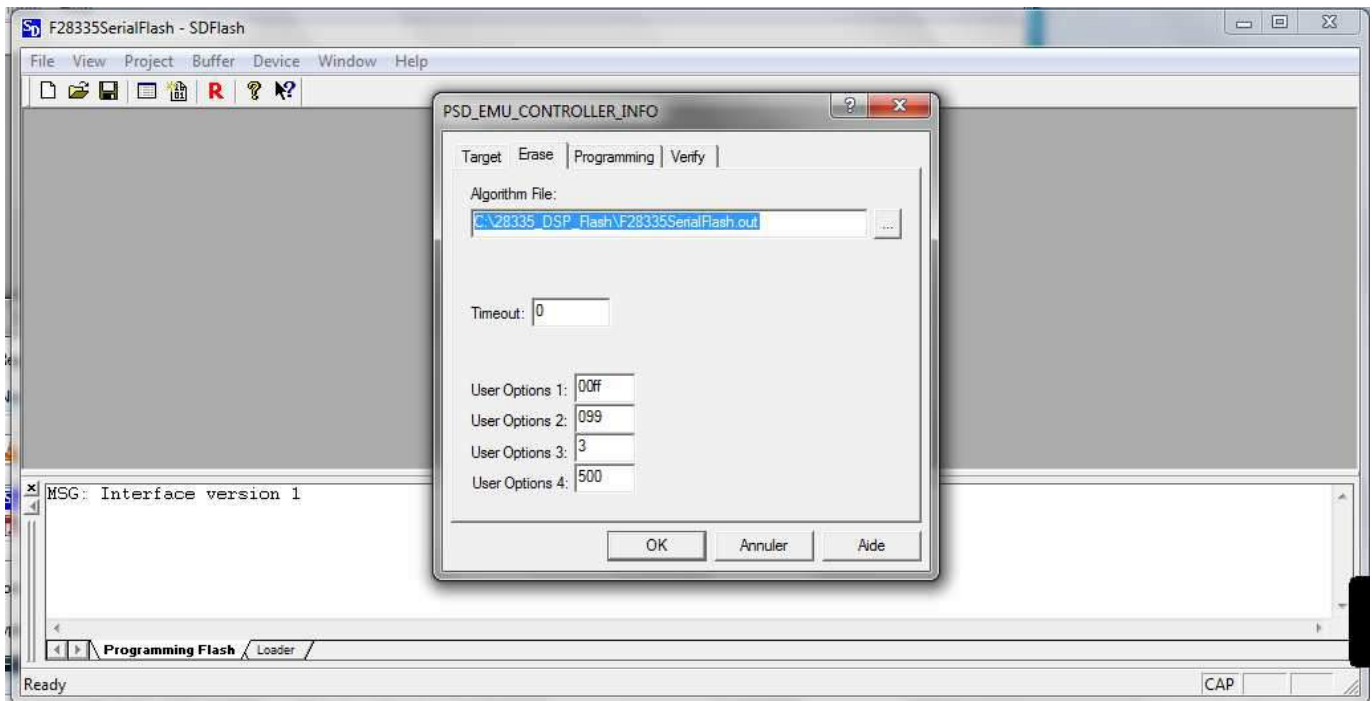
3.2) Project → Settings ... → **Programing** tab

Click the Programming tab and choose the latest firmware file which will be upgraded to the controller.

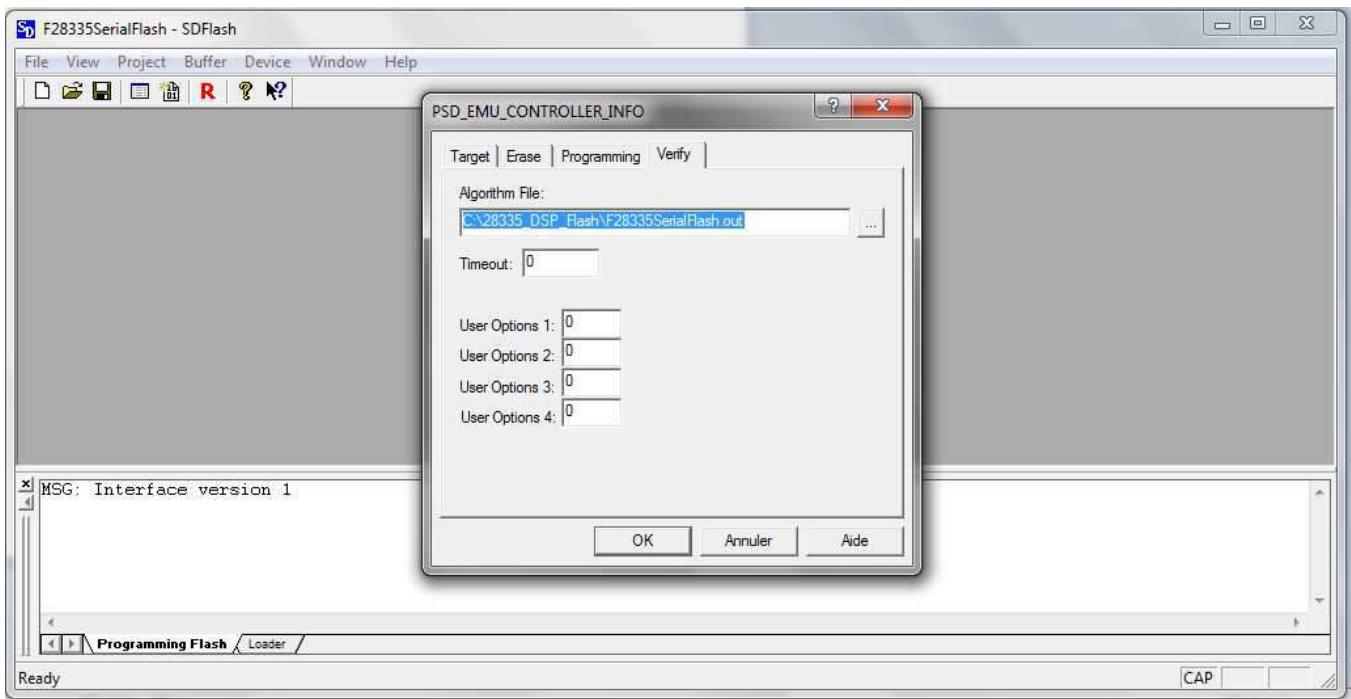


3.3) Project → Settings ... → **Erase** tab

Just check the setting is same as the shown on the picture

3.4) Project → Settings ... → **Verify** tab

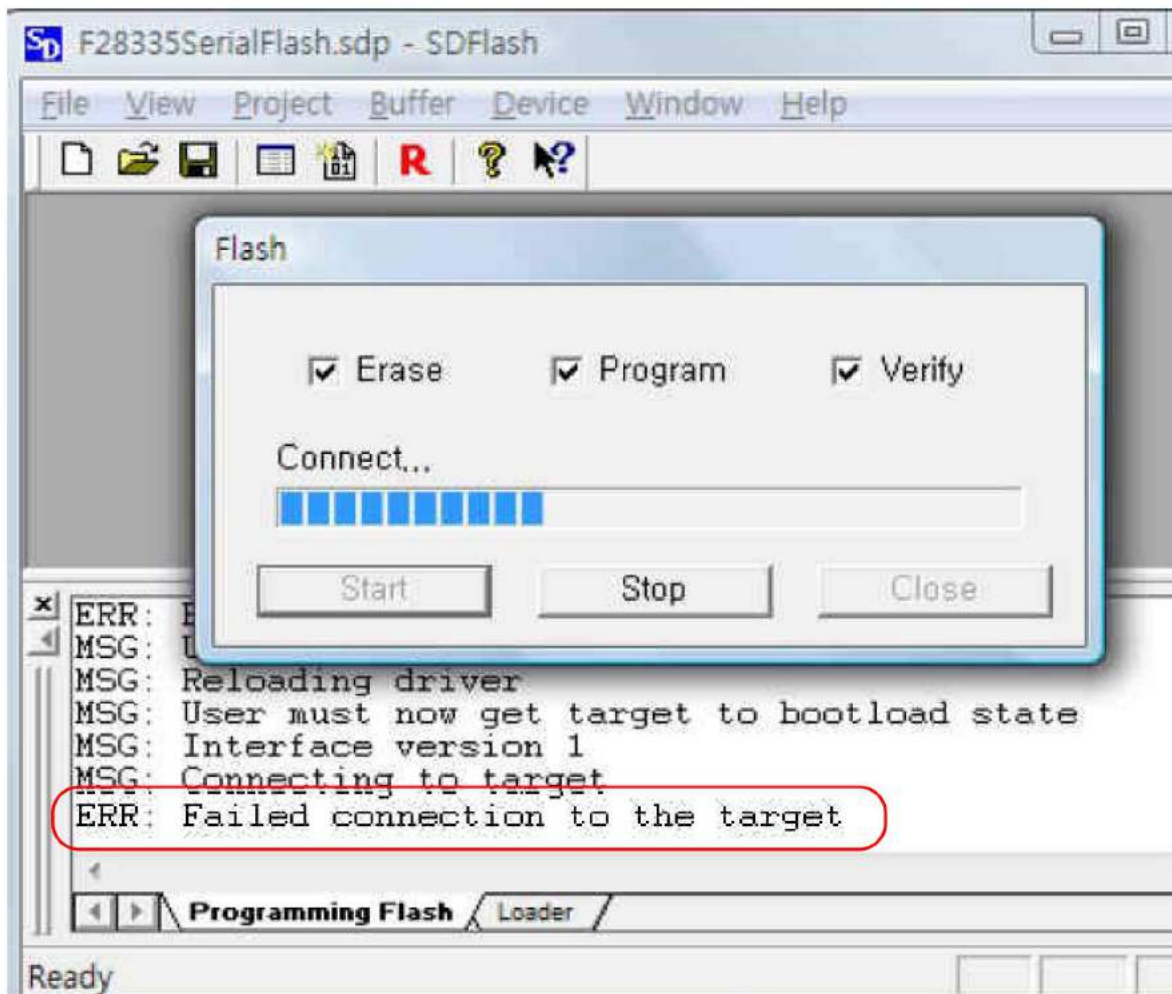
Just check the setting is same as the shown on the picture



Watch and check the information on the dialog box.

If you see " Failed connection to the target " on the dialog box,
please retry the process from cable connection

Depend on the system, it can take over 5 minutes



The dialog box shows the information about the following process ;

- ① Connecting to the target
- ② Erase the old firmware
- ③ Writing the new firmware
- ④ Verify the uploaded firmware
- ⑤ Finish

[Caution] Do not disconnect or power off during the Upgrade communication process.

- 4) Click " Close " button after the end of upgrade process on the dialog box.
And close all windows.
- 5) Click " Save " icon or Save project of the File menu for saving this process
- 6) Follow the same process for the other controller



8, avenue Gutenberg - CS 50510
78317 Maurepas Cedex - France
Tél. : +33 (0)1 30 66 41 48 • Fax : +33 (0)1 30 66 41 49

export@doga.fr



Nous travaillons constamment à l'amélioration de nos produits. De ce fait, les dimensions et indications portées dans cette brochure peuvent parfois ne pas correspondre aux dernières exécutions. De convention expresse, nos ventes sont faites sous bénéfice de réserve de propriété (les dispositions de la loi du 12/5/80 trouvent donc toute leur application).

Doc. 60264.05/15