



*DPC Touch
Firmware Upgrade*

A large, stylized, white 'S' shape with a subtle drop shadow, positioned vertically on the left side of the page. The 'S' is composed of two curved segments meeting at a central horizontal bar.

SERVICE MANUAL

IMPORTANT

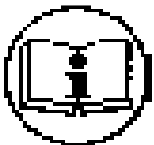


The tool delivered with this manual may have been modified for specific needs.

In that case, please give us the tool code number written on our shipping note or the approximate tool delivery date when you place an order for a new similar tool or for spare parts.

In that way, you will be sure to get the required tool and/or spare part.

WARNING



This information has to be kept in a location know by all users.



Each operator has to read carefully this manual before installing, using, and mending the product.

Be sure that the operator has understood using recommendations and the meaning of signs put on the product.

Most accidents could be avoided respecting this Manual Instructions. As a matter of fact, they were created according to European laws and norms regarding products.

In each case, please respect and follow safety national norms. Do not take off nor damage the stickers or advise put on the product and above all the details imposed by the law.

Hardware and software required for upgrade:

1. PC with USB port operated by Windows OS (XP, Vista, 7, 8, 10)



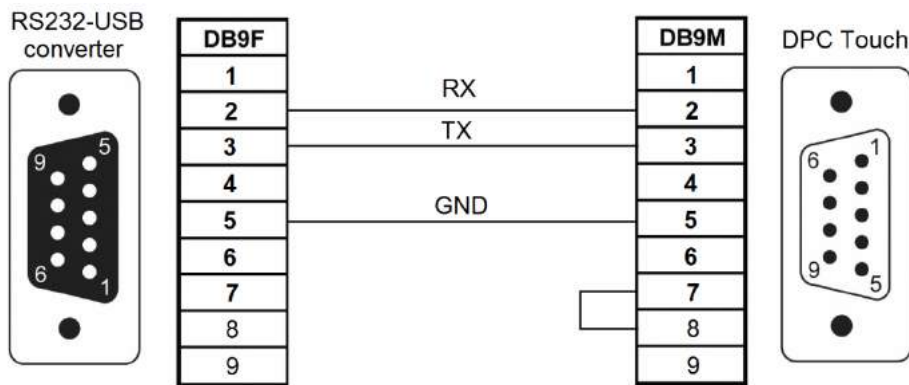
2. RS232-USB converter

(recommended with FTDI chip: <http://www.ftdichip.com/products/cables/usbrs232.htm>)



3. Special cable

(DB9 male DB9 female) with a shunt between pins 7 and 8 (on the male side)



NOTE: only indicated pins have to be wired. The shunt has to be made only on the male side.

4. Flash Loader Demonstrator GUI v.2.8 (<http://www.st.com/web/en/catalog/tools/PF257525>)



5. DPC Touch firmware file in .bin format



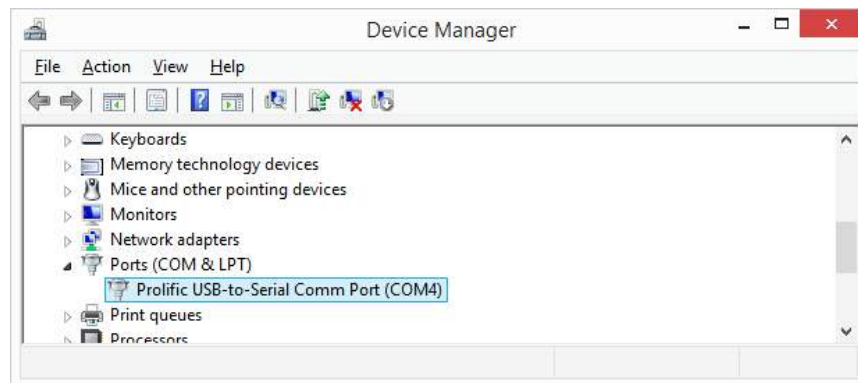
DPC Touch
firmware
v.0.2.8.bin

6. Standard content of the SD card of DPC Touch corresponding to the firmware version

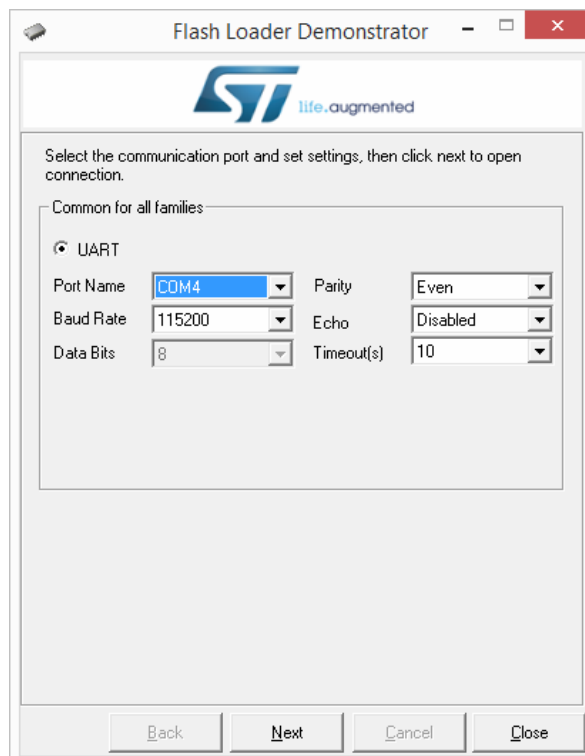


Procedure:

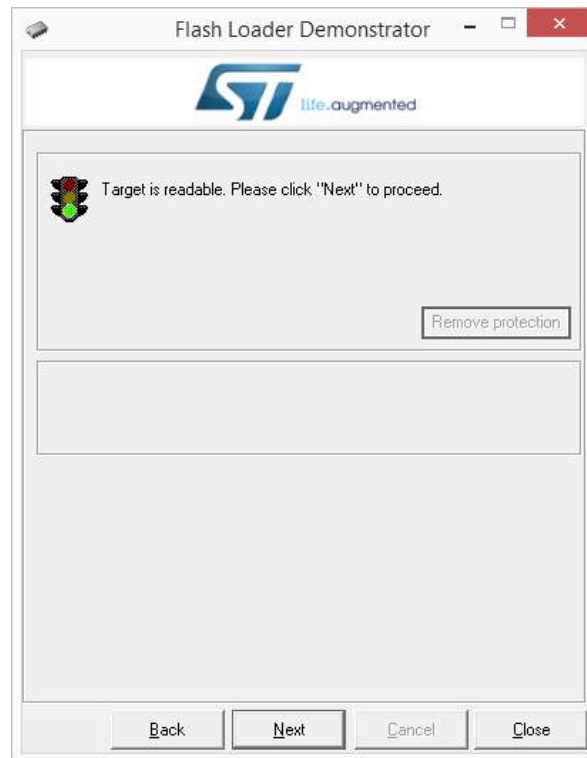
1. Download and install Flash Loader Demonstrator software.
<http://www.st.com/web/en/catalog/tools/PF257525>
2. Connect DPC Touch to USB port of your PC through RS232-USB converter and the special cable with a shunt.
3. Power on DPC Touch controller. Empty boot screen will appear. If the controller is loaded in normal operating mode, then the shunt in the special cable is not made correctly. Check wiring.
4. In Device Manager, check the COM port number assigned for RS232-USB converter.



5. Start Flash Loader Demonstrator GUI.
6. Select corresponding COM Port name and Baud Rate of 38400, 57600 or 115200. Leave all other settings by default.

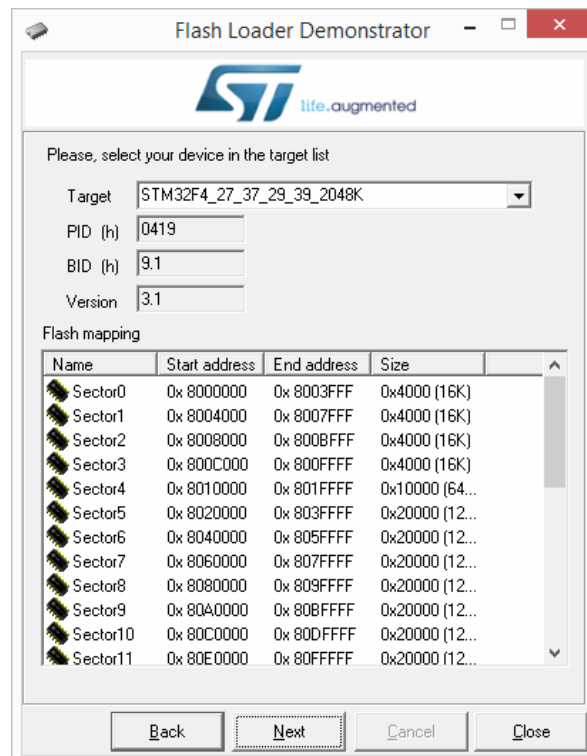


- Click Next. If connection is established the green light will be shown.

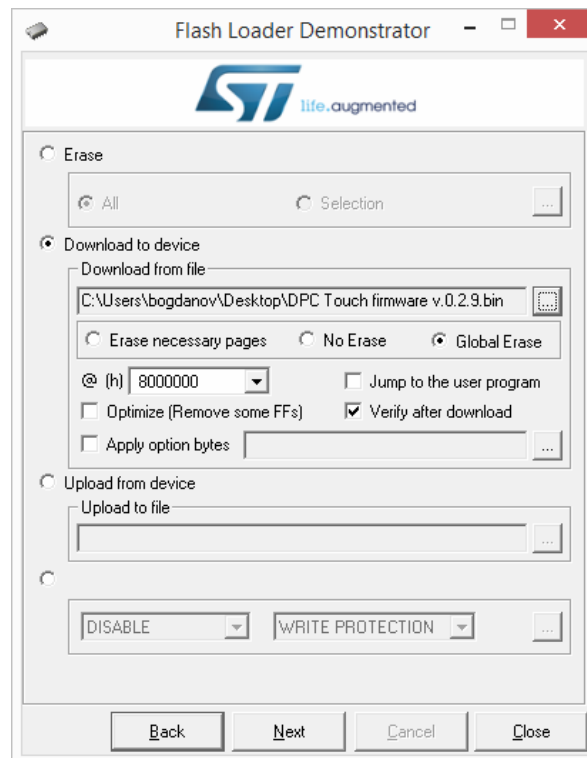


NOTE: if connection is not established, check wiring of the special cable. If wiring is correct, change RS232-USB converter to the recommended type (see above).

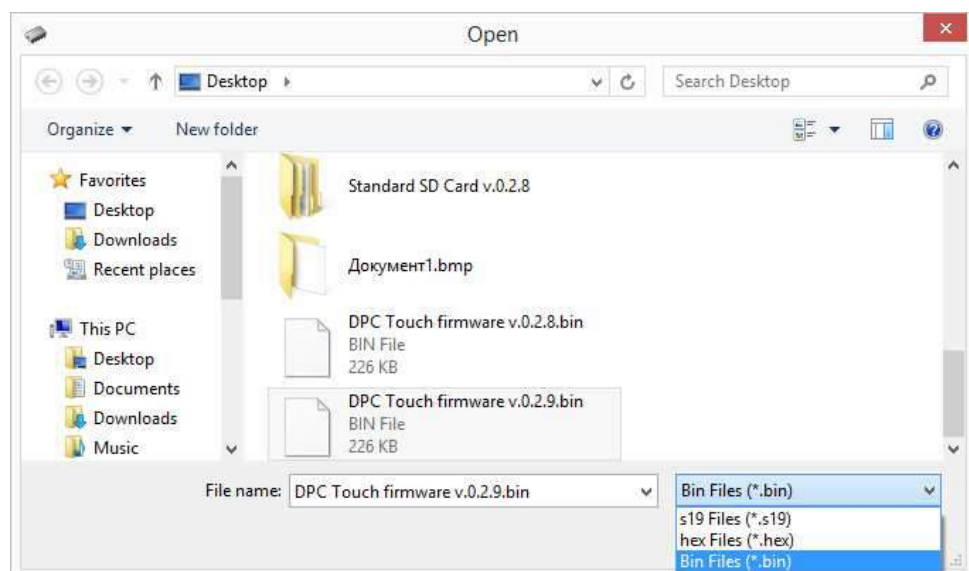
- Click Next. If microchip is recognized, its model will appear in the *Target* field.



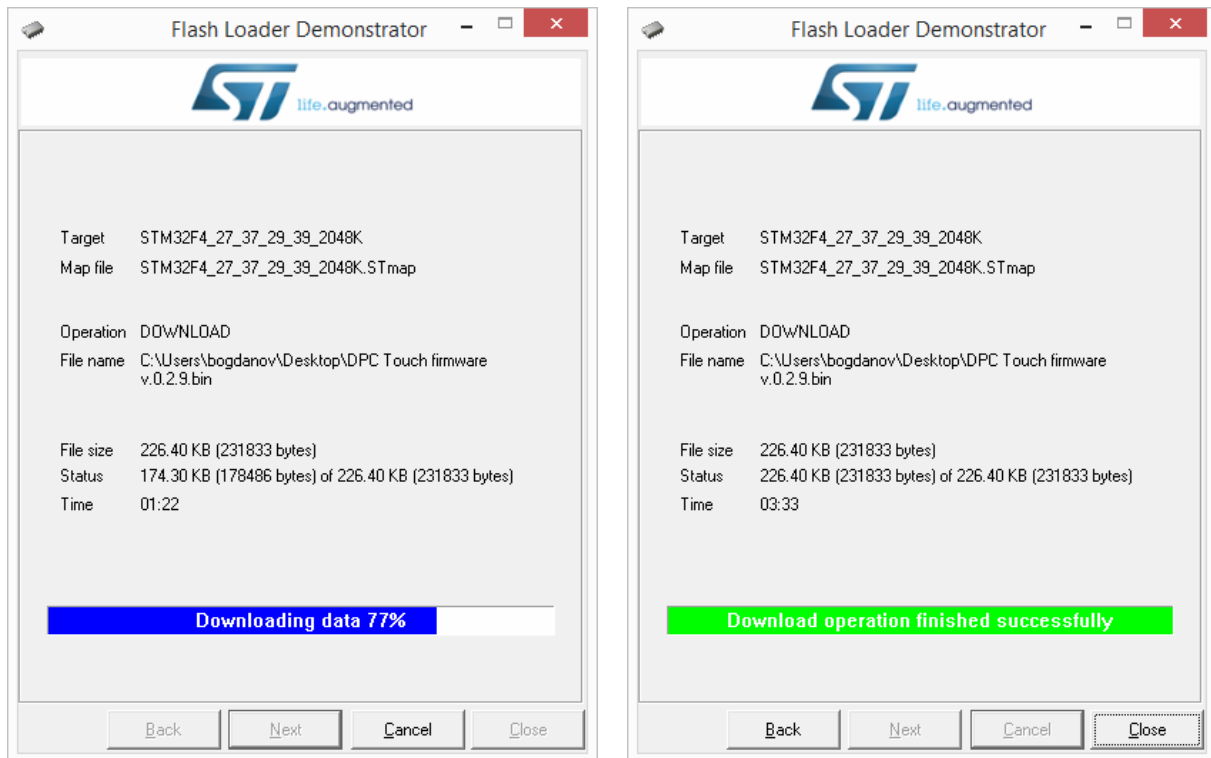
9. Click Next. Select *Download to device*, *Global Erase* and *Verify after download*. Leave all other settings by default.



10. Select DPC Touch firmware file (*Download from file ...*) from your hard drive.
NOTE: select file type as .bin



- Click Next. Wait several minutes until upgrade is completed.



- Click Close button and power off DPC Touch controller and disconnect the upgrade cable from the serial port of DPC Touch.
- By using your PC replace the content of the SD card by corresponding standard content. Erase the content of the existing card and upload new content.
NOTE: save user content (programs and message images) on your PC before formatting the SD card. Upload them back on the SD card if necessary.



8, avenue Gutenberg - CS 50510
78317 Maurepas Cedex - France
Tél. : +33 (0)1 30 66 41 48 • Fax : +33 (0)1 30 66 41 49
export@dogaf.fr



Nous travaillons constamment à l'amélioration de nos produits. De ce fait, les dimensions et indications portées dans cette brochure peuvent parfois ne pas correspondre aux dernières exécutions. De convention expresse, nos ventes sont faites sous bénéfice de réserve de propriété (les dispositions de la loi du 12/5/80 trouvent donc toute leur application).